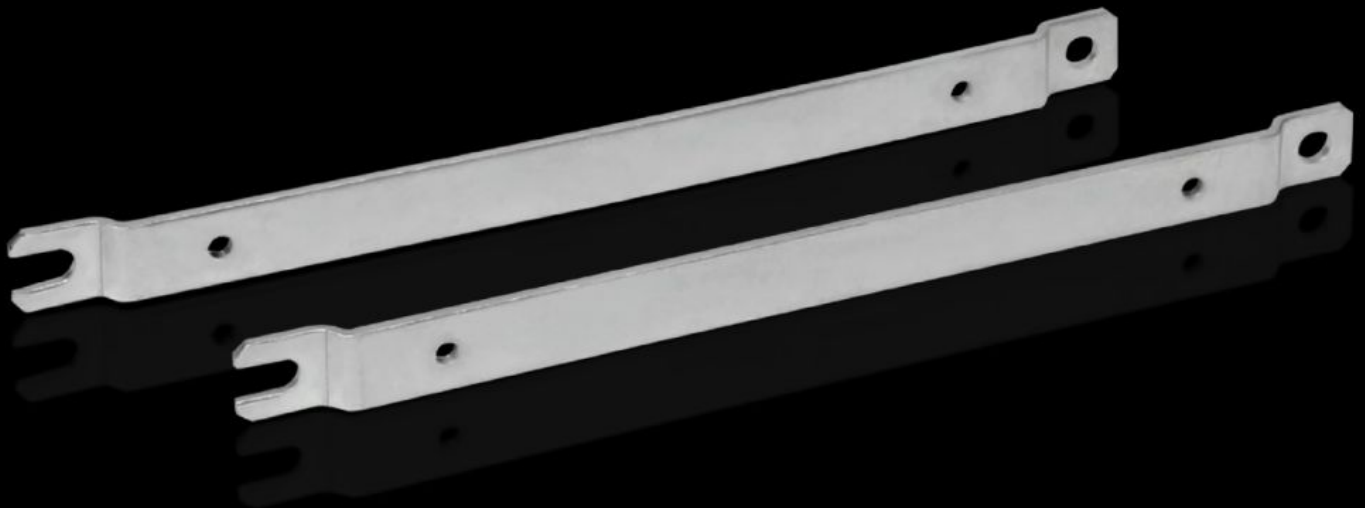


**Rittal – The System.**

Faster – better – everywhere.



**GA 9121.230**

**Wall mounting bracket**

State: 27/9/2024 (Source: [rittal.com/in-en](http://rittal.com/in-en))

ENCLOSURES

POWER DISTRIBUTION

CLIMATE CONTROL

IT INFRASTRUCTURE

SOFTWARE & SERVICES

FRIEDHELM LOH GROUP



# GA 9121.230 - Wall mounting bracket for GA

For external mounting on surfaces – no need to dismantle the cover if pre-assembled.



## Features

Model No.	GA 9121.230
Product description	For external mounting on surfaces – no need to remove the cover if pre-assembled.
Material	Sheet steel
Surface finish	Zinc-plated
To fit	Enclosure type: GA Height: $\geq 230$ mm
Packs of	2 pc(s).
Weight/pack	0.288 kg
Net weight	0.26
Gross weight	0.287
PCF/PU (Cradle-to-Gate)	1.1 kg CO2 eq (Cat B)
Note on the PCF class	Category B: PCF value (cradle-to-gate) approximated based on product weight and self-declared
Customs tariff number	83024900
EAN	4028177154520
ETIM 7.0	EC002625
ECLASS 8.0	27189234