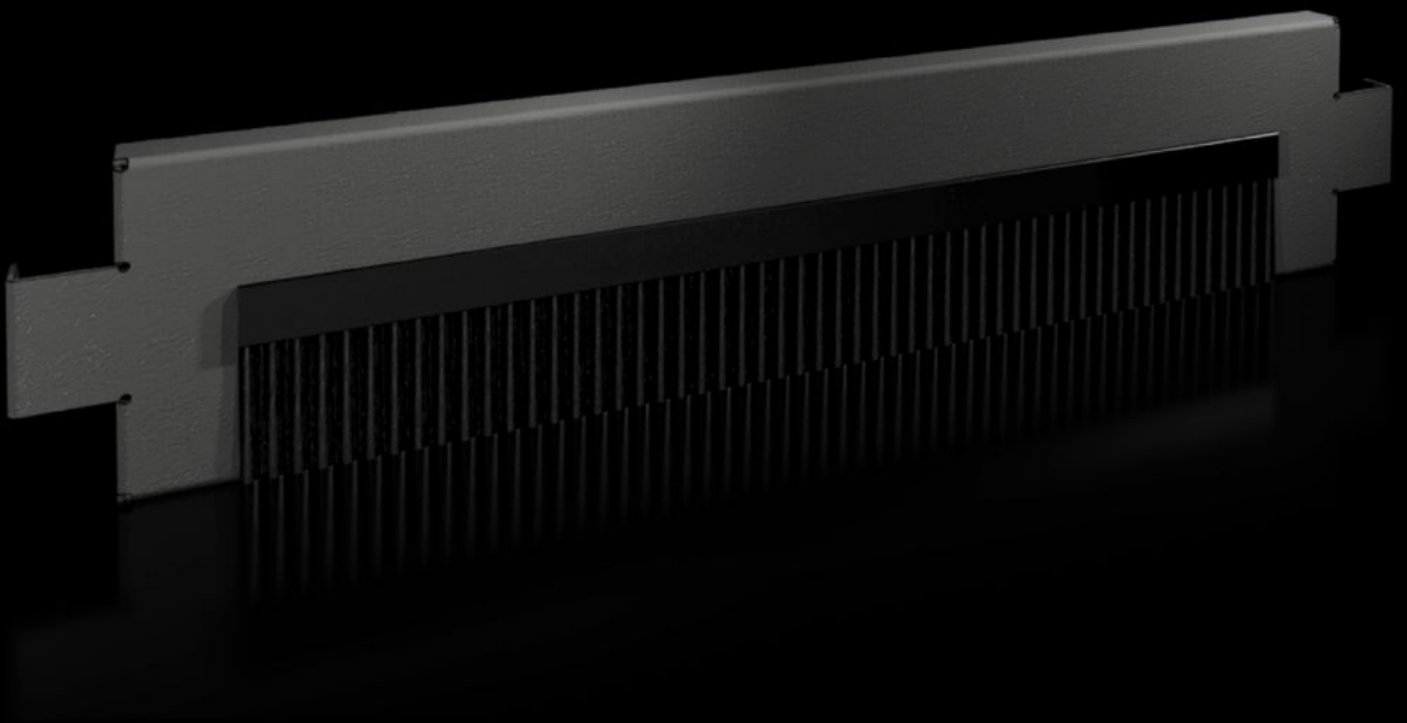


Rittal – The System.

Faster – better – everywhere.



VX 8620.092

Base/plinth trim panels with brush strip

State: 19/10/2024 (Source: rittal.com/in-en)

ENCLOSURES

POWER DISTRIBUTION

CLIMATE CONTROL

IT INFRASTRUCTURE

SOFTWARE & SERVICES

FRIEDHELM LOH GROUP



VX 8620.092 - Base/plinth trim panels with brush strip for base/plinth system VX

The 100 mm high base/plinth trim panels are used in the width or depth for cable entry into the base/plinth. The trim panels may also be used in a 200 mm high base/plinth and combined with other 100 mm high trim panels.

Features

Model No.	VX 8620.092
Product description	For cable entry in the base/plinth. With a base/plinth height of 200 mm, one or two trim panels with brush strips may optionally be used. Thanks to the complete symmetry of the base/plinth system VX, the trim panels with brush strip may either be fitted at the front, rear or side on the base/plinth corner piece.
Material	Base/plinth trims: Sheet steel Brush strip: Plastic, self-extinguishing
Colour	RAL 9005
Supply includes	Assembly parts
Dimensions	Height: 100 mm
To fit	Enclosure type: VX TX CableNet To fit width/depth: 600 mm
Type rating to UL 50E	Type 1, 12
Weight/pack	1.3 kg
Packs of	2 pc(s).
Net weight	1.1
Gross weight	1.3
Customs tariff number	94039910
EAN	4028177922457
E-Number Sweden	E3465075

Features

ETIM 7.0	EC000721
----------	----------

ECLASS 8.0	27182003
------------	----------

Approvals

Approvals	UL + C-UL - FTTA
-----------	------------------