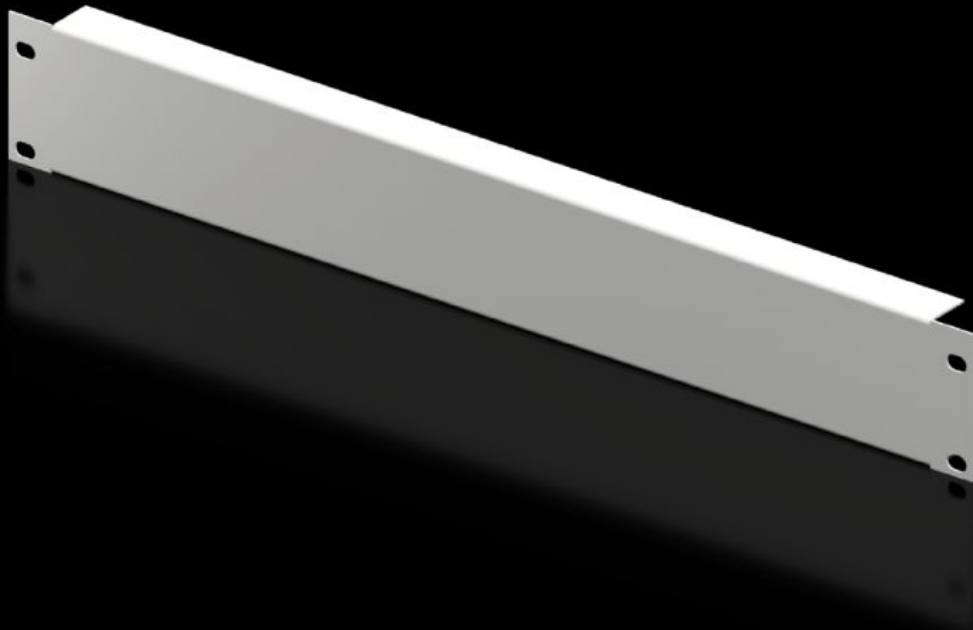


Rittal – The System.

Faster – better – everywhere.



DK 7157.035

Blanking panel, 482.6 mm (19")

State: 19/10/2024 (Source: rittal.com/in-en)

ENCLOSURES

POWER DISTRIBUTION

CLIMATE CONTROL

IT INFRASTRUCTURE

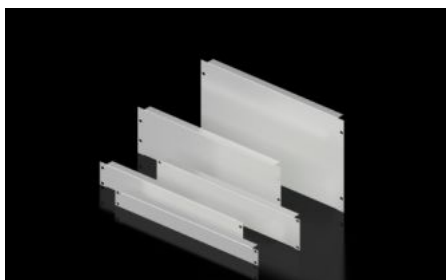
SOFTWARE & SERVICES

FRIEDHELM LOH GROUP



DK 7157.035 - Blanking panel, 482.6 mm (19")

As an extension cover or for population as required.



Features

Model No.	DK 7157.035
Product description	As an extension cover or for population as required.
Material	Sheet steel
Colour	RAL 7035
Build-up height	66 mm
Dimensions	Width: 482.6 mm
Units	1.5 U
Packs of	2 pc(s).
Weight/pack	1.022 kg
Net weight	1
Gross weight	1.022
PCF/PU (Cradle-to-Gate)	3.9 kg CO2 eq (Cat B)
Note on the PCF class	Category B: PCF value (cradle-to-gate) approximated based on product weight and self-declared
Customs tariff number	94039910
EAN	4028177165786
ETIM 7.0	EC000456
ECLASS 8.0	27189217

Tender text

482.6 mm (19") blanking panel, 1.5 U

Used as an extension cover or for individual population.

Installation height: 66 mm, 1.5 U

Version: Sheet steel

Paint finish: RAL 7035