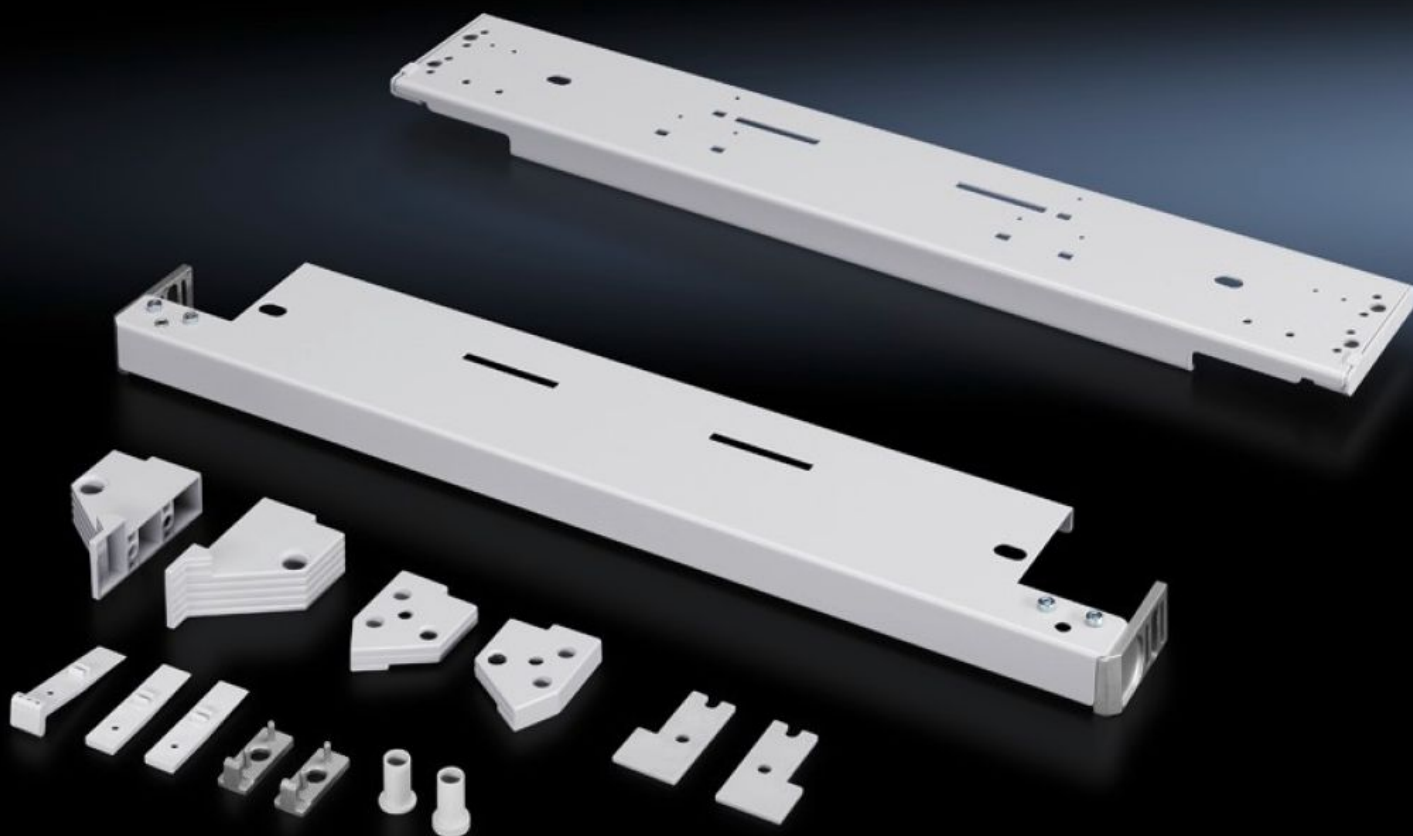


Rittal – The System.

Faster – better – everywhere.



SR 1997.235 Installation kit

State: 19/10/2024 (Source: rittal.com/in-en)

ENCLOSURES

POWER DISTRIBUTION

CLIMATE CONTROL

IT INFRASTRUCTURE

SOFTWARE & SERVICES

FRIEDHELM LOH GROUP



SR 1997.235 - Installation kit for swing frame, large, with trim panel

Features

Model No.	SR 1997.235
Material	Sheet steel
Colour	RAL 7035
Supply includes	Assembly parts for mounting on the enclosure
Opening angle	180°
Installation options	On swing frame with 482.6 mm (19") level, side On swing frame with 482.6 mm (19") level, central
Load capacity (static)	1,200 N
Note to permissible static load max.	Maximum load 800 N with the TS mounting plate slide rail dismantled.
To fit	Enclosure type: TS SE Width: = 800 mm
To fit enclosure type	TS SE
Packs of	1 pc(s).
Weight/pack	6.26 kg
Net weight	5.804
Gross weight	6.109
Customs tariff number	83024900
EAN	4028177164949
ETIM 8	EC002625
ETIM 7.0	EC002625
ECLASS 8.0	27189234

Tender text

Installation kit for swing frames in network enclosures

With the installation kit swing frames can be installed in a 800 mm wide network enclosure. The installation kit is attached to the 25 mm DIN pitch pattern of holes and is depth-adjustable. If the swing frame is partially installed in the network enclosure, it is also height-adjustable in the 25 mm pitch pattern of holes. The opening angle of the swing frame is 180°

Material: sheet steel

Colour: RAL 7035