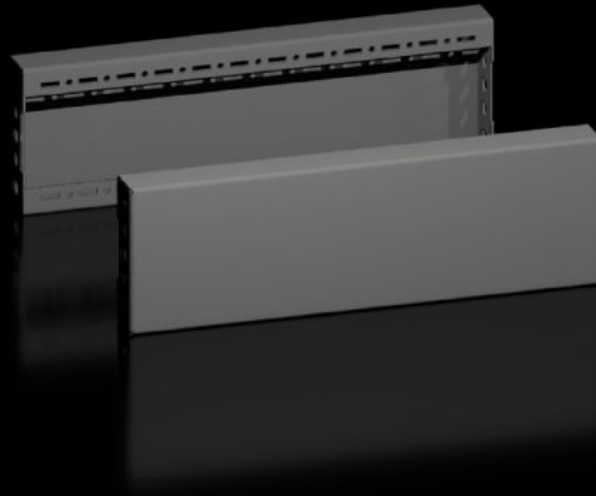


Rittal – The System.

Faster – better – everywhere.



VX 8660.032

Base/plinth trim panels, side

State: 13/07/2024 (Source: [rittal.com/ie-en](https://www.rittal.com/ie-en))

ENCLOSURES

POWER DISTRIBUTION

CLIMATE CONTROL

IT INFRASTRUCTURE

SOFTWARE & SERVICES

FRIEDHELM LOH GROUP



VX 8660.032 - Base/plinth trim panels, side for base/plinth system VX, sheet steel

To finish off a base/plinth unit at the sides and for additional stability or interior configuration of bayed base/plinths. One 200 mm high or two 100 mm high trim panels may optionally be fitted on 200 mm high base/plinths.

Features

Model No.	VX 8660.032
Design	Solid
Material	Sheet steel
Colour	RAL 9005
Supply includes	Assembly parts
Dimensions	Height: 100 mm
To fit	Enclosure type: VX VX IT VX SE TX CableNet TS TS IT TP PC IW CX Depth: = 500 mm
Type rating to UL 50E	Type 1 Type 12
Weight/pack	1.51 kg
Packs of	2 pc(s).
To fit	for base/plinth system VX, sheet steel
Customs tariff number	94039910
EAN	4028177978225

Features

ETIM 8	EC000721
ETIM 7.0	EC000721
ECLASS 8.0	27182003
