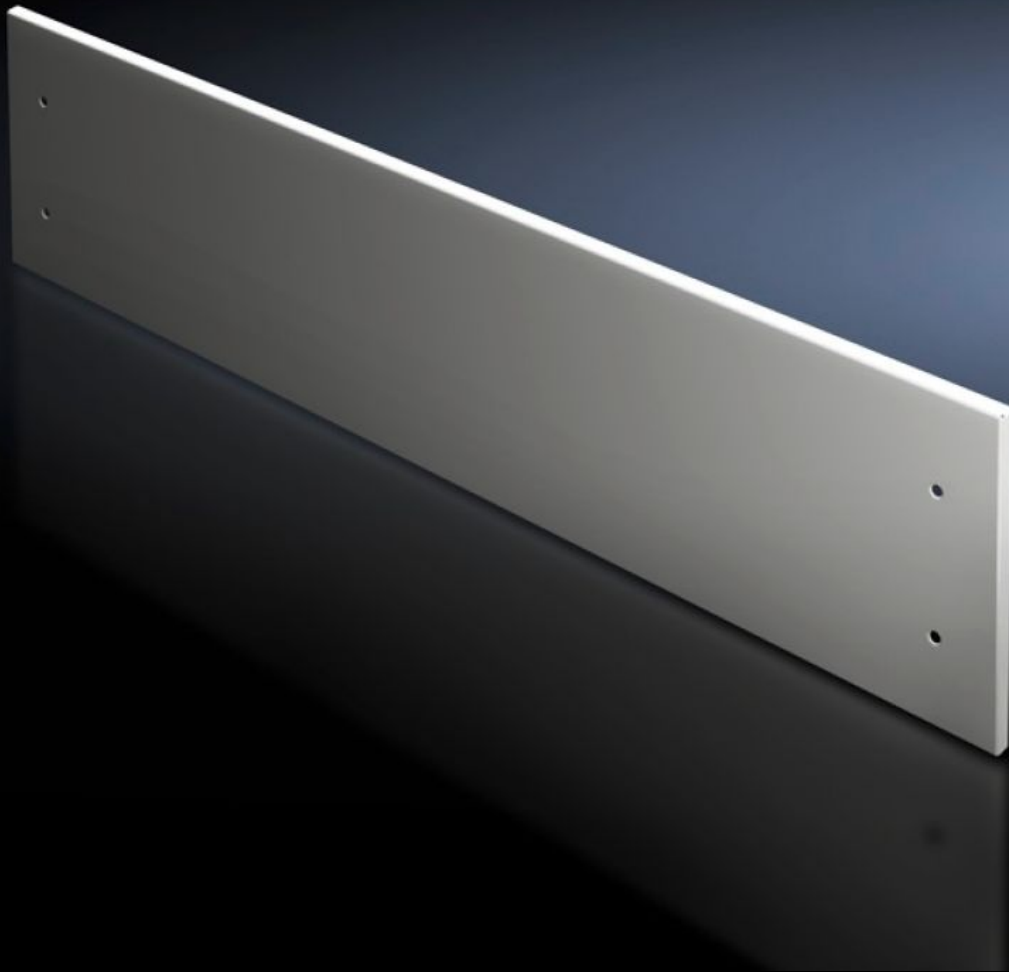


# Rittal – The System.

Faster – better – everywhere.



## SV 9682.328

## Front trim panel, top, solid

State: 19.10.2024. (Source: [rittal.com/hr-hr](https://www.rittal.com/hr-hr))

ENCLOSURES

POWER DISTRIBUTION

CLIMATE CONTROL

IT INFRASTRUCTURE

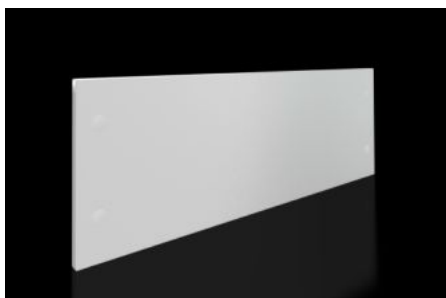
SOFTWARE & SERVICES

FRIEDHELM LOH GROUP



# SV 9682.328 - Front trim panel, top, solid for VX

To finish off at the top when using partial doors.



## Features

Model No.	SV 9682.328
Design	Solid
Product description	To finish off the modular front design at the top when using partial doors. The front trim panels may be removed from the outside by unscrewing. The cross member required for mounting is included with the supply of the mounted partial doors.
Material	Sheet steel, 1.5 mm
Surface finish	Textured paint
Colour	RAL 7035
Supply includes	Assembly parts
Dimensions	Height: 300 mm
To fit	Width: = 800 mm
Packs of	1 pc(s).
Weight/pack	4,08 kg
Net weight	3.68
Gross weight	4.08
PCF/PU (cradle-to-gate)	15.5 kg CO2 eq (Cat B)
Note on the PCF class	Category B: PCF value (cradle-to-gate) approximated based on product weight and self-declared

# Features

---

Customs tariff number	94039910
EAN	4028177929661
ETIM 7.0	EC000456
ECLASS 8.0	27142423

---

# Approvals

---

Approvals	DNV-GL Lloyds Register of Shipping UL + C-UL (listed) UL + C-UL - FTTA
Explanations	Declaration of conformity Declaration of conformity UK

---