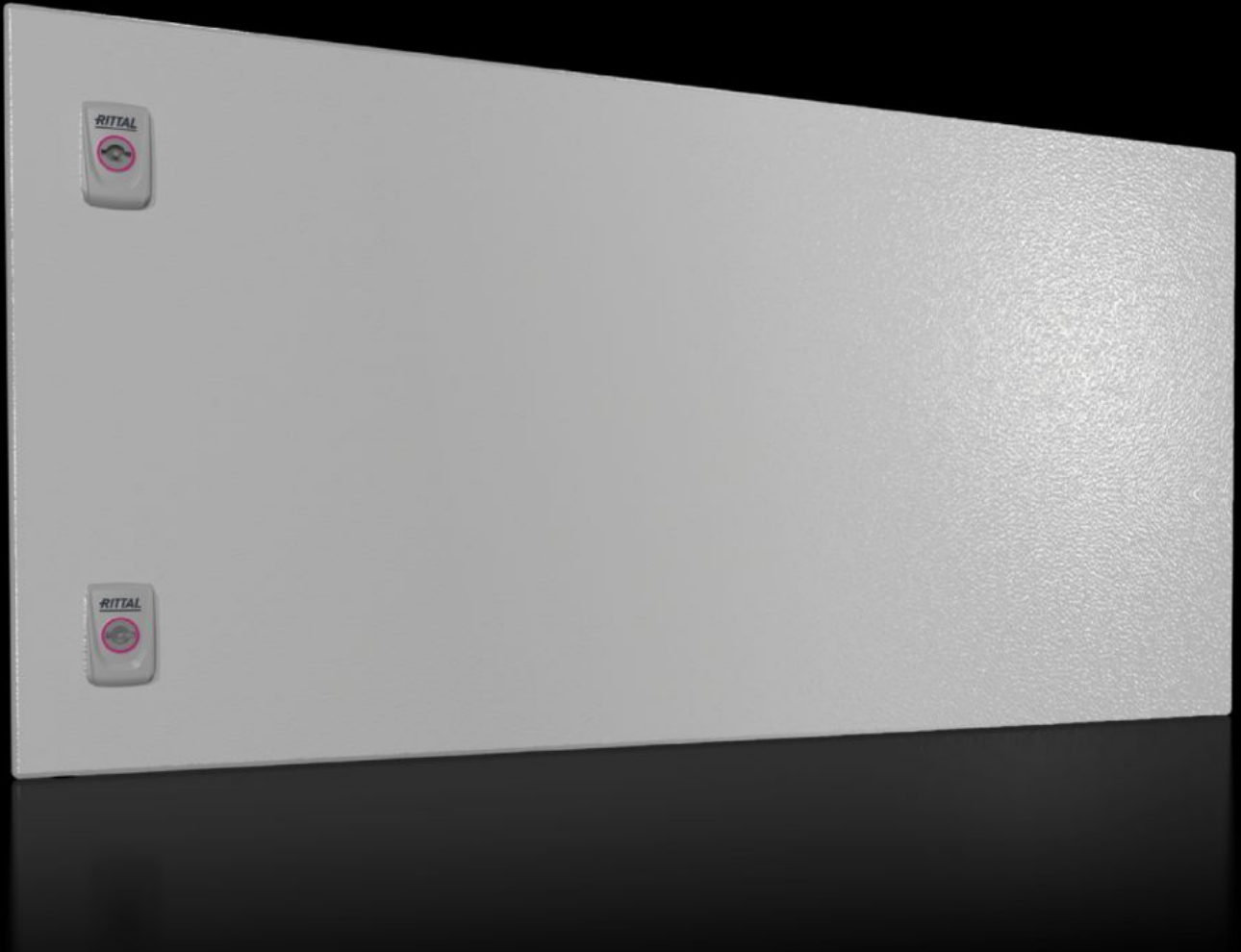


Rittal – The System.

Faster – better – everywhere.



SV 9682.184 Partial door

State: 27.09.2024. (Source: rittal.com/hr-hr)

ENCLOSURES

POWER DISTRIBUTION

CLIMATE CONTROL

IT INFRASTRUCTURE

SOFTWARE & SERVICES

FRIEDHELM LOH GROUP



SV 9682.184 - Partial door for VX

Door may be optionally hinged on the right or left.

Features

| | |
|-------------------------------------|---|
| Model No. | SV 9682.184 |
| Product description | Suitable for VX enclosures instead of a door or rear panel. The partial doors may be combined with one another as required. A trim panel is required at the top and bottom in each case. Door may be optionally hinged on the right or left. In the case of doors without viewing panel (height 600 – 1000 mm), monitor frame 2305.000 may be installed. Standard double-bit lock insert may be exchanged for lock inserts, type A. |
| Material | Sheet steel, 2 mm |
| Surface finish | Textured paint |
| Colour | RAL 7035 |
| Supply includes | Partial door Cross member Hinges Lock components Assembly parts |
| Note | Opening angle of partial doors max. 130° |
| Lock | Number of locks: 2 |
| Dimensions | Width: 800 mm Height: 400 mm |
| To fit | Width: = 800 mm |
| IP protection category to IEC 60529 | IP 54 |
| Packs of | 1 pc(s). |
| Weight/pack | 7,32 kg |
| Net weight | 6.8 |
| Gross weight | 7.56 |

Features

| | |
|-------------------------|---|
| PCF/PU (Cradle-to-Gate) | 27.9 kg CO2 eq (Cat B) |
| Note on the PCF class | Category B: PCF value (cradle-to-gate) approximated based on product weight and self-declared |
| Customs tariff number | 94039910 |
| EAN | 4028177929036 |
| ETIM 7.0 | EC000747 |
| ECLASS 8.0 | 27182204 |

Approvals

| | |
|--------------|---|
| Approvals | DNV-GL Lloyds Register of Shipping UL + C-UL (listed) UL + C-UL - FTTA |
| Explanations | Declaration of conformity Declaration of conformity UK |