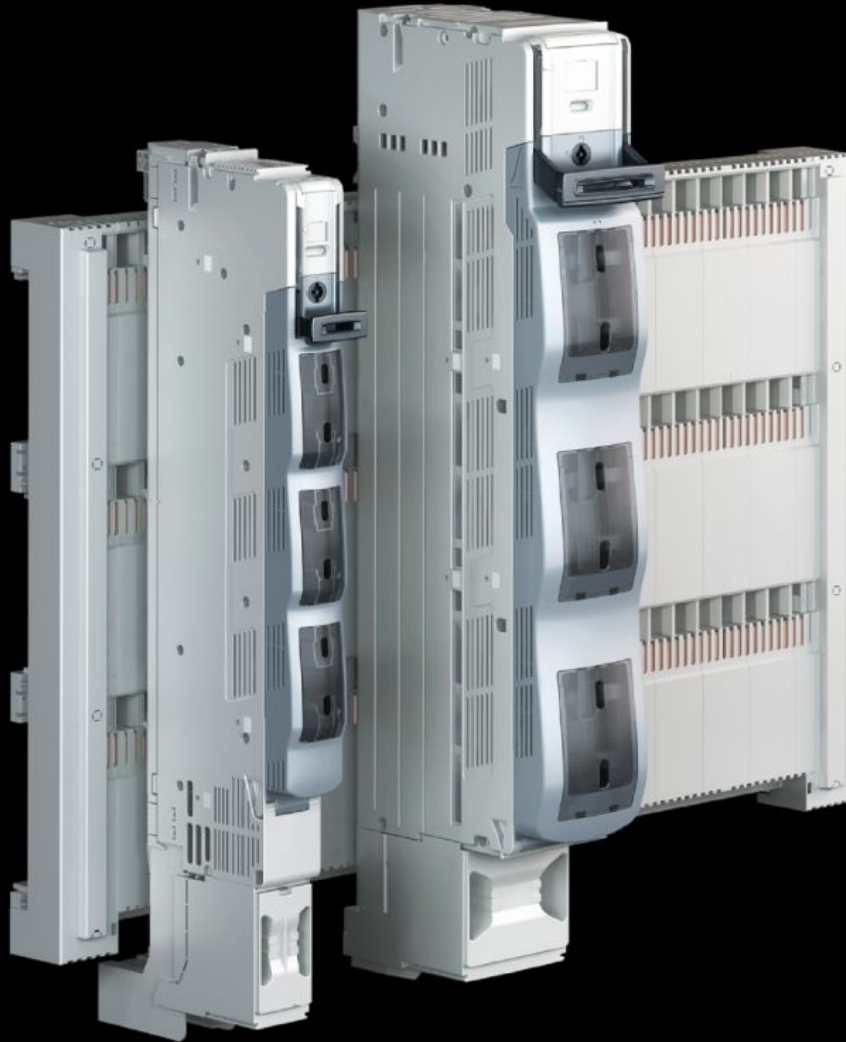


**Rittal – The System.**

Faster – better – everywhere.



**SV 9677.360**

**NH slimline switch-disconnector**

State: 19.10.2024. (Source: [rittal.com/hr-hr](http://rittal.com/hr-hr))

ENCLOSURES

POWER DISTRIBUTION

CLIMATE CONTROL

IT INFRASTRUCTURE

SOFTWARE & SERVICES

FRIEDHELM LOH GROUP



# SV 9677.360 - NH slimline switch-disconnector

3-pole, for bar systems with 185 mm centre-to-centre spacing.

## Features

Model No.	SV 9677.360
Design	3-pole, switchable
Function principle	Automatic quick-break contact allows operator-independent switching Double-break for reliable disconnection of the contacts
Material	Polyamide Fire protection corresponding to UL 94-V0 Contact tracks: Partially silver-plated hard copper
Colour	Chassis: RAL 7035 Cover: RAL 7001 Handle: RAL 7016
For NH size	3
For bar systems with centre-to-centre spacing	185 mm
Cable outlet	Bottom
Type of electrical connection	Screw M12
Installation type	Screw attachment
Number of poles	3-pole
Rated operating voltage	690 V, 3~
Rated operating current max.	630 A
Test specification	IEC/DIN EN 60 947-3 DIN EN 60 269-2 (fuse inserts)
Dimensions	Width: 100 mm Height: 772 mm
Connection for round conductor cross-sections	6 - 240 mm <sup>2</sup>

# Features

---

To fit busbars	Height: 10 mm
Packs of	1 pc(s).
Weight/pack	14,8 kg
Net weight	12.7
Gross weight	13.2
Copper weight (kg per piece)	4.717
Customs tariff number	85361090
EAN	4028177806801
ETIM 7.0	EC001040
ECLASS 8.0	27371401

# Approvals

---

Explanations	Declaration of conformity Declaration of conformity UK
--------------	---