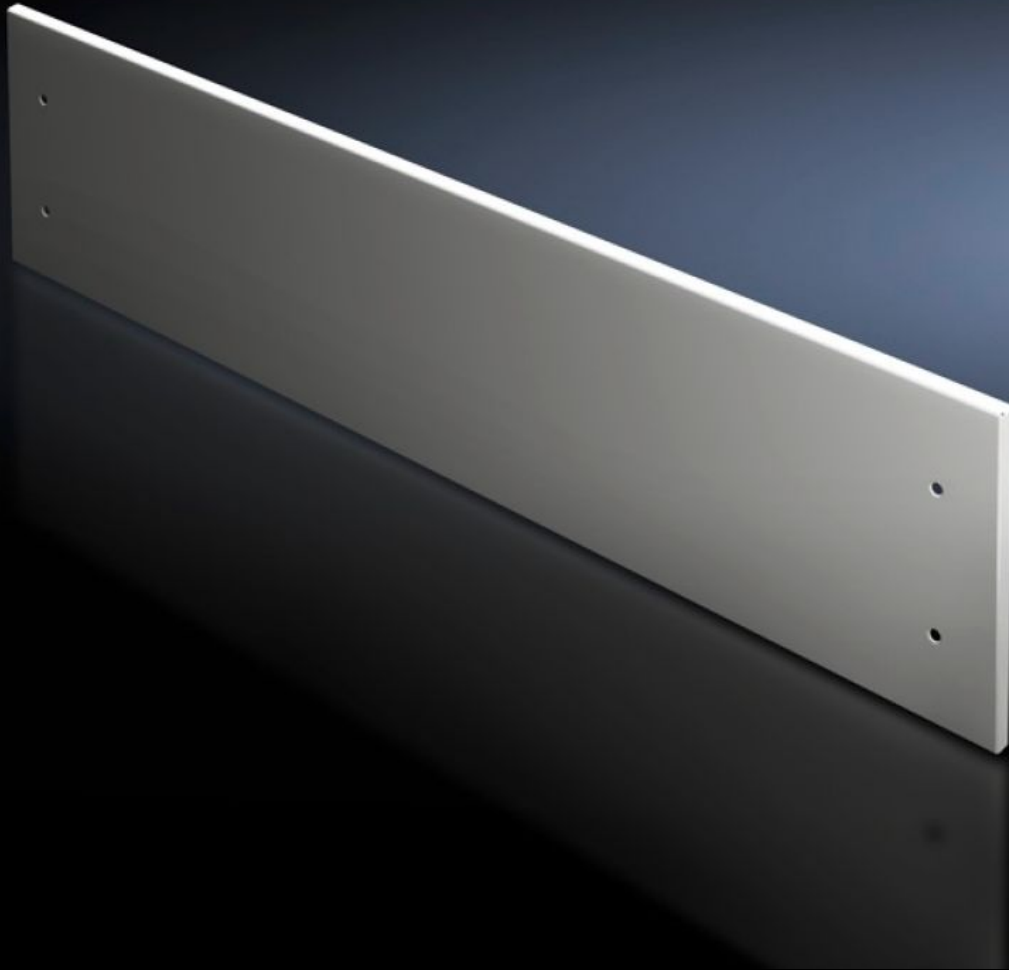


Rittal – The System.

Faster – better – everywhere.



SV 9672.318

Front trim panel, top

State: 19.10.2024. (Source: [rittal.com/hr-hr](https://www.rittal.com/hr-hr))

ENCLOSURES

POWER DISTRIBUTION

CLIMATE CONTROL

IT INFRASTRUCTURE

SOFTWARE & SERVICES

FRIEDHELM LOH GROUP



SV 9672.318 - Front trim panel, top for TS

To finish off at the top when using partial doors.

Features

Model No.	SV 9672.318
Product description	To finish off the modular front design at the top when using partial doors. The front trim panels may be removed from the outside by unscrewing. The cross member required for mounting is included with the supply of the mounted partial doors.
Material	Sheet steel, 2 mm
Surface finish	Textured paint
Colour	RAL 7035
Supply includes	Assembly parts
Height front panel top	100 mm
To fit	Width: = 800 mm
Packs of	1 pc(s).
Weight/pack	2,15 kg
Net weight	1.68
Gross weight	1.78
Customs tariff number	94039910
EAN	4028177697355
ETIM 7.0	EC000456
ECLASS 8.0	27142423