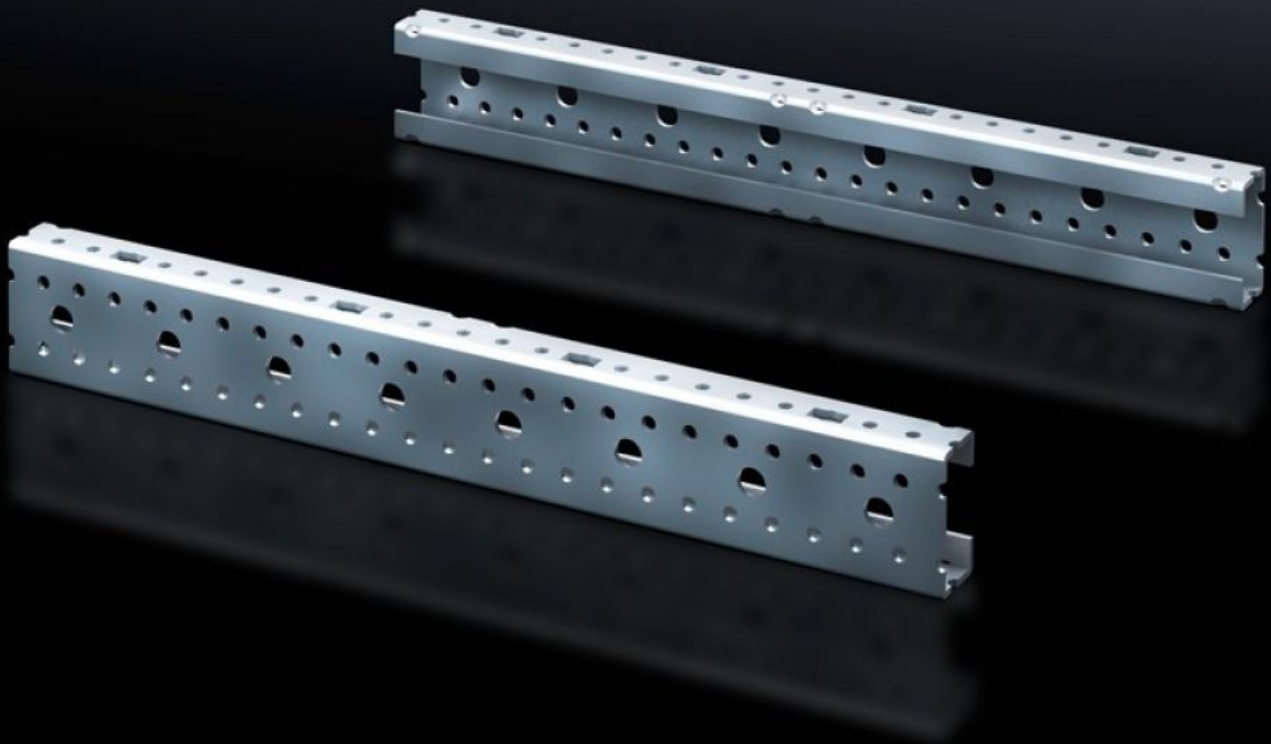


**Rittal – The System.**

Faster – better – everywhere.



# SV 9666.707

## Mounting angles ISV

State: 27.09.2024. (Source: [rittal.com/hr-hr](https://www.rittal.com/hr-hr))

ENCLOSURES

POWER DISTRIBUTION

CLIMATE CONTROL

IT INFRASTRUCTURE

SOFTWARE & SERVICES

FRIEDHELM LOH GROUP



# SV 9666.707 - Mounting angles ISV for VX

For vertical sub-division of the support frame in the VX/TS/SE enclosure.

## Features

Model No.	SV 9666.707
Product description	For vertical sub-division of the support frame in the enclosure.
Material	Sheet steel
Surface finish	Zinc-plated
Dimensions	Height: 1,050 mm
Size	Height units (U) @ 150 mm: 7
Packs of	2 pc(s).
Weight/pack	2,46 kg
Net weight	2.45
Gross weight	2.46
PCF/PU (Cradle-to-Gate)	9.4 kg CO2 eq (Cat B)
Note on the PCF class	Category B: PCF value (cradle-to-gate) approximated based on product weight and self-declared
Customs tariff number	73269098
EAN	4028177691537
ETIM 7.0	EC001900
ECLASS 8.0	27400613