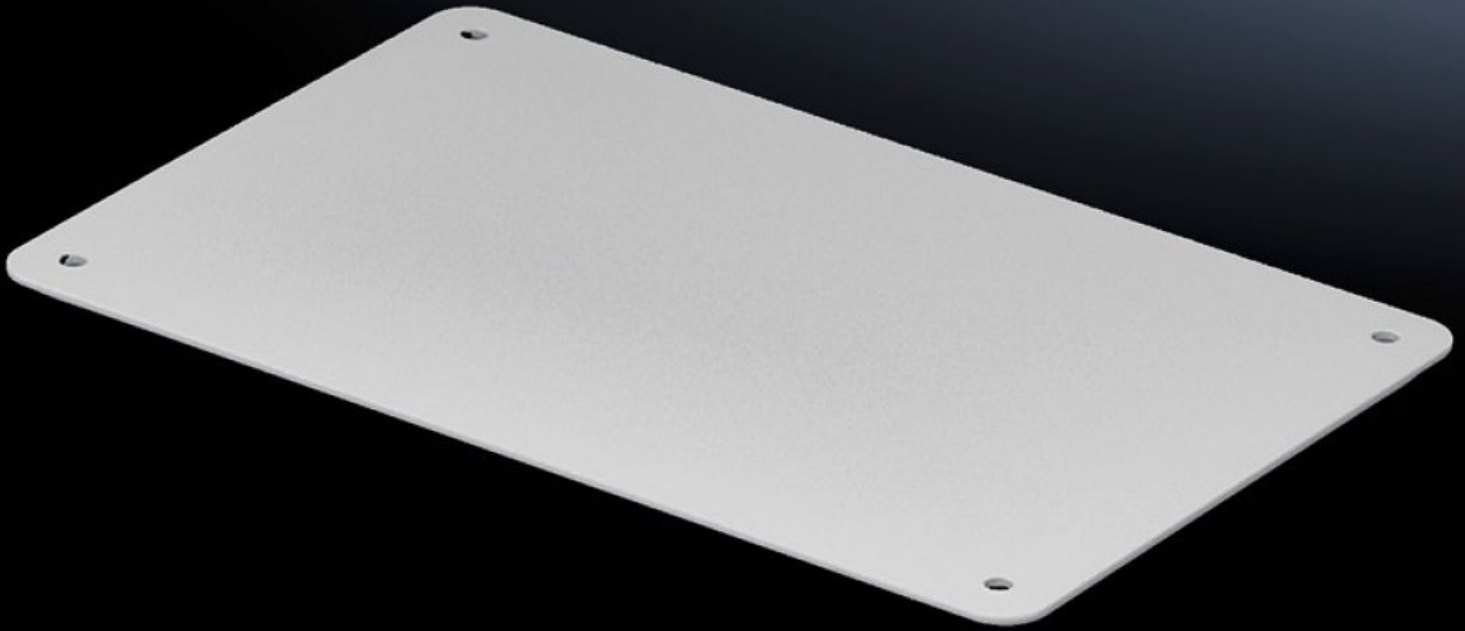


Rittal – The System.

Faster – better – everywhere.



SV 9665.785 Cable entry gland

State: 27.09.2024. (Source: [rittal.com/hr-hr](https://www.rittal.com/hr-hr))

ENCLOSURES

POWER DISTRIBUTION

CLIMATE CONTROL

IT INFRASTRUCTURE

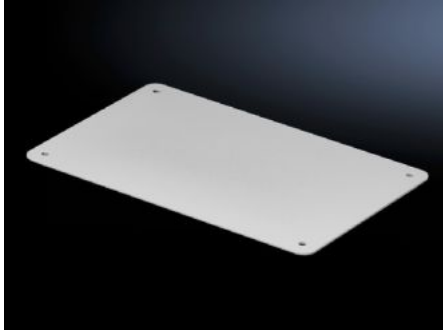
SOFTWARE & SERVICES

FRIEDHELM LOH GROUP



SV 9665.785 - Cable entry gland for roof plate

Cable entry glands for roof plates, with metric knockouts, sealing membranes, entry glands, or sealed.



Features

Model No.	SV 9665.785
Design	Solid
Product description	For simple, secure cable entry in the roof zone.
Material	Sheet steel, spray-finished
Colour	RAL 7035
Supply includes	Seal included
Dimensions	Width: 250 mm Depth: 160 mm
IP protection category to IEC 60529	IP 55
Packs of	4 pc(s).
Weight/pack	2,552 kg
Net weight	2.388
Gross weight	2.645
Customs tariff number	73269098
EAN	4028177525719
ETIM 7.0	EC000211

Features

ECLASS 8.0

27142421