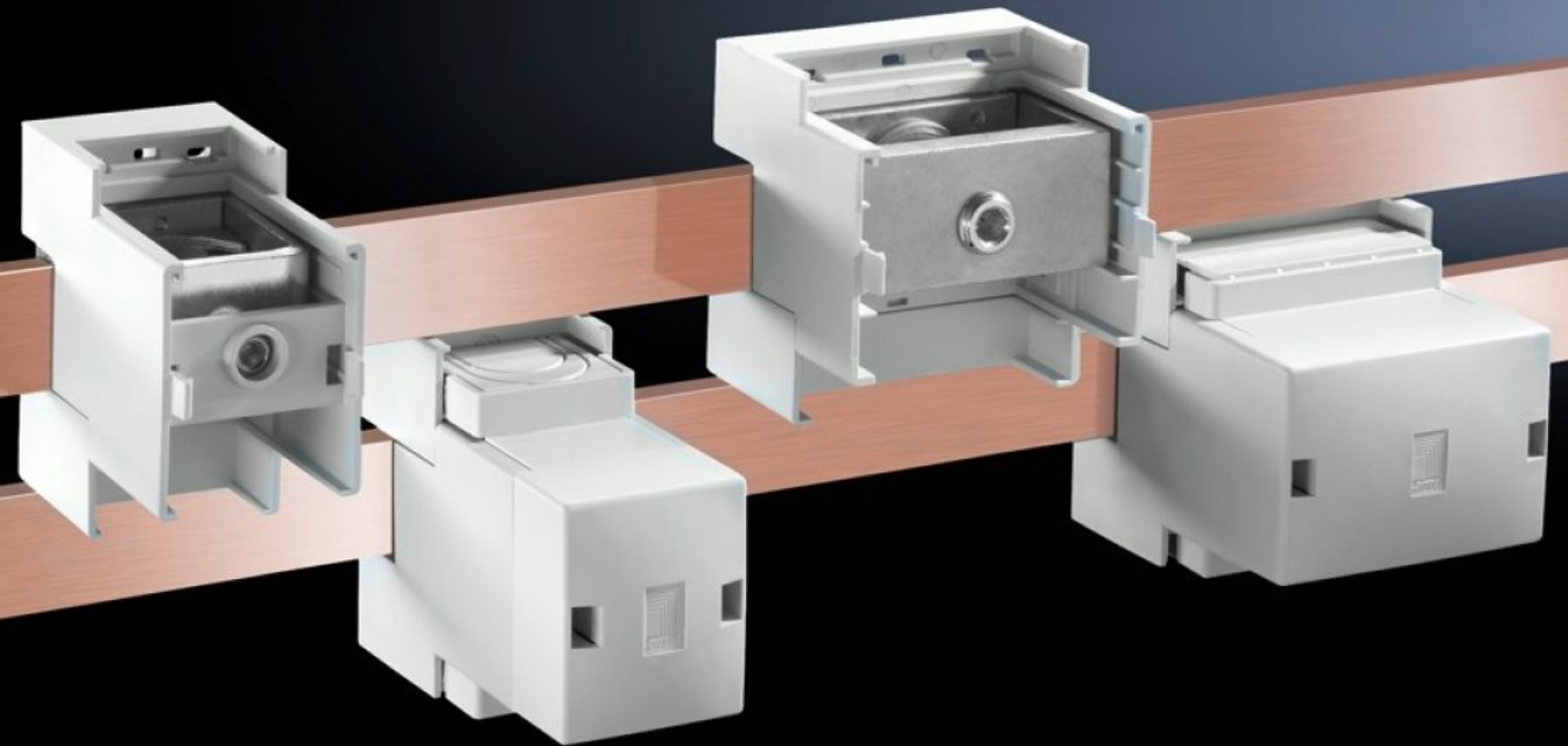


Rittal – The System.

Faster – better – everywhere.



SV 9342.311 Connection block

State: 27.09.2024. (Source: rittal.com/hr-hr)

ENCLOSURES

POWER DISTRIBUTION

CLIMATE CONTROL

IT INFRASTRUCTURE

SOFTWARE & SERVICES

FRIEDHELM LOH GROUP



SV 9342.311 - Connection block

For connecting round conductors and laminated copper bars. Suitable for busbars 12 x 5 to 30 x 10 mm and PLS 800/1600.

Features

Model No.	SV 9342.311
Product description	Suitable for busbars 12 x 5 to 30 x 10 mm and PLS 800/1600.
Material	Punched section: Polyamide Cover: ABS Fire protection corresponding to UL 94-V0
Colour	RAL 7035
Supply includes	3 terminals including cover
Clamping area for laminated copper bars with 5 mm bar thickness (W x H)	33 x 26 mm
Clamping area for laminated copper bars with 10 mm bar thickness (W x H)	33 x 22 mm
Cable outlet	Top/bottom
Rated current max.	800 A
Electrical ratings UL (SCCR)	65 kA - 480 V, circuit breaker max. 600 A, DIVQ/7 65 kA - 600 V, Fuse Class L max. 800 A, JDDZ/7
Note	With overvoltage category III, a rated operating voltage of 1,000 V (AC) is achieved. When using the terminal on 2-pole busbar systems (SV 9340.040), the terminal must be rotated through 180° for connection to the PE busbar.
Dimensions	Width: 50 mm Height: 88 mm
Connection of round conductors, fine wire with wire end ferrule	95 - 185 mm ²

Features

Connection of round conductors, multi-wire	95 - 300 mm ²
--	--------------------------

Packs of	3 pc(s).
----------	----------

Weight/pack	1,431 kg
-------------	----------

Net weight	1.227
------------	-------

Gross weight	1.431
--------------	-------

Copper weight (kg per piece)	0.096
------------------------------	-------

Customs tariff number	85369010
-----------------------	----------

EAN	4028177625259
-----	---------------

ETIM 7.0	EC001900
----------	----------

ECLASS 8.0	27400613
------------	----------

Approvals

Approvals	ABS DNV-GL Lloyds Register of Shipping UL + C-UL (listed)
-----------	--

Explanations	Declaration of conformity Declaration of conformity UK
--------------	---

Tender text

Terminal block, 1-pole

Terminal block 1-pole, cable outlet top / bottom
for busbar thickness 5 / 10 mm and PLS 800 / 1600

Type of connection

Round conductor fine wire with wire end ferrule:

95 - 185 qmm

Round conductor multi-wire: 95 - 300 qmm

Clamping area for laminated copper bars for
5 mm bar thickness: 33 x 27 mm

Clamping area for lamintate copper bars for
10 mm bar thickness: 33 x 22 mm

System:

Rittal RiLine60