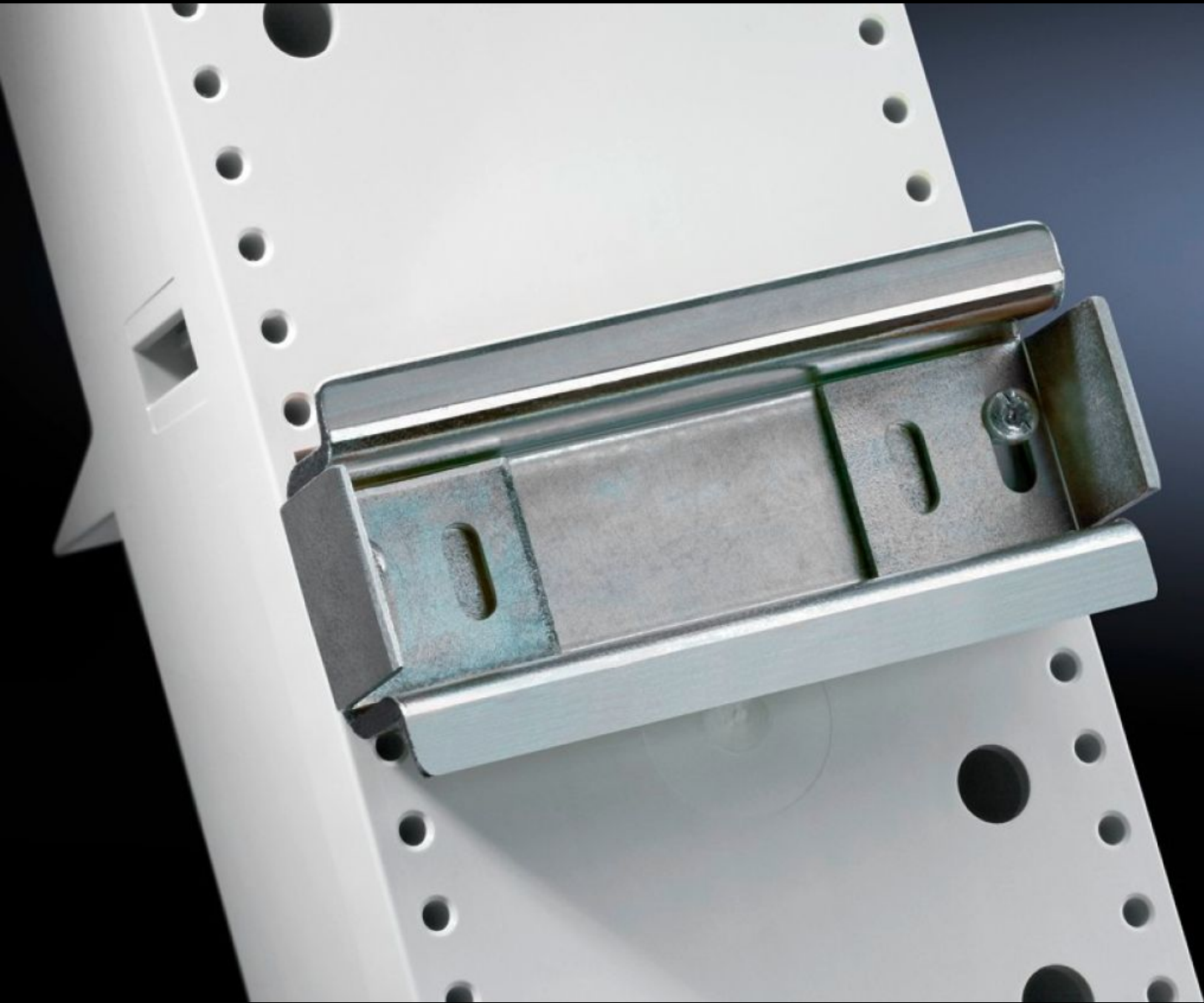


Rittal – The System.

Faster – better – everywhere.



SV 9320.120

Support rail 35 x 15 mm

State: 19.10.2024. (Source: [rittal.com/hr-hr](https://www.rittal.com/hr-hr))

ENCLOSURES

POWER DISTRIBUTION

CLIMATE CONTROL

IT INFRASTRUCTURE

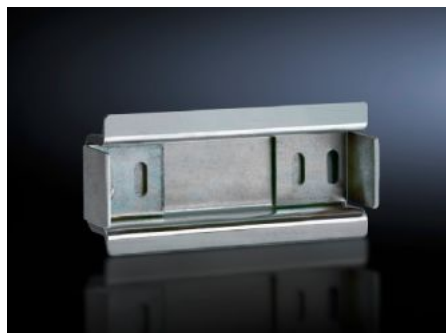
SOFTWARE & SERVICES

FRIEDHELM LOH GROUP



SV 9320.120 - Support rail 35 x 15 mm for Mini-PLS/ circuit-breaker component adaptors

Support rail for Mini-PLS and circuit-breaker component adaptors.



Features

Model No.	SV 9320.120
Material	Sheet steel
Surface finish	Zinc-plated
Supply includes	Assembly screws and side anti-slip guard
To fit Model No.	9342.400 9342.410 9629.000
Dimensions	Width: 72 mm
Packs of	5 pc(s).
Weight/pack	0,405 kg
Net weight	0.36
Gross weight	0.403
PCF/PU (cradle-to-gate)	1.5 kg CO2 eq (Cat B)
Note on the PCF class	Category B: PCF value (cradle-to-gate) approximated based on product weight and self-declared
Customs tariff number	73269098
EAN	4028177219762

Features

ETIM 7.0	EC001285
ECLASS 8.0	27141143

Tender text

Support rails

For mounting Siemens air circuit-breakers S3 on SV 9320.000, SV 9320.010 and SV 9629.000.

Including assembly screws.

Width: 72 mm

Height: 15 mm