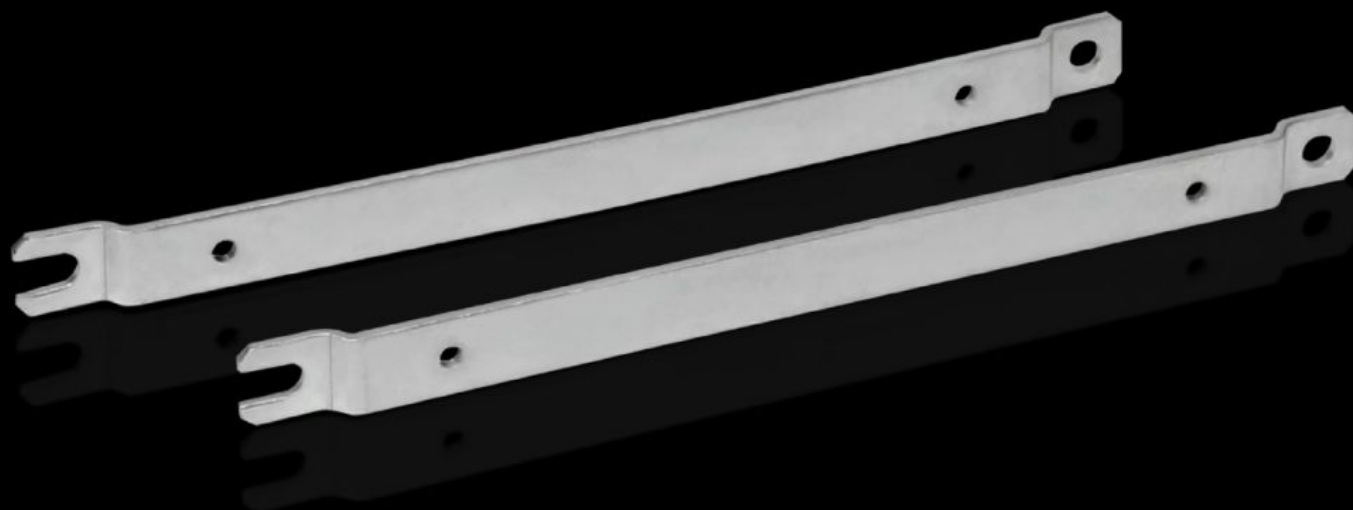


Rittal – The System.

Faster – better – everywhere.



GA 9121.230

Wall mounting bracket

State: 27.09.2024. (Source: [rittal.com/hr-hr](https://www.rittal.com/hr-hr))

ENCLOSURES

POWER DISTRIBUTION

CLIMATE CONTROL

IT INFRASTRUCTURE

SOFTWARE & SERVICES

FRIEDHELM LOH GROUP



GA 9121.230 - Wall mounting bracket for GA

For external mounting on surfaces – no need to dismantle the cover if pre-assembled.



Features

| | |
|-------------------------|---|
| Model No. | GA 9121.230 |
| Product description | For external mounting on surfaces – no need to remove the cover if pre-assembled. |
| Material | Sheet steel |
| Surface finish | Zinc-plated |
| To fit | Enclosure type: GA Height: ≥ 230 mm |
| Packs of | 2 pc(s). |
| Weight/pack | 0,288 kg |
| Net weight | 0.26 |
| Gross weight | 0.287 |
| PCF/PU (Cradle-to-Gate) | 1.1 kg CO2 eq (Cat B) |
| Note on the PCF class | Category B: PCF value (cradle-to-gate) approximated based on product weight and self-declared |
| Customs tariff number | 83024900 |
| EAN | 4028177154520 |
| ETIM 7.0 | EC002625 |
| ECLASS 8.0 | 27189234 |