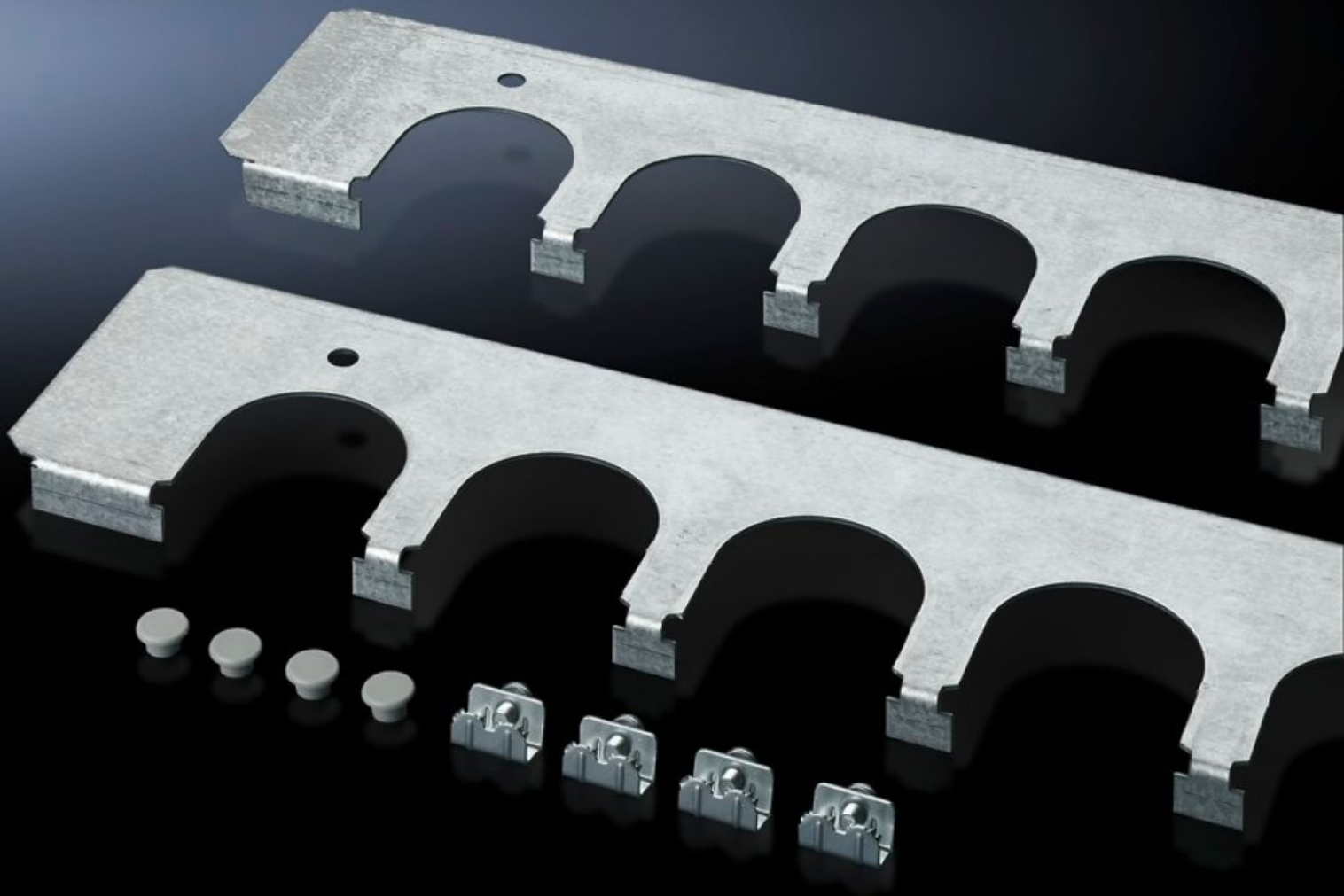


Rittal – The System.

Faster – better – everywhere.



SZ 8800.120 Cable entry plates

State: 27.09.2024. (Source: [rittal.com/hr-hr](https://www.rittal.com/hr-hr))

ENCLOSURES

POWER DISTRIBUTION

CLIMATE CONTROL

IT INFRASTRUCTURE

SOFTWARE & SERVICES

FRIEDHELM LOH GROUP



SZ 8800.120 - Cable entry plates for installation in TS, SE and PC enclosures

Secure cable routing in conjunction with cable entry grommets, connector grommets. Fitted instead of standard gland plates.

Features

| | |
|-----------------------|----------------------------------------------------------------------------------------------------------------------------------------------------------------------------------------------------------------------------------------------|
| Model No. | SZ 8800.120 |
| Product description | Secure cable routing in conjunction with cable entry grommets, connector grommets. Fitted instead of standard gland plates. |
| Benefits | Particularly well-suited to cables with different cross-sections Thanks to the enclosure symmetry, where dimensions permit, cable entry plates may also be inserted in the enclosure depth, right and left, analogous to the gland plates |
| Material | Sheet steel |
| Surface finish | Zinc-plated |
| Supply includes | Assembly parts |
| Number of cut-outs | 6 |
| To fit | Enclosure type: TS: = 1,200 mm Enclosure type: SE |
| Packs of | 4 pc(s). |
| Weight/pack | 2,176 kg |
| Net weight | 1.976 |
| Gross weight | 2.174 |
| Customs tariff number | 73269098 |
| EAN | 4028177212497 |
| ETIM 7.0 | EC002620 |
| ECLASS 8.0 | 27189261 |