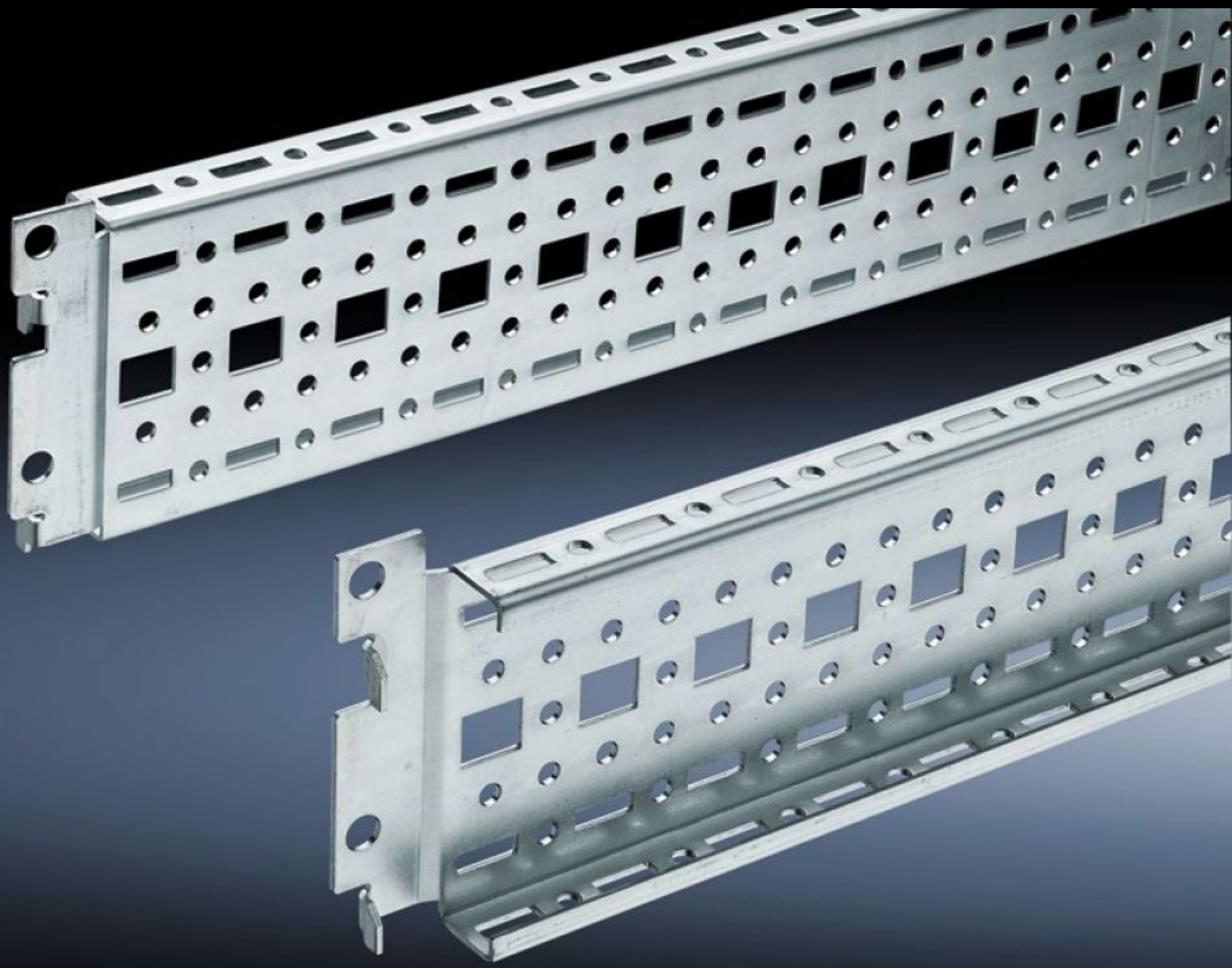


Rittal – The System.

Faster – better – everywhere.



TS 8612.030

**TS punched section with mounting
flange, 17 x 73 mm**

State: 27.09.2024. (Source: [rittal.com/hr-hr](https://www.rittal.com/hr-hr))

ENCLOSURES

POWER DISTRIBUTION

CLIMATE CONTROL

IT INFRASTRUCTURE

SOFTWARE & SERVICES

FRIEDHELM LOH GROUP



TS 8612.030 - TS punched section with mounting flange, 17 x 73 mm

For universal skeleton structures or partial assembly. Simply locate into the punchings and secure.



Features

Model No.	TS 8612.030
Design	For the inner mounting level and for mounting on doors
Product description	For universal skeleton structures or partial assembly. Simply locate into the punchings and secure.
Material	Sheet steel
Surface finish	Zinc-plated
Supply includes	Assembly screws
Length	290 mm
To fit door width	400 mm
Installation options	On the vertical TS, VX SE enclosure section: On the inner mounting level, height-offset all-round On the horizontal VX SE enclosure section, top in the depth In TP via rail for interior installation: In the width, for inner mounting level As a mounting kit for component shelves in TS, VX SE, simply locate and secure
Assembly instruction	The rail for internal mounting is required when installing in TP

Features

To fit	Enclosure type: VX SE TP PC IW To fit width/depth: 300 mm
Packs of	4 pc(s).
Weight/pack	1,352 kg
Net weight	1.2
Gross weight	1.32
PCF/PU (Cradle-to-Gate)	5.2 kg CO2 eq (Cat B)
Note on the PCF class	Category B: PCF value (cradle-to-gate) approximated based on product weight and self-declared
Customs tariff number	73269098
EAN	4028177611504
ETIM 7.0	EC002625
ECLASS 8.0	27189234