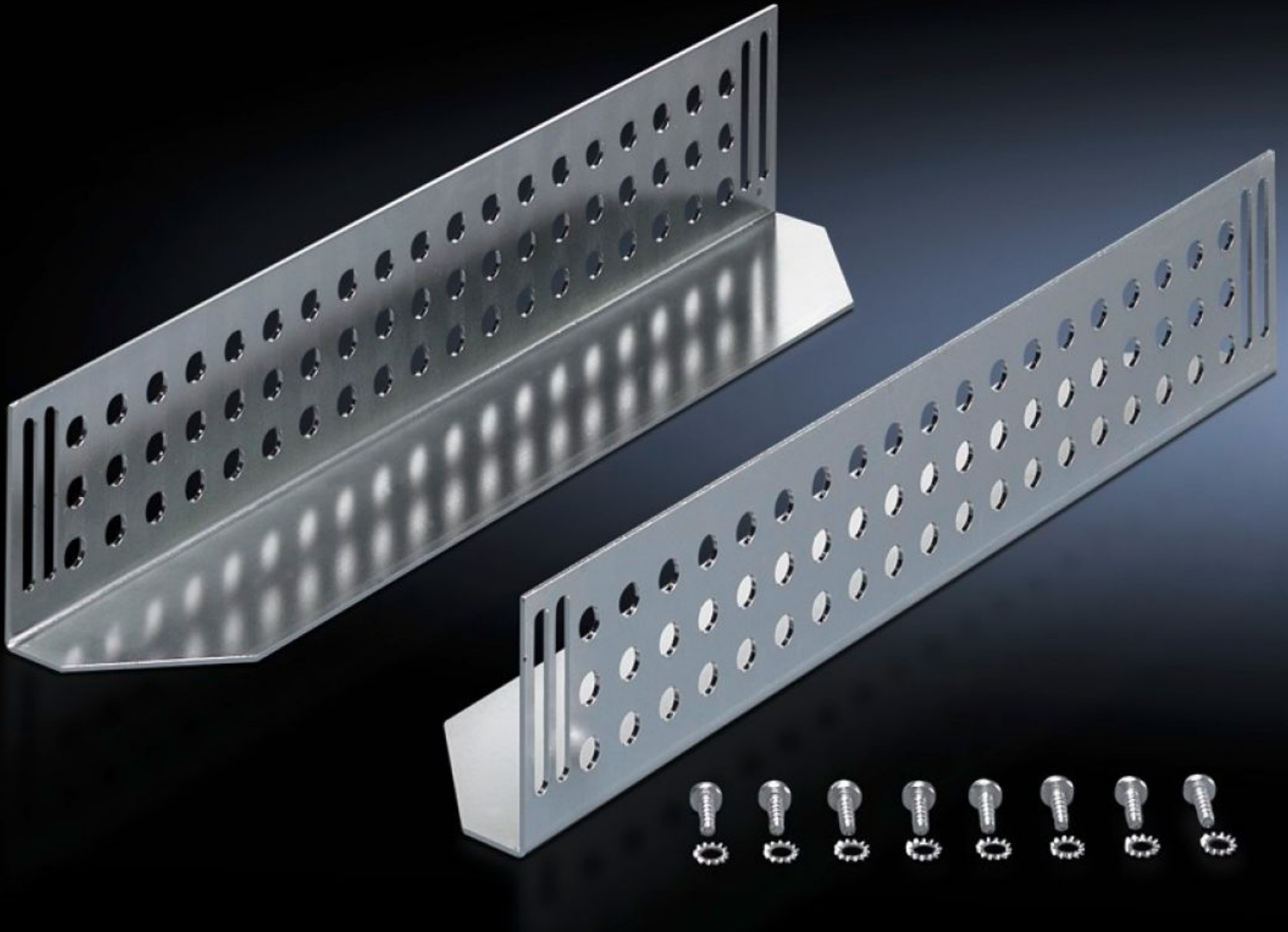


# Rittal – The System.

Faster – better – everywhere.



## DK 7963.510 Slide rail

State: 27.09.2024. (Source: [rittal.com/hr-hr](http://rittal.com/hr-hr))

ENCLOSURES

POWER DISTRIBUTION

CLIMATE CONTROL

IT INFRASTRUCTURE

SOFTWARE & SERVICES

FRIEDHELM LOH GROUP



# DK 7963.510 - Slide rail for TE

For mounting between a front and a rear pair of mounting angles, to support heavy 482.6 mm (19") components.

## Features

Model No.	DK 7963.510
Product description	For mounting between the front and rear 482.6 mm (19") mounting levels. The slide rails can be used to support heavy 482.6 mm (19") components.
Material	Sheet steel
Surface finish	Zinc-plated
Supply includes	Assembly parts
Distance between mounting levels	595 mm
Load capacity static	800 N
Contact surface	Width: 85 mm Depth: 524 mm
To fit	Enclosure type: TE 8000
Installation dimensions	Installation depth for components: 482.6 mm Installation width for components: 19"
Packs of	2 pc(s).
Weight/pack	2,814 kg
Net weight	2.4
Gross weight	2.814
Customs tariff number	73269098
EAN	4028177443952
ETIM 7.0	EC002620
ECLASS 8.0	27189261

# Tender text

Slide rail for TE/FR(i), L = 524 mm

Material: Sheet steel, zinc-plated, passivated