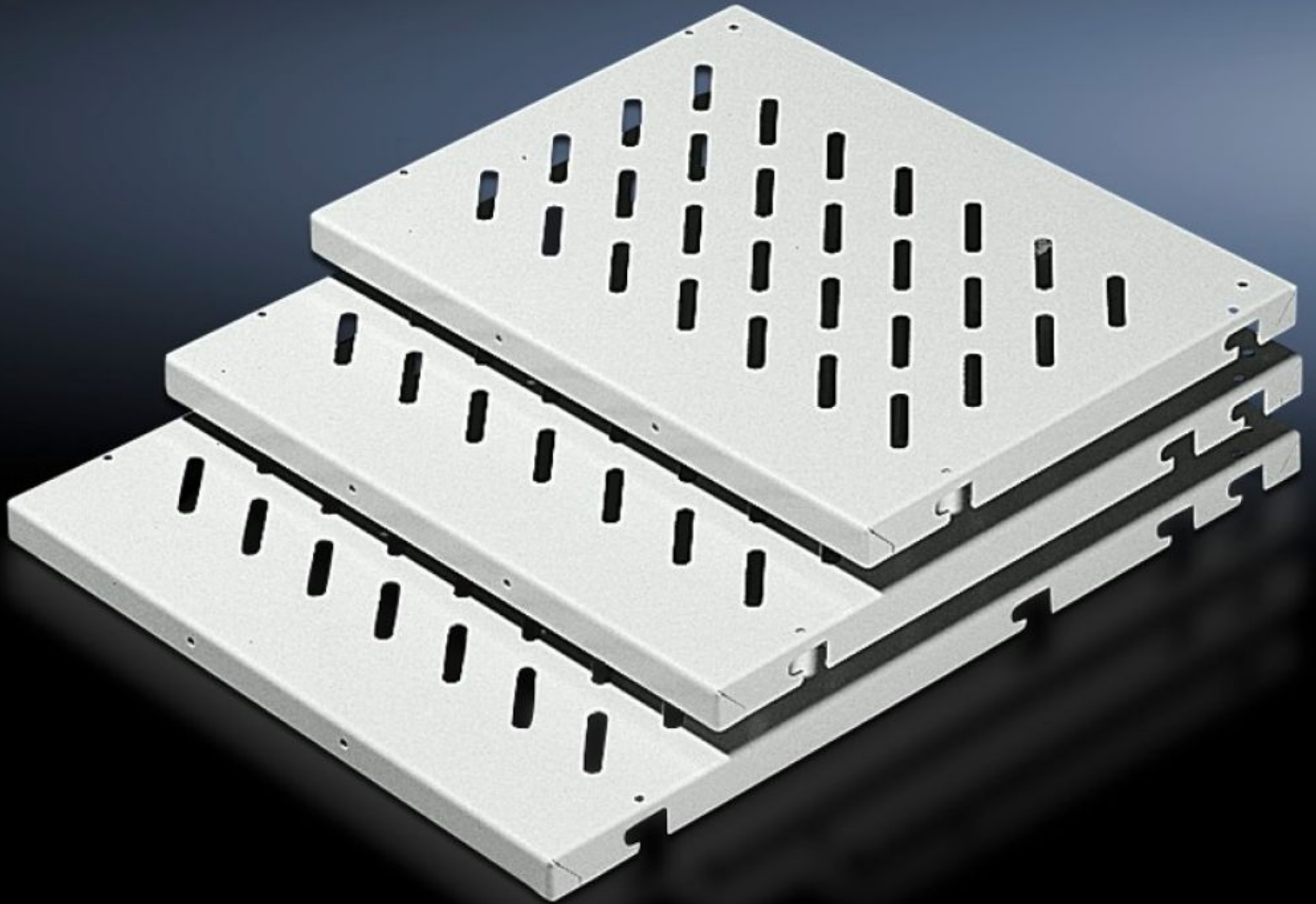


Rittal – The System.

Faster – better – everywhere.



DK 7464.035

Component shelf for frame attachment

State: 27.09.2024. (Source: [rittal.com/hr-hr](https://www.rittal.com/hr-hr))

ENCLOSURES

POWER DISTRIBUTION

CLIMATE CONTROL

IT INFRASTRUCTURE

SOFTWARE & SERVICES

FRIEDHELM LOH GROUP



DK 7464.035 - Component shelf for frame attachment

Enclosure width 600 and 800 mm

For frame attachment, for installation in enclosures without 482.6 mm (19") accommodation, enclosure width: 600 and 800 mm, load capacity: 50 kg / 100 kg.

Features

Model No.	DK 7464.035
Design	Slotted
Product description	For frame attachment, for installation in enclosures without 482.6 mm (19") accommodation.
Benefits	Mounting bolts or mounting rails may be installed on a 25 mm pitch pattern in the enclosure depth. Mounting hole for handles provided.
Applications	For installation in enclosures without 482.6 mm (19") accommodation
Material	Sheet steel
Surface finish	Spray-finished
Colour	RAL 7035
Supply includes	Component shelf, slotted 2 mounting rails
Installation options	Static installation: Component shelf, 50 kg with fixing bolts on punched section without mounting flange Static installation: Component shelf, 100 kg with mounting rails on punched sections without mounting flange Depth variable: Component shelf, 50 kg with telescopic slides on punched sections without mounting flange
Load capacity	100 kg area load
Assembly instruction	Additionally, two punched sections with mounting flanges are required for the inner mounting level
Note	Max. depth of component shelves = Enclosure depth - 100 mm.

Features

Dimensions	Width: 471 mm Height: 45 mm Depth: 400 mm
To fit	Enclosure type: VX VX IT TS IT Width: 600 mm
Packs of	1 pc(s).
Weight/pack	5,629 kg
Net weight	5.348
Gross weight	5.629
PCF/PU (Cradle-to-Gate)	21.4 kg CO2 eq (Cat B)
Note on the PCF class	Category B: PCF value (cradle-to-gate) approximated based on product weight and self-declared
Customs tariff number	94039910
EAN	4028177165977
ETIM 7.0	EC002620
ECLASS 8.0	27189261

Tender text

Component shelves for 600 mm wide network enclosures

Component shelves for 600 mm wide network enclosures

Version: Max. load capacity 100 kg

Component shelves, W x D = 471 x 400 mm, 2 mm thick sheet steel version; for installing in 600 mm wide network enclosures.

The component shelf is slotted to prevent the accumulation of heat. The component shelves can hold a maximum load of 100 kg.

The height of the fitted component shelves can be adjusted using the 25 mm pitch pattern in network enclosures with a DIN pitch pattern but is infinitely adjustable in network enclosures with aluminium frames.

Material: Sheet steel

Spray finish: RAL 7035

Dimensions: W x D: 471 x 400 mm