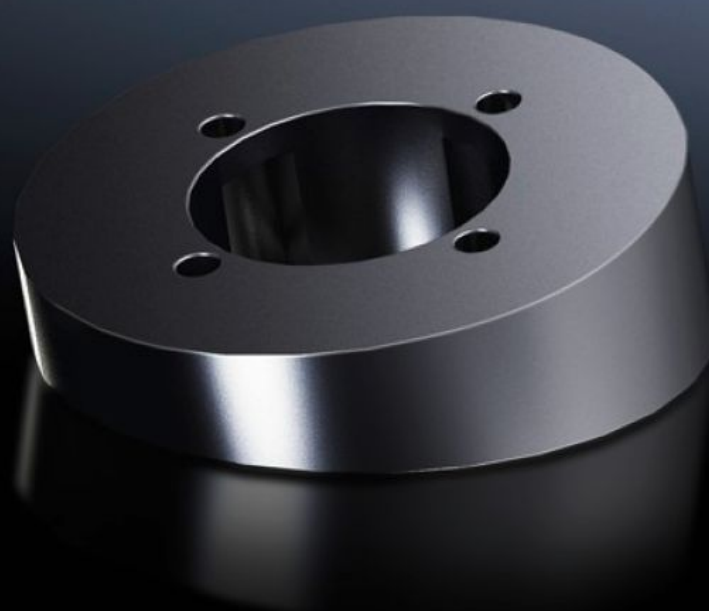


**Rittal – The System.**

Faster – better – everywhere.



**CP 6664.100**

**Tilting adapter 10° CP 40, stainless steel**

State: 27.09.2024. (Source: [rittal.com/hr-hr](https://www.rittal.com/hr-hr))

ENCLOSURES

POWER DISTRIBUTION

CLIMATE CONTROL

IT INFRASTRUCTURE

SOFTWARE & SERVICES

FRIEDHELM LOH GROUP



# CP 6664.100 - Tilting adapter 10° CP 40, stainless steel

## Features

Model No.	CP 6664.100
Design	Tilting adaptor 10°
Material	Stainless steel 1.4305 (AISI 303)
IP protection category to IEC 60 529	IP 66 to IEC 60 529, 2014-09 IP X9 to IEC 60 529, 2014-09
Rifid y/n	Yes
Packs of	1 pc(s).
Weight/pack	0,7 kg
Net weight	0.62
Gross weight	0.721
Customs tariff number	73269098
EAN	4028177195066
ETIM 7.0	EC000882
ECLASS 8.0	27400556

## Approvals

Explanations

Manufacturer's declaration