

Rittal – The System.

Faster – better – everywhere.



SV 3528.000

PLS special busbars E-Cu

State: 27.06.2024. (Source: [rittal.com/hr-hr](https://www.rittal.com/hr-hr))

ENCLOSURES

POWER DISTRIBUTION

CLIMATE CONTROL

IT INFRASTRUCTURE

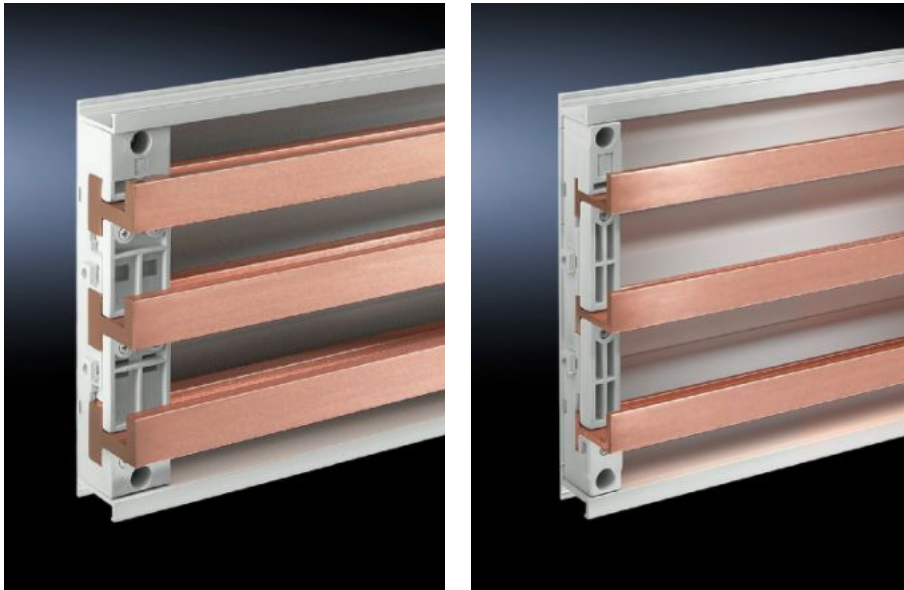
SOFTWARE & SERVICES

FRIEDHELM LOH GROUP



SV 3528.000 - PLS special busbars E-Cu

Lengths range from 495 mm to 2400 mm.



Features

Model No.	SV 3528.000
Material	E-Cu
Bar thickness	10 mm
Cross-section	900 mm ²
Length	695 mm
Note	May be cut individually to required length
Busbar type	Busbar E-Cu
To fit busbar system	PLS 1600
Dimensions	Length: 695 mm
To fit	Width: = 800 mm
Packs of	3 pc(s).
Weight/pack	16,86 kg
Copper weight (kg per piece)	5.62
Customs tariff number	74071000

Features

EAN	4028177043787
ETIM 7.0	EC001522
ECLASS 8.0	27370303

Approvals

Approvals	UL + C-UL (listed)
Explanations	Declaration of conformity Declaration of conformity UK

Tender text

PLS special busbar E-Cu 1600 A
Bar thickness: 10 mm
Rated current: 1600 A
Cross-section: 900 mm²
Length: 695 mm
Enclosure width: 800 mm
(Rittal PS/TS/ES enclosure systems)