

Rittal – The System.

Faster – better – everywhere.



SV 3516.000

PLS special busbars E-Cu

State: 19.10.2024. (Source: [rittal.com/hr-hr](https://www.rittal.com/hr-hr))

ENCLOSURES

POWER DISTRIBUTION

CLIMATE CONTROL

IT INFRASTRUCTURE

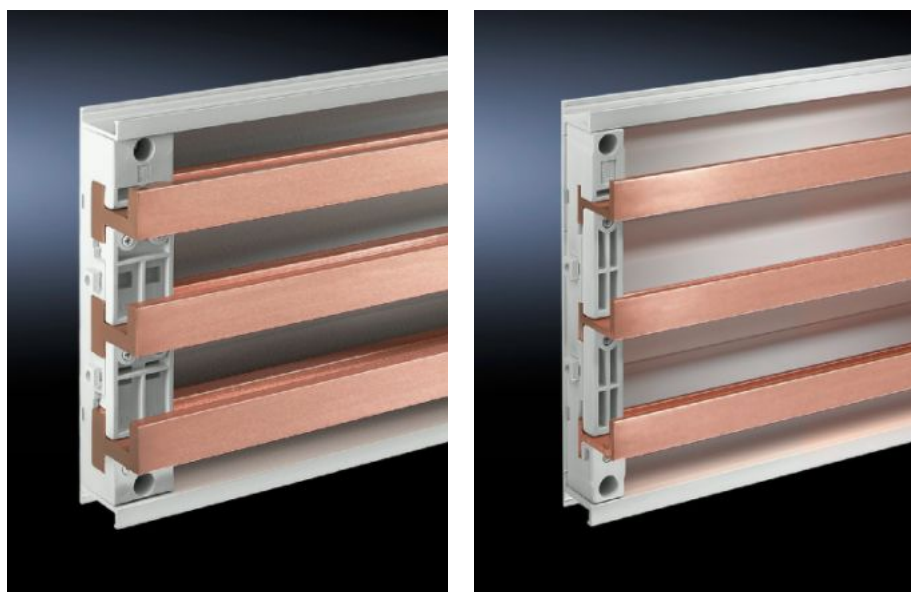
SOFTWARE & SERVICES

FRIEDHELM LOH GROUP



SV 3516.000 - PLS special busbars E-Cu

Lengths range from 495 mm to 2400 mm.



Features

Model No.	SV 3516.000
Material	E-Cu
Bar thickness	10 mm
Cross-section	900 mm ²
Length	2.400 mm
Note	May be cut individually to required length
Busbar type	Busbar E-Cu
To fit busbar system	PLS 1600
Dimensions	Length: 2,400 mm
Packs of	1 pc(s).
Weight/pack	19,21 kg
Net weight	18.71
Gross weight	19.2
Copper weight (kg per piece)	18.71

Features

Customs tariff number	74071000
EAN	4028177043558
ETIM 8	EC001522
ETIM 7.0	EC001522
ECLASS 8.0	27370303

Approvals

Approvals	UL + C-UL (listed)
Explanations	Declaration of conformity Declaration of conformity UK

Tender text

PLS special busbar E-Cu 1600 A

Bar thickness: 10 mm

Rated current: 1600 A

Cross-section: 900 mm²

Length: 2400 mm

Enclosure width: variable