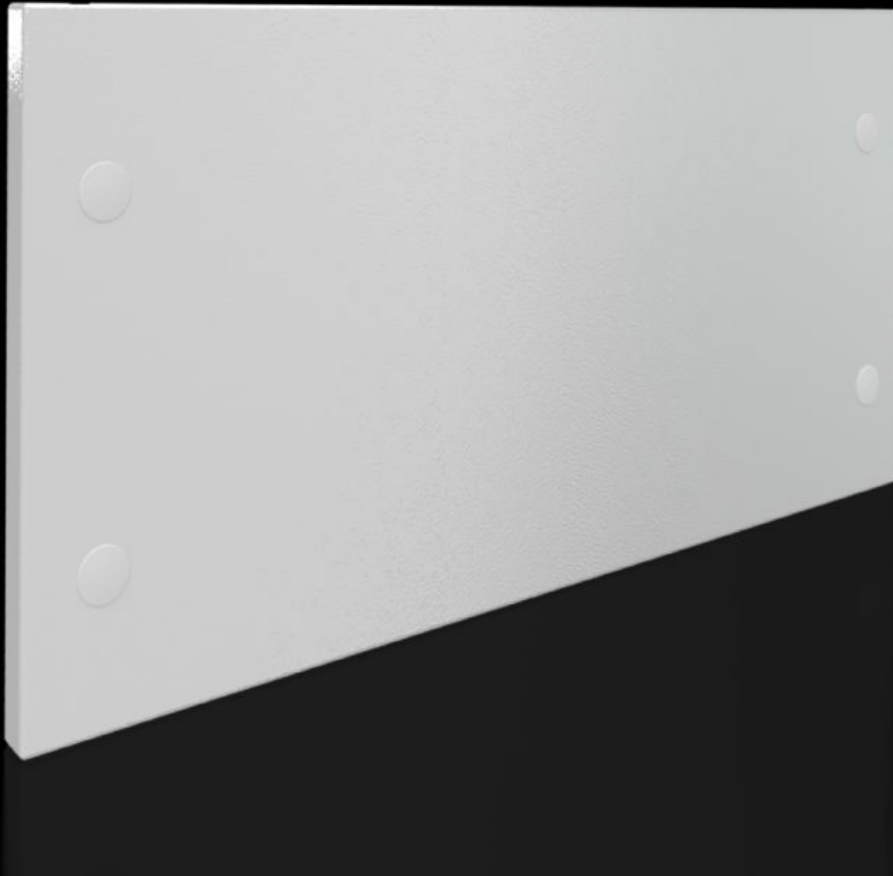
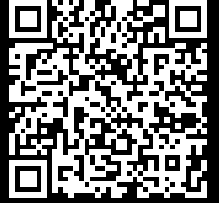


Rittal – The System.

Faster – better – everywhere.



SV 9682.346

Front trim panel, bottom, solid

State: 27/09/2024 (Source: [rittal.com/com-en](https://www.rittal.com/com-en))

ENCLOSURES

POWER DISTRIBUTION

CLIMATE CONTROL

IT INFRASTRUCTURE

SOFTWARE & SERVICES

FRIEDHELM LOH GROUP



SV 9682.346 - Front trim panel, bottom, solid for VX

To finish off at the bottom when using partial doors.

Features

Model No.	SV 9682.346
Design	Solid
Product description	To finish off the modular front design at the bottom when using partial doors. The front trim panels may be removed from the outside by unscrewing.
Material	Sheet steel, 1.5 mm
Surface finish	Textured paint
Colour	RAL 7035
Supply includes	Front trim panel Cross member Assembly parts
Dimensions	Height: 300 mm
To fit	Width: = 600 mm
Packs of	1 pc(s).
Weight/pack	3.64 kg
Net weight	3.24
Gross weight	3.64
PCF/PU (Cradle-to-Gate)	13.9 kg CO2 eq (Cat B)
Note on the PCF class	Category B: PCF value (cradle-to-gate) approximated based on product weight and self-declared
Customs tariff number	94039910
EAN	4028177929975
ETIM 7.0	EC000456
ECLASS 8.0	27142423

Approvals

Approvals

UL + C-UL (listed)

UL + C-UL - FTTA

Explanations

Declaration of conformity

Declaration of conformity UK