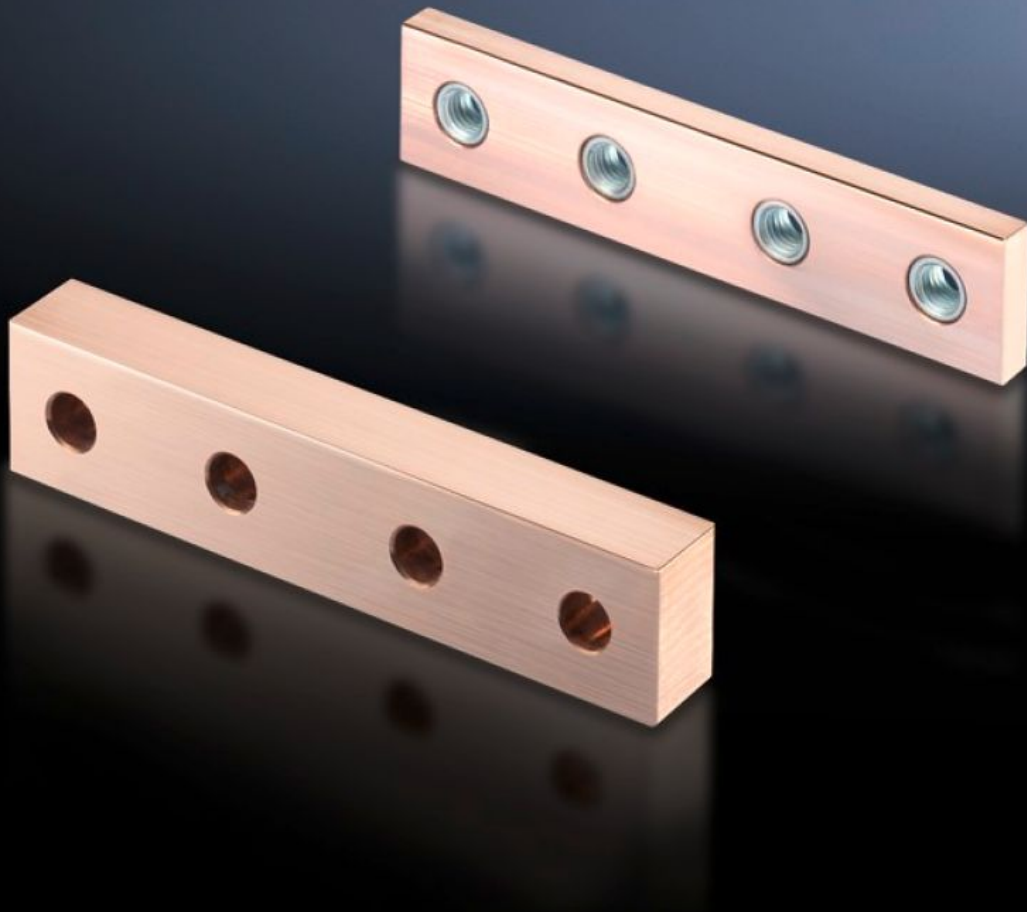


**Rittal – The System.**

Faster – better – everywhere.



# SV 9676.621

## Longitudinal connectors

State: 19/10/2024 (Source: [rittal.com/com-en](http://rittal.com/com-en))

ENCLOSURES

POWER DISTRIBUTION

CLIMATE CONTROL

IT INFRASTRUCTURE

SOFTWARE & SERVICES

FRIEDHELM LOH GROUP



# SV 9676.621 - Longitudinal connectors

For connecting Flat-PLS busbar systems, no drilling required.

## Features

Model No.	SV 9676.621
Applications	For connecting Flat-PLS busbar systems, no drilling required.
Material	E-Cu
Number of bars per conductor	2
To fit busbar system	Flat-PLS 60 Flat-PLS 100
Packs of	1 pc(s).
Weight/pack	1.1 kg
Net weight	1.1
Gross weight	1.12
Copper weight (kg per piece)	1.12
Customs tariff number	74198090
EAN	4028177625587
ETIM 7.0	EC001900
ECLASS 8.0	27400613

## Approvals

Approvals	ABS DNV-GL Lloyds Register of Shipping
Explanations	Declaration of conformity Declaration of conformity UK