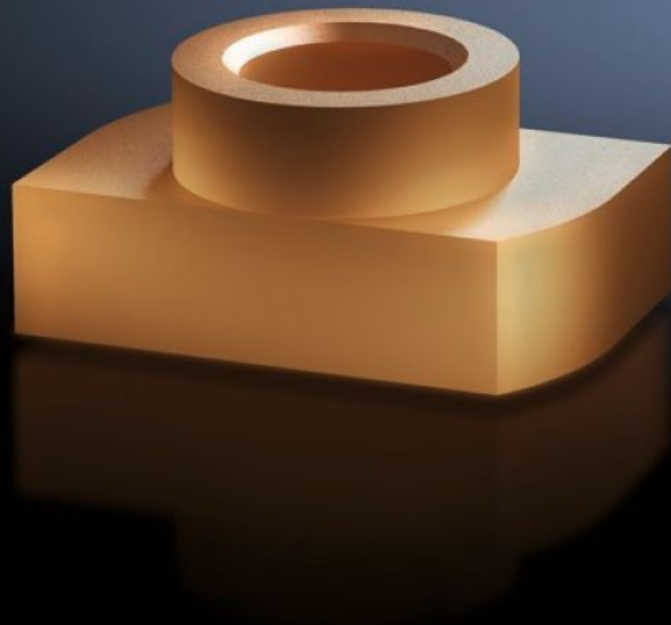


Rittal – The System.

Faster – better – everywhere.



SV 9650.920

Sliding nut

State: 15/12/2024 (Source: rittal.com/com-en)

ENCLOSURES

POWER DISTRIBUTION

CLIMATE CONTROL

IT INFRASTRUCTURE

SOFTWARE & SERVICES

FRIEDHELM LOH GROUP



SV 9650.920 - Sliding nut for Maxi-PLS busbars

May be retro-fitted by sliding into the Maxi-PLS busbar section.

Features

Model No.	SV 9650.920
Product description	For attaching flat copper bars and connection components to Maxi-PLS busbars. For sliding into the busbar section retrospectively and tightening the threaded bolts.
Material	E-Cu
To fit busbars	Maxi-PLS 60
Dimensions	Thread: M12
Packs of	15 pc(s).
Net weight	0.21
Gross weight	0.259
Customs tariff number	74198090
EAN	4028177239708
ETIM 9	EC002525
ECLASS 8.0	23110804

Approvals

Approvals	UL + C-UL (listed)
-----------	--------------------