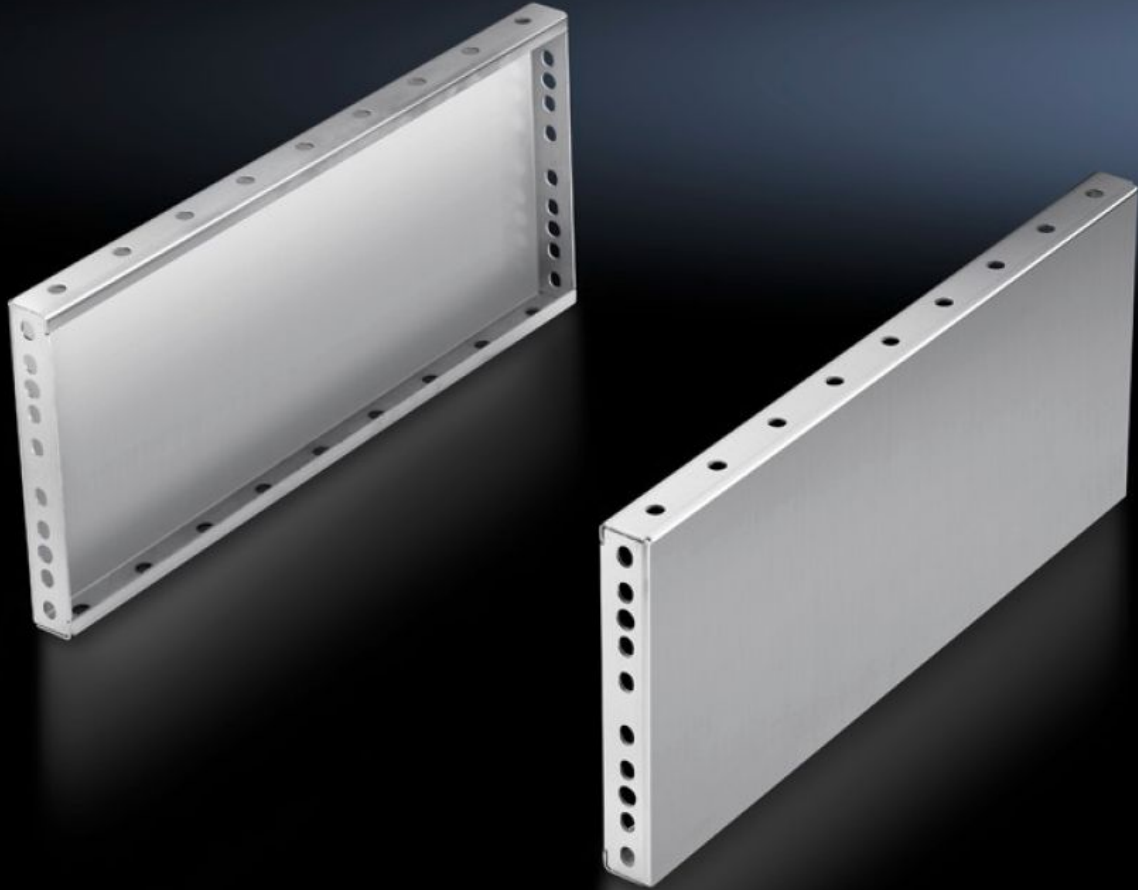
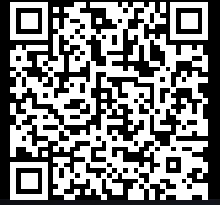


Rittal – The System.

Faster – better – everywhere.



TS 8702.040

Base/plinth trim panels, side, 200 mm

State: 27/09/2024 (Source: rittal.com/com-en)

ENCLOSURES

POWER DISTRIBUTION

CLIMATE CONTROL

IT INFRASTRUCTURE

SOFTWARE & SERVICES

FRIEDHELM LOH GROUP



TS 8702.040 - Base/plinth trim panels, side, 200 mm Stainless steel for base/plinth components front and rear

For mounting between the base/plinth components. At 200 mm height, two 100 mm base/plinth trims may be used.

Features

Model No.	TS 8702.040
Product description	For mounting between the base/plinth components. At 200 mm height, two 100 mm base/plinth trims may be used.
Material	Stainless steel 1.4301 (AISI 304)
Surface finish	Brushed, grain 400
Supply includes	2 base/plinth trim panels Assembly parts
Assembly instruction	Base/plinth trim panels, side, 100 mm, may be installed rotated through 90° to stabilise bayed base/plinth components. The base/plinth baying bracket is required for this purpose
Dimensions	Height: 200 mm
To fit	Enclosure type: TS: = 400 mm
Packs of	2 pc(s).
Weight/pack	2.686 kg
Net weight	2.486
Gross weight	2.685
Customs tariff number	94039910
EAN	4028177300019
ETIM 7.0	EC000721
ECLASS 8.0	27182003