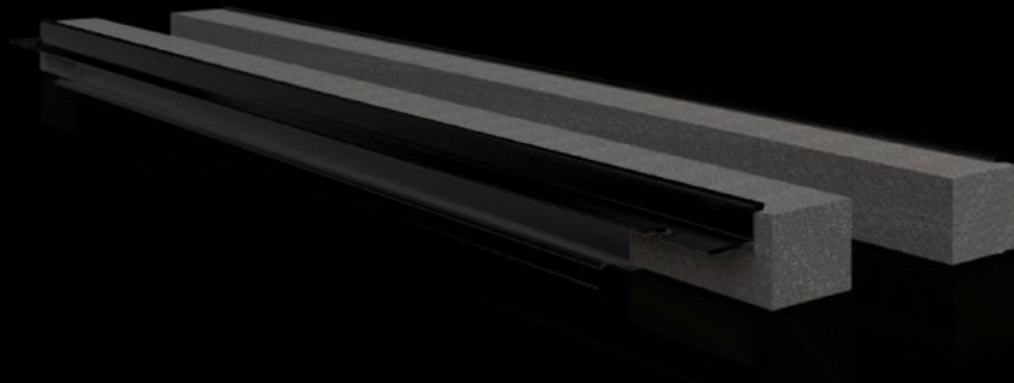


# Rittal – The System.

Faster – better – everywhere.



## VX 8618.811

## Section for cable entry, rear

State: 17/07/2024 (Source: [rittal.com/com-en](http://rittal.com/com-en))

ENCLOSURES

POWER DISTRIBUTION

CLIMATE CONTROL

IT INFRASTRUCTURE

SOFTWARE & SERVICES

FRIEDHELM LOH GROUP



# VX 8618.811 - Section for cable entry, rear for VX, VX SE

For top-mounting on the gland plate and enclosure frame.

## Features

Model No.	VX 8618.811
Product description	For top-mounting on the gland plate and enclosure frame.
Benefits	Simple assembly Full-surface support High level of sealing of cables inserted into the enclosure
Applications	For top-mounting on the gland plate and enclosure frame
Material	Hard PVC Flame-resistant, self-extinguishing Temperature resistant to +60 °C Seal: PU foam Cross-section: 30 x 25 mm
Supply includes	Plug-in sections, incl. foam rubber clamp strip
Note	You will need two pieces per cable entry point. From an enclosure width of 1000 mm, the base assembly is divided into two sections in the width. Two cable entry points (left/right) may be used.
To fit	Enclosure type: VX: = 800 mm Enclosure type: VX SE Enclosure type: null Enclosure type: CX pedestal
Packs of	2 pc(s).
Weight/pack	0.31 kg
Customs tariff number	39269097
EAN	4028177922808
ETIM 7.0	EC002624
ECLASS 8.0	27189265