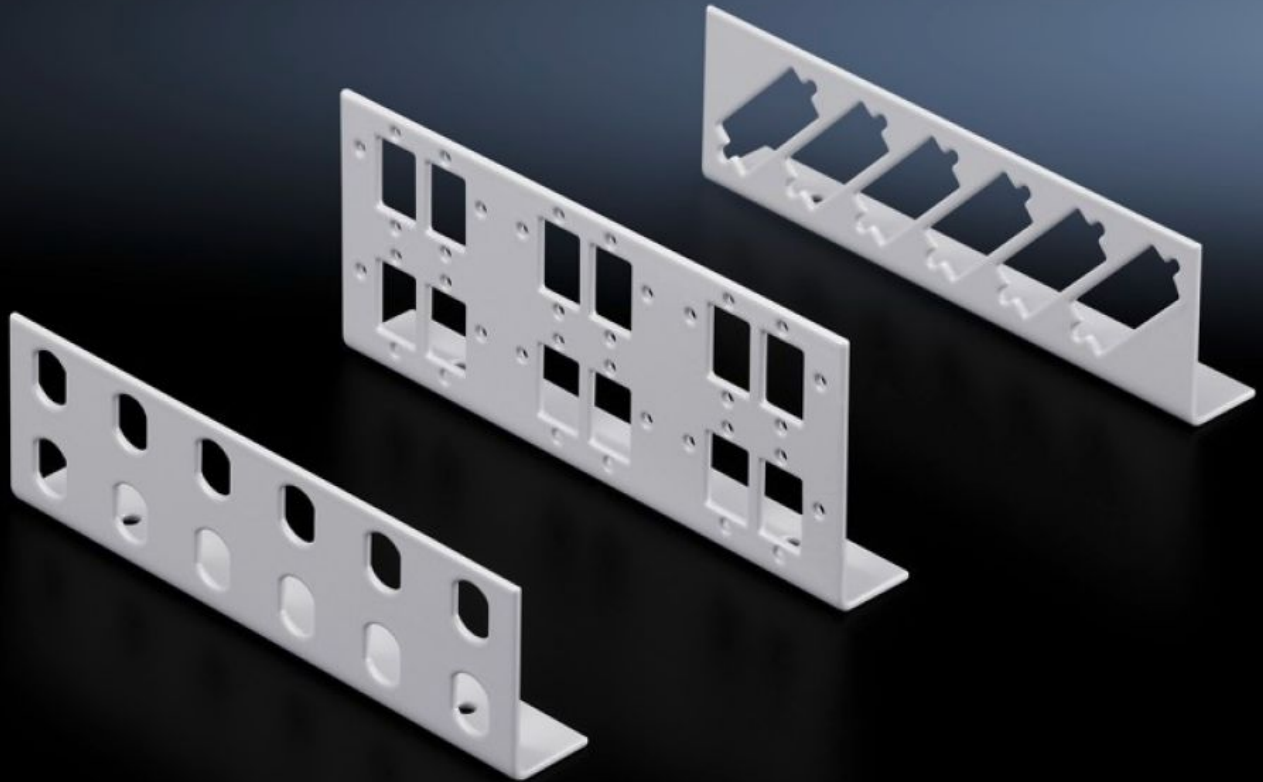


Rittal – The System.

Faster – better – everywhere.



DK 7463.200

Patch panels for small fibre-optic distributors

State: 19/10/2024 (Source: rittal.com/com-en)

ENCLOSURES

POWER DISTRIBUTION

CLIMATE CONTROL

IT INFRASTRUCTURE

SOFTWARE & SERVICES

FRIEDHELM LOH GROUP



DK 7463.200 - Patch panels for small fibre-optic distributors

Patch panel for small fibre optic distributors for ST, SC, E-2000 and E-2000 duplex couplings.

Features

Model No.	DK 7463.200
Product description	Various patch panels with different connector types are available for individual configuration of small fibre-optic distributors.
Material	Sheet steel
Colour	RAL 7035
Supply includes	Patch panel Assembly parts
Number of patch panels per enclosure (max.)	2
Basic material	Sheet steel
for fibre-optic coupling	SC duplex
Number of locations	Duplex: 6
Packs of	2 pc(s).
Weight/pack	0.148 kg
Net weight	0.09
Gross weight	0.148
PCF/PU (cradle-to-gate)	0.6 kg CO2 eq (Cat B)
Note on the PCF class	Category B: PCF value (cradle-to-gate) approximated based on product weight and self-declared
Customs tariff number	94039910
EAN	4028177187160
ETIM 7.0	EC001130
ECLASS 8.0	19170113

Tender text

SC patch panel for 7451

Material: Sheet steel, spray finished in RAL 7035