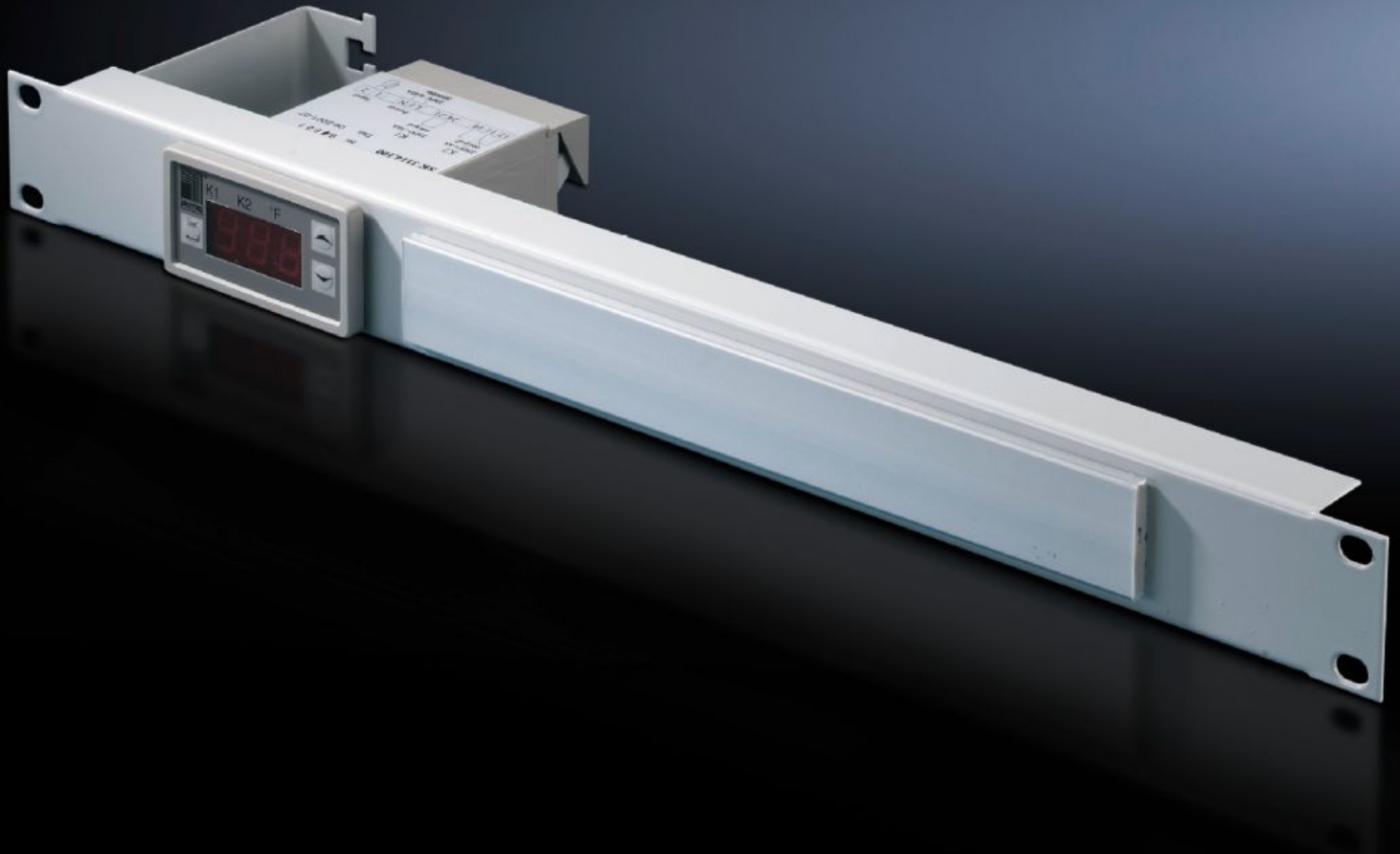


**Rittal – The System.**

Faster – better – everywhere.



**SK 7109.035**

**Digital enclosure internal  
temperature display and thermostat**

State: 19/10/2024 (Source: [rittal.com/com-en](http://rittal.com/com-en))

ENCLOSURES

POWER DISTRIBUTION

CLIMATE CONTROL

IT INFRASTRUCTURE

SOFTWARE & SERVICES

FRIEDHELM LOH GROUP



# SK 7109.035 - Digital enclosure internal temperature display and thermostat integrated into a patch panel 1 U

## Features

|                          |  |
|--------------------------|--|
| Model No.                | SK 7109.035  |
| Product description      | Including cable attachment for connection cable and label holder.  |
| Technical specifications | Three-digit, 7-segment display<br>Option of switching between °C/°F<br>Includes 1800 mm long NTC sensor<br>Two relay outputs as change-over contact and normally open contact (max. contact load 230 V, 6 A)<br>Freely selectable switching difference |
| Colour                   | RAL 7035   |
| Setting range            | 5 °C...55 °C   |
| Rated operating voltage  | 100 V - 230 V, 1~, 50 Hz/60 Hz<br>24 V - 60 V (DC)   |
| Packs of                 | 1 pc(s).   |
| Weight/pack              | 0.82 kg  |
| Net weight               | 0.72   |
| Gross weight             | 0.86   |
| Customs tariff number    | 94039910   |
| EAN                      | 4028177165649  |
| ETIM 8                   | EC004587   |
| ETIM 7.0                 | EC002014   |
| ECLASS 8.0               | 27210707   |

# Approvals

---

Certificates

EAC

## Tender text

Rittal patch panel with temperature display  
and thermostat, RAL 7035

Small dimensions

Depth: 100 mm

„The three-digit, 7-segment display is 13 mm high and  
easy to read

„can be switched between °C/°F

„The display can be used in temperatures ranging from  
+5°C to +55°C

„With 1800 mm long NTC sensor

Rated operating voltage: 100 - 230 V, 50/60 Hz und 24 - 60 V (DC),  
special voltages available on request.

„Two relay outputs used as change-over contacts (max.  
contact load 230V, 6A)

„Switching difference can be freely selected

„The freely adjustable setpoint values can be set via  
the membrane keyboard mounted at the front.

Setting range: +5°C to +55°C

„Display and switching accuracy  $\pm 2$  K

„Mounting cutout 68 x 33 mm

„Minimum and maximum recorded temperatures are saved  
until the next reset.

Material: Spray finished in RAL 7035