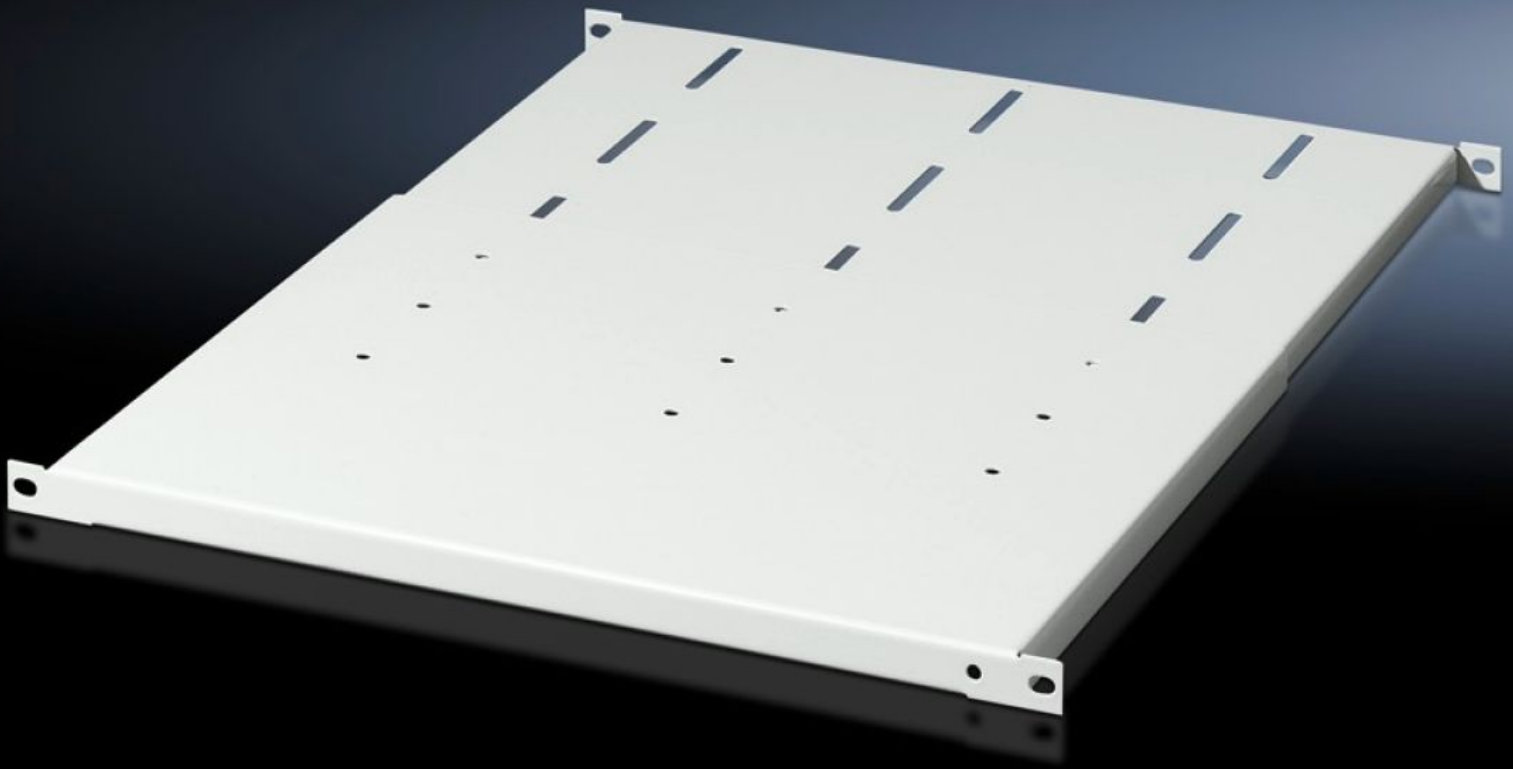


Rittal – The System.

Faster – better – everywhere.



DK 7063.720

**Component shelf ½ U, depth-
variable**

State: 21/07/2024 (Source: rittal.com/com-en)

ENCLOSURES

POWER DISTRIBUTION

CLIMATE CONTROL

IT INFRASTRUCTURE

SOFTWARE & SERVICES

FRIEDHELM LOH GROUP



DK 7063.720 - Component shelf ½ U, depth-variable 482.6 mm (19") system punchings

For mounting between the front and rear 482.6 mm (19") levels, infinitely depth-adjustable, load capacity: 50 kg.

Features

Model No.	DK 7063.720
Product description	For mounting between the front and rear 482.6 mm (19") levels. The component shelf is infinitely depth-adjustable.
Material	Sheet steel
Colour	RAL 7035
Load capacity	50 kg area load
Note	Not suitable for combination with telescopic slides.
Distance between levels	600 - 900 mm
Packs of	1 pc(s).
Weight/pack	7.65 kg
Customs tariff number	94039910
EAN	4028177401877
E-Number Sweden	E7239732
ETIM 7.0	EC002620
ECLASS 8.0	27189261

Tender text

Component shelf, 1/2 U, depth-adjustable for 482.6 mm
(19") mounting levels

Level clearance: 600 -900 mm

Load capacity: 50 kg surface load, static

Material: Sheet steel, spray finished in RAL 7035

Slide rail including assembly parts.

Dimensions: 700 mm

Material: Sheet steel, zinc-plated, passivated