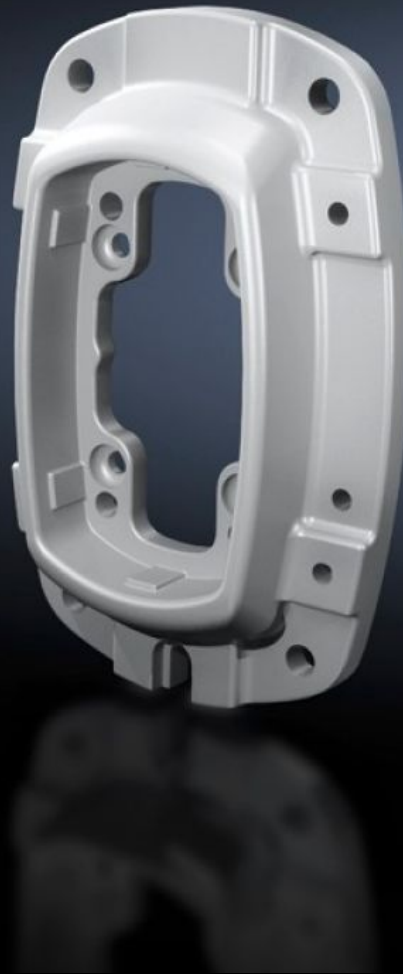


**Rittal – The System.**

Faster – better – everywhere.



**CP 6218.820**

**Wall/base mounting bracket CP  
180, small**

State: 19/10/2024 (Source: [rittal.com/com-en](http://rittal.com/com-en))

ENCLOSURES

POWER DISTRIBUTION

CLIMATE CONTROL

IT INFRASTRUCTURE

SOFTWARE & SERVICES

FRIEDHELM LOH GROUP



# CP 6218.820 - Wall/base mounting bracket CP 180, small

For rigid attachment of the support arm system to vertical or horizontal surfaces.

## Features

Model No.	CP 6218.820
Product description	For rigid attachment of the support arm system to vertical or horizontal surfaces.
Material	Wall/base mounting bracket: Cast steel
Colour	RAL 7035
Supply includes	Seals Adjusting screws Self-tapping screws for support section attachment
Rifid y/n	Yes
Packs of	1 pc(s).
Weight/pack	5 kg
Net weight	4.918
Gross weight	5.177
PCF/PU (cradle-to-gate)	19.1 kg CO2 eq (Cat B)
Note on the PCF class	Category B: PCF value (cradle-to-gate) approximated based on product weight and self-declared
Customs tariff number	73269098
EAN	4028177683884
ETIM 7.0	EC000882
ECLASS 8.0	27400556

## Approvals

# Approvals

---

Explanations

Manufacturer's declaration