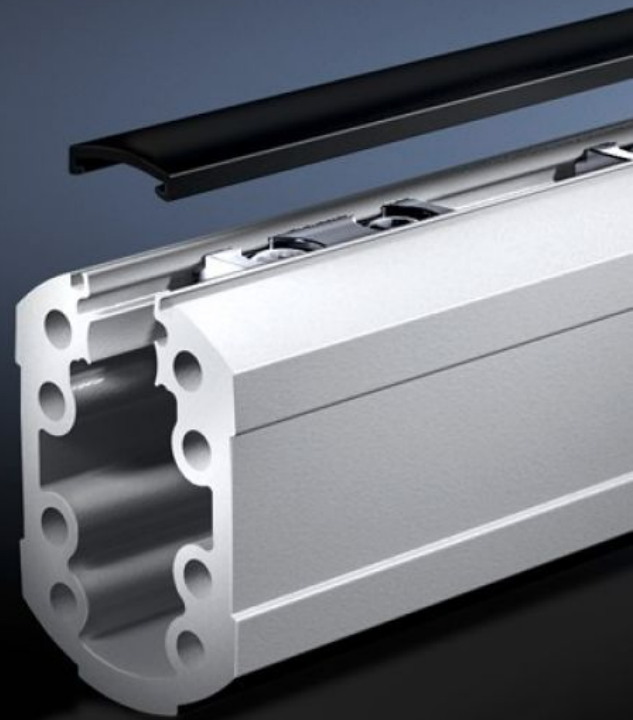


Rittal – The System.

Faster – better – everywhere.



CP 6206.110 Support section CP 60

State: 27/09/2024 (Source: rittal.com/com-en)

ENCLOSURES

POWER DISTRIBUTION

CLIMATE CONTROL

IT INFRASTRUCTURE

SOFTWARE & SERVICES

FRIEDHELM LOH GROUP



CP 6206.110 - Support section CP 60 Open

Attachment to the connection components with 4 self-tapping screws in the screw channel. May be cut to any required length, no thread-tapping required. Open cable duct for easy servicing access and for pre-assembled cables with connectors, lockable via cover section. With clamping elements for higher load capacity.

Features

| | |
|-----------------------|---|
| Model No. | CP 6206.110 |
| Product description | Attachment to the connection components with 4 self-tapping screws in the screw channel. May be cut to any required length, no thread-tapping required. Open cable duct for easy servicing access and for pre-assembled cables with connectors, lockable via cover section. |
| Material | Support section: Extruded aluminium section Clamping elements: Steel Cover section: Plastic |
| Colour | Support section: RAL 7035 Cover: RAL 7024 |
| Supply includes | Support section Clamping elements for stability Clip-in lid |
| Length | 1,000 mm |
| Dimensions | Length: 1,000 mm |
| Packs of | 1 pc(s). |
| Weight/pack | 5.6 kg |
| Net weight | 5.5 |
| Gross weight | 5.62 |
| Customs tariff number | 76042990 |
| EAN | 4028177701915 |
| ETIM 7.0 | EC000882 |

Features

ECLASS 8.0

27400556