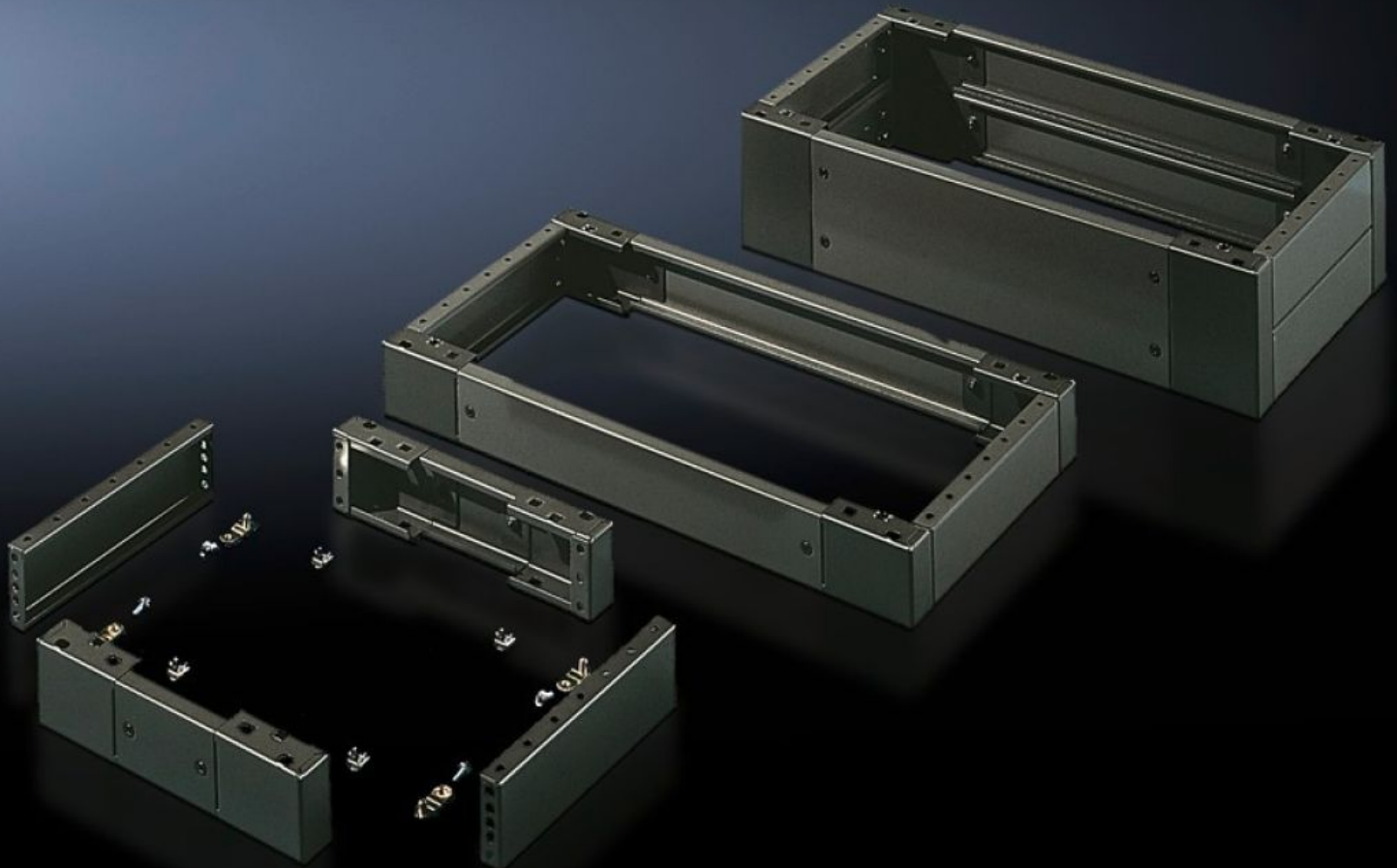


# Rittal – The System.

Faster – better – everywhere.



## SO 2816.200 Base/plinth, complete

State: 19/10/2024 (Source: [rittal.com/com-en](http://rittal.com/com-en))

ENCLOSURES

POWER DISTRIBUTION

CLIMATE CONTROL

IT INFRASTRUCTURE

SOFTWARE & SERVICES

FRIEDHELM LOH GROUP



# SO 2816.200 - Base/plinth, complete Sheet steel, for AE, universal consoles TP

Trim panels at the front and rear with fitted corner pieces and side trim panels.

## Features

Model No.	SO 2816.200
Product description	Trim panels at the front and rear with fitted corner pieces and side trim panels.
Material	Sheet steel
Surface finish	Spray-finished
Colour	RAL 7022
Supply includes	4 corner pieces 2 trim panels front/rear 2 trim panels, side Assembly parts for mounting on the enclosure 2 trim panels front/rear 2 trim panels, side, x 100 mm
Dimensions	Height: 100 mm Depth: 279 mm
To fit	Enclosure type: AE Width: = 600 mm Depth: = 300 mm
Packs of	1 pc(s).
Weight/pack	6.6 kg
Net weight	5.1
Gross weight	5.321
Customs tariff number	94039910
EAN	4028177032828
ETIM 8	EC000721

# Features

---

ETIM 7.0	EC000721
----------	----------

---

ECLASS 8.0	27182003
------------	----------