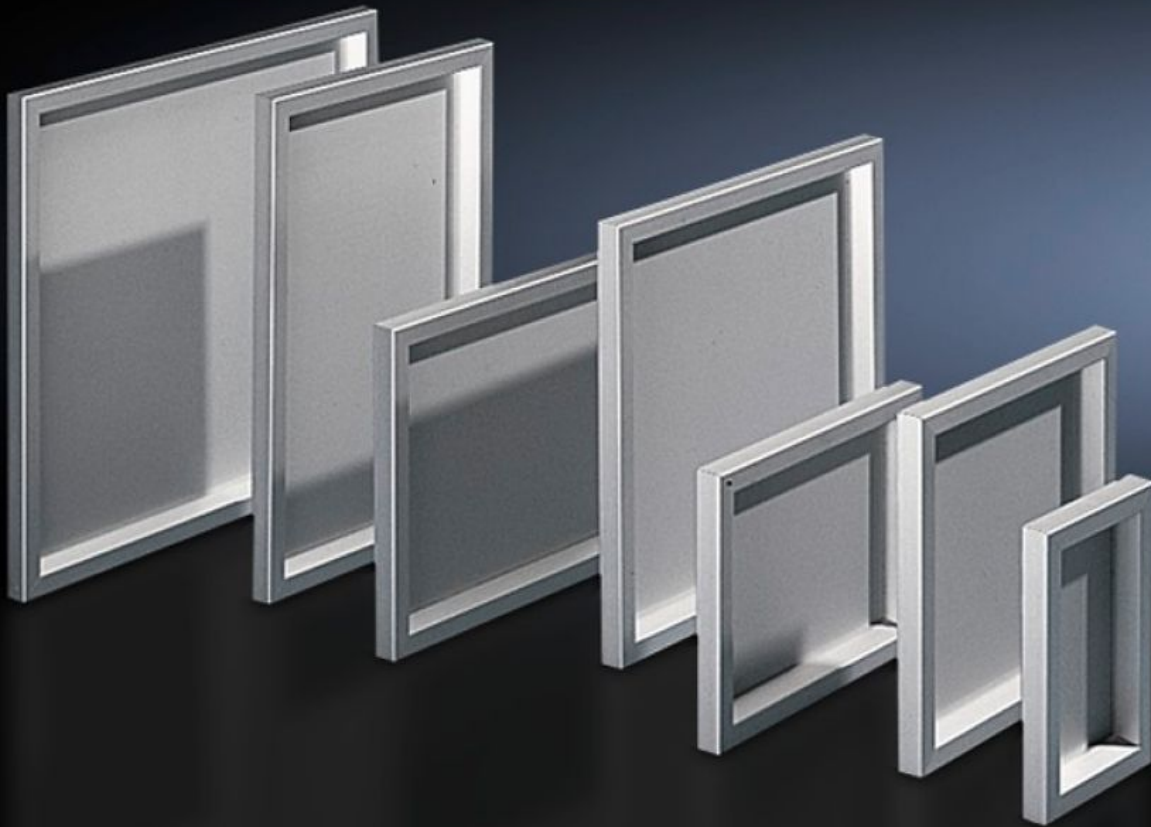
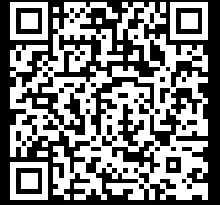


Rittal – The System.

Faster – better – everywhere.



FT 2745.000 Operating panel

State: 07/10/2024 (Source: rittal.com/com-en)

ENCLOSURES

POWER DISTRIBUTION

CLIMATE CONTROL

IT INFRASTRUCTURE

SOFTWARE & SERVICES

FRIEDHELM LOH GROUP



FT 2745.000 - Operating panel for AE

For external mounting on an AE instead of a door and on surfaces. Frame construction with corner connectors on the inside, 3 mm aluminium plate secured from the inside and sealed against the frame.



Features

Model No.	FT 2745.000
Product description	For external mounting on an AE instead of a door and on surfaces. Frame construction with corner connectors on the inside, 3 mm aluminium plate secured from the inside and sealed against the frame.
Material	Aluminium, natural anodised
Supply includes	Aluminium frame Display panel Hinges Brackets
Protection category to IEC 60 529	IP 54
Note	When installing instead of a door, the cam lock is required
To fit	Enclosure type: AE Width: = 500 mm Height: = 500 mm
Dimensions	Width: 497 mm Height: 497 mm Depth: 34 mm

Features

Dimensions of aluminium plate	Width: 443 mm Height: 443 mm
Area available for population	Width: 427 mm Height: 427 mm
Packs of	1 pc(s).
Weight/pack	3.6 kg
Net weight	3.343
Gross weight	3.543
Customs tariff number	76169990
EAN	4028177031937
E-Number Sweden	E3404525
ETIM 8	EC000747
ETIM 7.0	EC000747
ECLASS 8.0	27182204