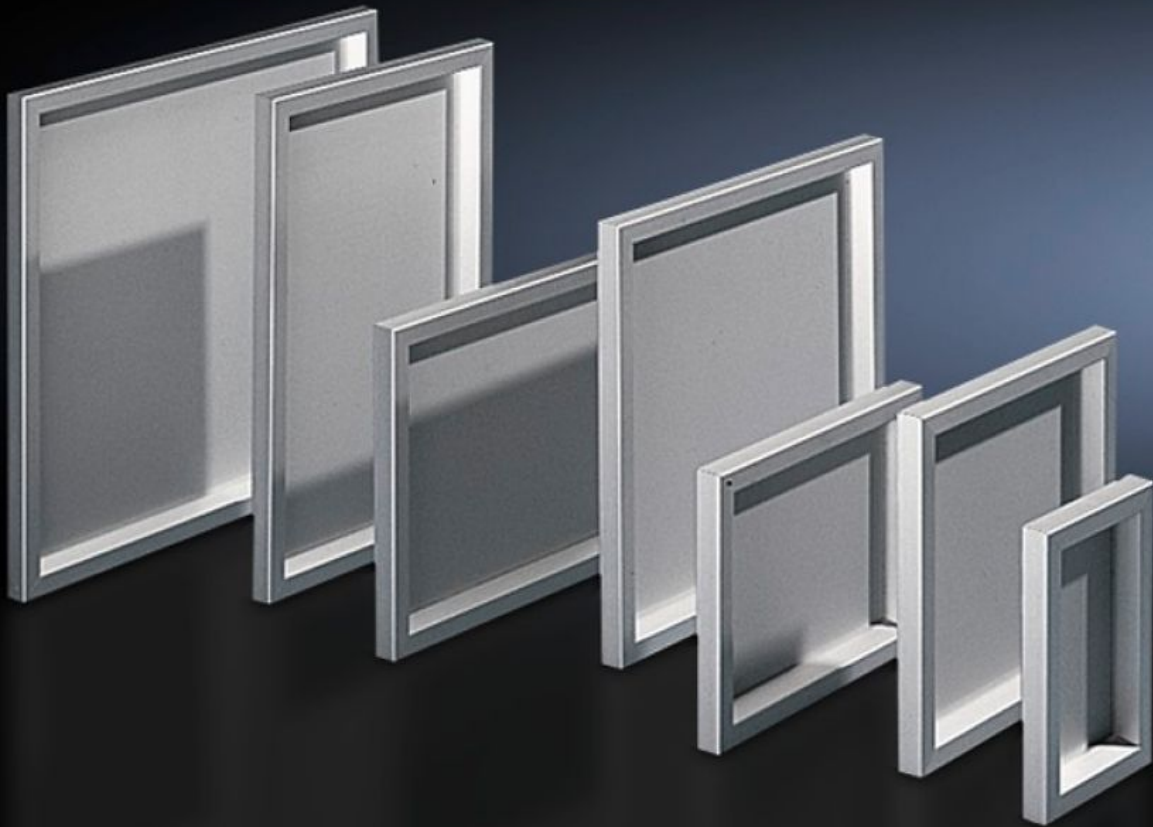


Rittal – The System.

Faster – better – everywhere.



FT 2740.000 Operating panel

State: 07/10/2024 (Source: rittal.com/com-en)

ENCLOSURES

POWER DISTRIBUTION

CLIMATE CONTROL

IT INFRASTRUCTURE

SOFTWARE & SERVICES

FRIEDHELM LOH GROUP



FT 2740.000 - Operating panel for AE

For external mounting on an AE instead of a door and on surfaces. Frame construction with corner connectors on the inside, 3 mm aluminium plate secured from the inside and sealed against the frame.



Features

Model No.	FT 2740.000
Product description	For external mounting on an AE instead of a door and on surfaces. Frame construction with corner connectors on the inside, 3 mm aluminium plate secured from the inside and sealed against the frame.
Material	Aluminium, natural anodised
Supply includes	Aluminium frame Display panel Hinges Brackets
Protection category to IEC 60 529	IP 54
Note	When installing instead of a door, the cam lock is required
To fit	Enclosure type: AE Width: = 200 mm Height: = 300 mm
Dimensions	Width: 197 mm Height: 297 mm Depth: 34 mm

Features

Dimensions of aluminium plate	Width: 143 mm Height: 243 mm
Area available for population	Width: 127 mm Height: 227 mm
Note on Model No.	With AE, only for use on the rear panel
Packs of	1 pc(s).
Weight/pack	1.7 kg
Net weight	1.237
Gross weight	1.42
Customs tariff number	76169990
EAN	4028177031838
E-Number Sweden	E3404521
ETIM 8	EC000747
ETIM 7.0	EC000747
ECLASS 8.0	27182204