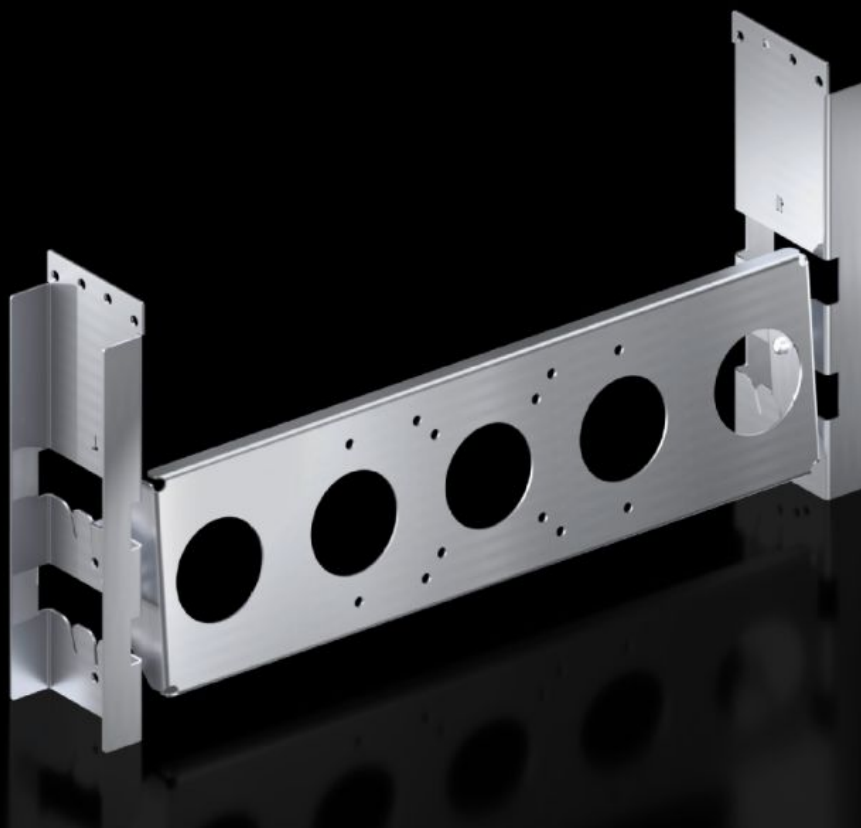


Rittal – The System.

Faster – better – everywhere.



SM 2383.060 Monitor bracket

State: 13/07/2024 (Source: rittal.com/com-en)

ENCLOSURES

POWER DISTRIBUTION

CLIMATE CONTROL

IT INFRASTRUCTURE

SOFTWARE & SERVICES

FRIEDHELM LOH GROUP



SM 2383.060 - Monitor bracket

Suitable for the mounting of monitors up to 21" with VESA MIS-D or MIS-E connections. Variable mounting in the depth allows individual positioning of the monitor for ergonomic comfort. In addition, there are three setting options (+10°/0°/-20°) for ergonomic adjustment of the tilt angle.

Features

Model No.	SM 2383.060
Design	with VESA MIS-D, MIS-E connection
Material	Sheet steel, 2 mm
Surface finish	Zinc-plated
Supply includes	1 monitor bracket 2 angle brackets Assembly parts
Note	Adaptor rail for VX compatibility is required for mounting via VX punched sections with mounting flange in VX SE, PC
Installation options	For direct mounting on the enclosure sections in 600 mm wide enclosures Mounting in 800 mm wide enclosures only in conjunction with punched sections with mounting flanges
To fit	Enclosure type: VX: = 600 mm Enclosure type: TS: = 800 mm Enclosure type: VX SE Enclosure type: PC
Packs of	1 pc(s).
Weight/pack	2.58 kg
Customs tariff number	73269098
EAN	4028177966543
ETIM 8	EC002620
ETIM 7.0	EC002620
ECLASS 8.0	27189261