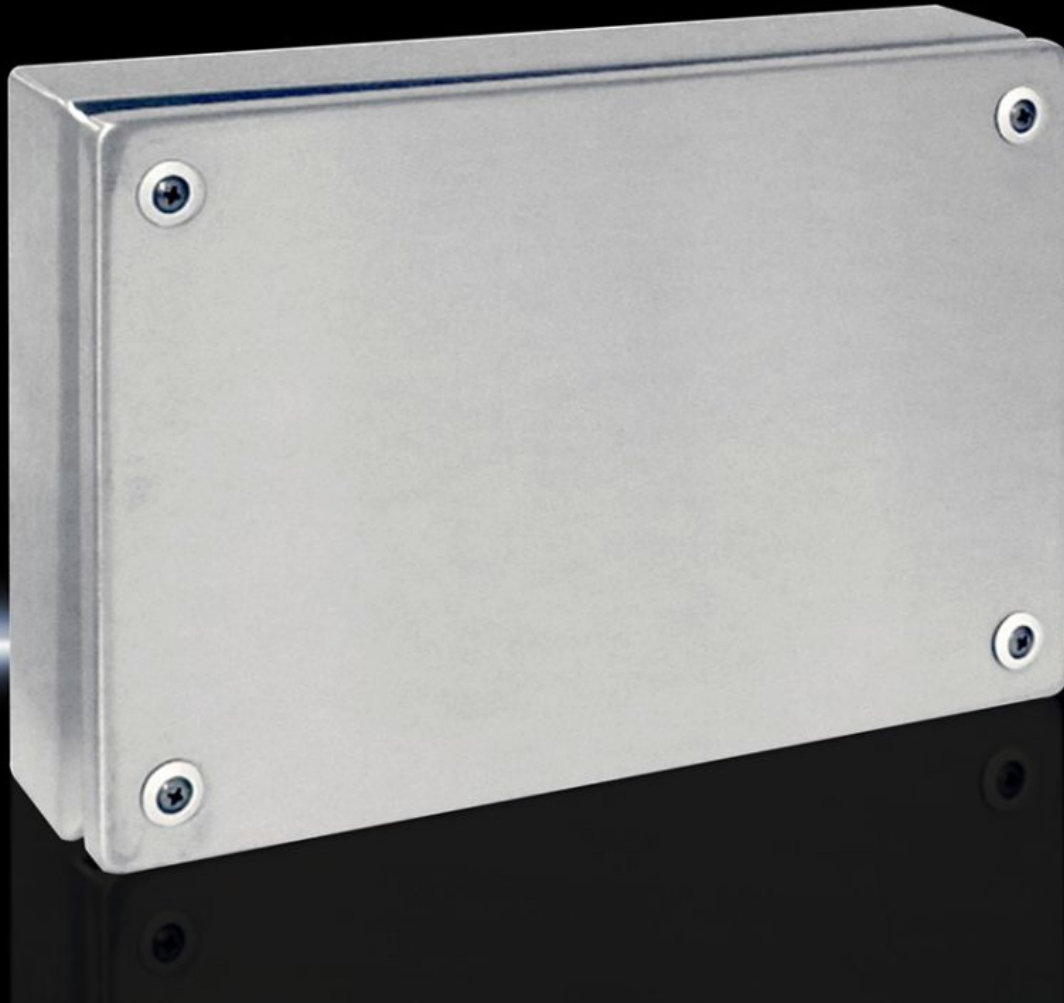
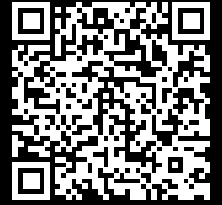


Rittal – The System.

Faster – better – everywhere.



KL 1524.010

Terminal boxes KL

State: 26/09/2024 (Source: rittal.com/com-en)

ENCLOSURES

POWER DISTRIBUTION

CLIMATE CONTROL

IT INFRASTRUCTURE

SOFTWARE & SERVICES

FRIEDHELM LOH GROUP



KL 1524.010 - Terminal boxes KL Stainless steel

Terminal boxes, stainless steel 1.4301 (AISI 304), Protection category IP 66.

Features

Model No.	KL 1524.010
Material	Enclosure: Stainless steel 1.4301 (AISI 304) Cover: Stainless steel 1.4301 (AISI 304), all-round foamed-in PU seal
Surface finish	Enclosure and cover: Brushed, grain 180
Supply includes	Enclosure with cover Quick-release fastener including plastic bushes
Protection category NEMA	NEMA 4X
Protection category to IEC 60 529	IP 66
IK Code	IK08
Dimensions	Width: 300 mm Height: 200 mm Depth: 80 mm
Material thickness - cover	1.25 mm
Material thickness - enclosure	1.25 mm
Lock	Number of locks: 4
Basic material	Stainless steel 1.4301 (AISI 304)
Packs of	1 pc(s).
Weight/pack	2.4 kg
Net weight	2.15
Gross weight	2.28
Customs tariff number	84879090
EAN	4028177008502
E-Number Sweden	E3404366
ETIM 8	EC000261

Features

ETIM 7.0	EC000261
ECLASS 8.0	27180101

Approvals

Approvals	Bureau Veritas DNV-GL Lloyds Register of Shipping UL + C-UL (listed)
Explanations	Declaration of conformity Declaration of conformity UK

Tender text

Stainless steel terminal box without gland plate, protection cat. IP 66

Enclosure:
of 1.25 mm stainless steel 1.4301 (AISI 304), folded and welded from a single piece, with all-round protection channel on the cover aperture. Cover of 1.25 mm stainless steel, sealed, with foamed-in special cover seal, facilities for connecting PE conductors in the cover and box, profile strips on both internal sides with mounting holes. Special plastic bush guards against accidental loss of the cover screws and provides screwdriver guidance.

Accessories:
quick-release fastener, cover retainer, plastic cable gland plate, cover hinges, mounting plate

Surface finish:
brushed

Dimensions (W x H x D): 300 x 200 x 80 mm