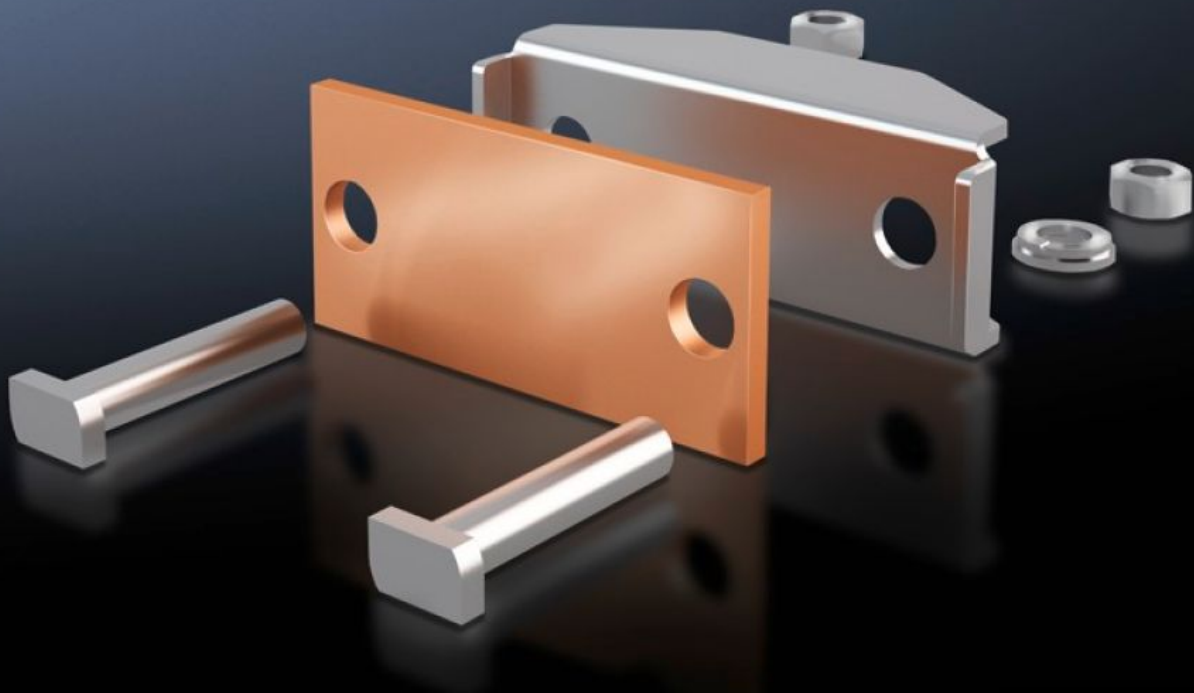


Rittal – The System.

Faster – better – everywhere.



SV 9640.350 Connection Plate

State: 2024-09-27 (Source: [rittal.com/ca-en](https://www.rittal.com/ca-en))

ENCLOSURES

POWER DISTRIBUTION

CLIMATE CONTROL

IT INFRASTRUCTURE

SOFTWARE & SERVICES

FRIEDHELM LOH GROUP



SV 9640.350 - Connection Plate for laminated copper bars

For the connection of laminated copper bars.

Features

Model No.	SV 9640.350
Product description	For the connection of laminated copper bars.
Material	Connection plate: E-Cu Pressure piece: Stainless steel
Supply includes	Assembly components
Suitable for busbars	Maxi-PLS 45 S/45
Clamping area for laminated copper bars (W x H)	100 x 20 mm
Packaging unit	3 pc(s).
Weight/packaging unit	1.959 kg
Net weight	1.659
Gross weight	1.96
Copper weight (kg per piece)	0.27
Customs tariff number	85369010
EAN	4028177238695
ETIM 7.0	EC002498
ECLASS 8.0	27379201

Approvals

Approvals	UL + C-UL (listed)
Explanations	Declaration of conformity Declaration of conformity UK