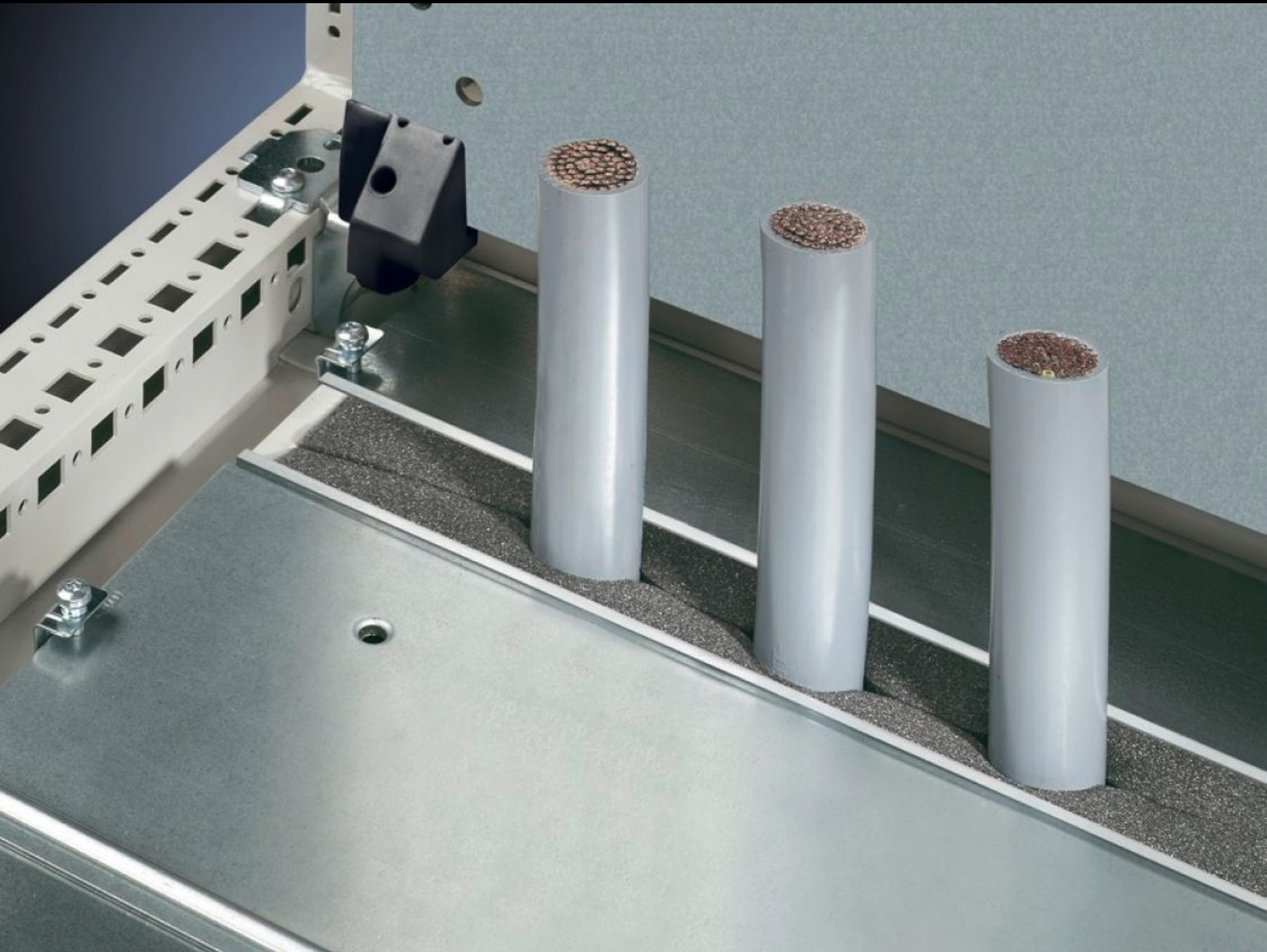


Rittal – The System.

Faster – better – everywhere.



TS 8802.160

Section for cable entry, center

State: 2024-09-27 (Source: [rittal.com/ca-en](https://www.rittal.com/ca-en))

ENCLOSURES

POWER DISTRIBUTION

CLIMATE CONTROL

IT INFRASTRUCTURE

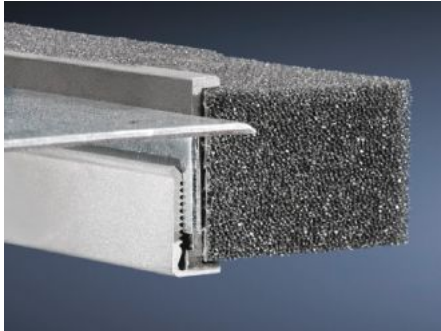
SOFTWARE & SERVICES

FRIEDHELM LOH GROUP



TS 8802.160 - Section for cable entry, center for TS, TP

Inserted in base plate.



Features

Model No.	TS 8802.160
Product description	To seal the cable entry between the base plates.
Benefits	Particularly well-suited to cables with identical cross-sections
Technical specifications	Foam rubber cable clamping profile: Cross-section: 30 x 25 mm
Applications	For top-mounting on base plates
Material	Extruded aluminum section Foam rubber cable clamping profile: PU foam
Supply includes	Plug-in sections, incl. foam rubber clamp strip
Note	2 pc(s). are sufficient for one base opening up to an enclosure width of 800 mm From an enclosure width of 1,000 mm, two base openings are provided. 4 units per enclosure may be fitted
Suitable for	Enclosure type: TS: = 1,600 mm Enclosure type: TP
Protection category IP to IEC 60529	IP 55 if correctly installed
Packaging unit	4 pc(s).
Weight/packaging unit	0.618 kg
Net weight	0.592
Gross weight	0.6

Features

Customs tariff number	73269098
EAN	4028177556829
ETIM 7.0	EC000211
ECLASS 8.0	27142421