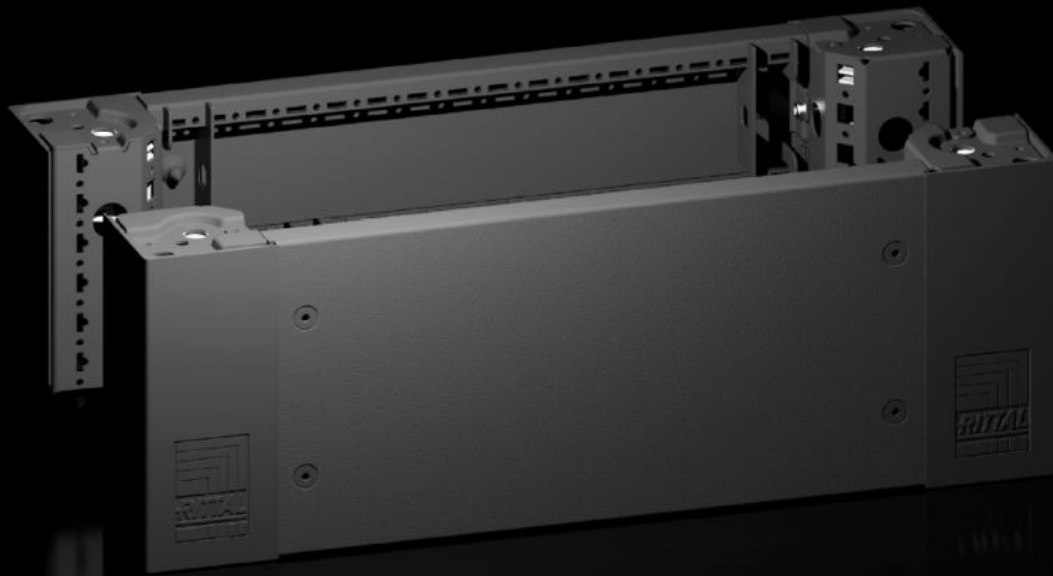


Rittal – The System.

Faster – better – everywhere.



VX 8640.022

**Base/plinth corner pieces with
base/plinth trim panels, front and
rear, 200 mm**

State: 2024-10-19 (Source: [rittal.com/ca-en](https://www.rittal.com/ca-en))

ENCLOSURES

POWER DISTRIBUTION

CLIMATE CONTROL

IT INFRASTRUCTURE

SOFTWARE & SERVICES

FRIEDHELM LOH GROUP



VX 8640.022 - Base/plinth corner pieces with base/plinth trim panels, front and rear, 200 mm for VX, VX IT, VX SE, TE, TS, TS IT, TP, PC, IW

Heavy-duty preformed base/plinth corner pieces that self-position on the enclosure, can be used with or without base/plinth trim panel, depending on the application. Large openings in the base/plinth corner piece for optimal access to the screwing point, can be covered using plastic bay and corner covers.

Features

Model No.	VX 8640.022
Product description	Heavy-duty base/plinth corner pieces with molded self-positioning to the enclosure, can be used with or without trim panels depending on the application. Large openings in the base/plinth corner piece for optimal access to the screw-fastening point, can be concealed with a plastic corner and baying cover.
Material	Base/plinth corner piece: Carbon steel Base/plinth trims: Carbon steel Corner and baying covers: Plastic
Color	RAL 9005
Supply includes	4 x base/plinth corner pieces, 200 mm high 4 x corner covers 1 x baying cover 1 base/plinth trim panel, front/rear, 200 mm 2 x base/plinth trim panels, front/rear, 100 mm high Assembly components
Note	Base/plinth trim panels, on the side for closing off a base/plinth unit, for additional stabilization of the bases/plinths to one another, or for interior installation of the bases/plinths
Dimensions	Height: 200 mm
Suitable for	Width: = 600 mm
Type rating according to UL 50E	Type 1 Type 12

Features

Weight/packaging unit	7.84 kg
Packaging unit	2 pc(s).
Net weight	6.64
Gross weight	7.8
Customs tariff number	94039910
EAN	4028177958869
E-Number Sweden	E3465370
ETIM 8	EC000721
ETIM 7.0	EC000721
ECLASS 8.0	27182003

Approvals

Approvals	UL + C-UL - FTTA
-----------	------------------