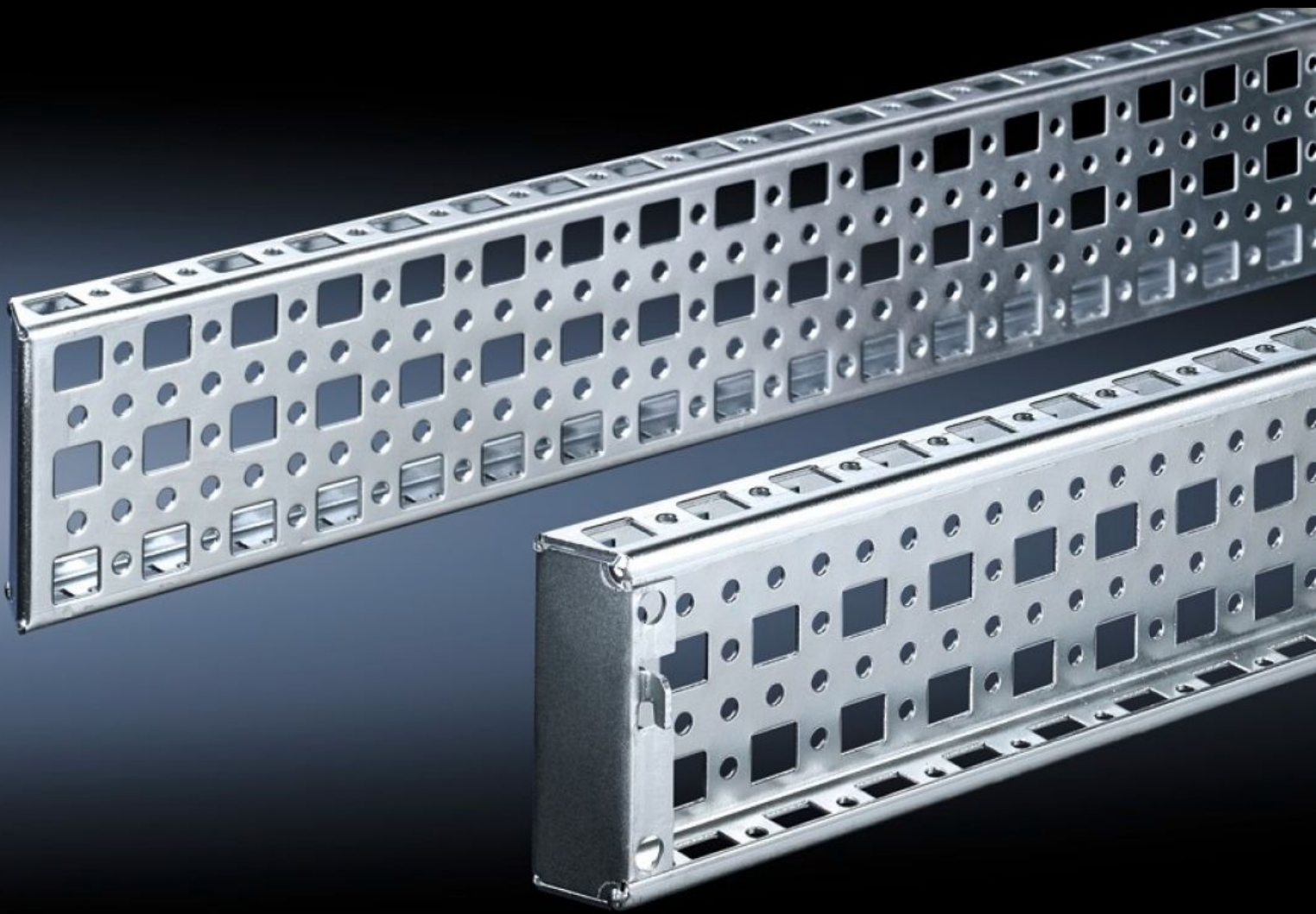


Rittal – The System.

Faster – better – everywhere.



TS 8612.520

TS System Chassis 23 x 73 mm

State: 2024-09-27 (Source: [rittal.com/ca-en](https://www.rittal.com/ca-en))

ENCLOSURES

POWER DISTRIBUTION

CLIMATE CONTROL

IT INFRASTRUCTURE

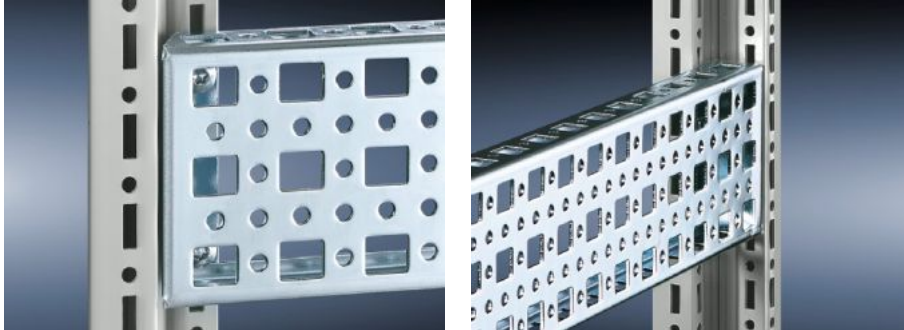
SOFTWARE & SERVICES

FRIEDHELM LOH GROUP



TS 8612.520 - TS System Chassis 23 x 73 mm

The alternative to the TS 17 x 73 mm system chassis, with punchings for captive nuts/speed nuts instead of slotted holes top and bottom. Simply locate and secure.



Features

| | |
|-----------------------|--|
| Model No. | TS 8612.520 |
| Product description | The alternative to the TS 17 x 73 mm system chassis, with punchings for captive nuts/speed nuts instead of slotted holes top and bottom. Simply locate and secure. |
| Material | Carbon steel |
| Surface finish | Zinc-plated |
| Supply includes | Assembly screws |
| Installation options | On the vertical TS, VX SE enclosure section |
| Suitable for | Enclosure type: the inner mounting level Suitable for width/depth: 1,200 mm |
| Packaging unit | 4 pc(s). |
| Weight/packaging unit | 5.396 kg |
| Net weight | 5.128 |
| Gross weight | 5.396 |
| Customs tariff number | 73269098 |
| EAN | 4028177370555 |
| ETIM 7.0 | EC002625 |
| ECLASS 8.0 | 27189234 |