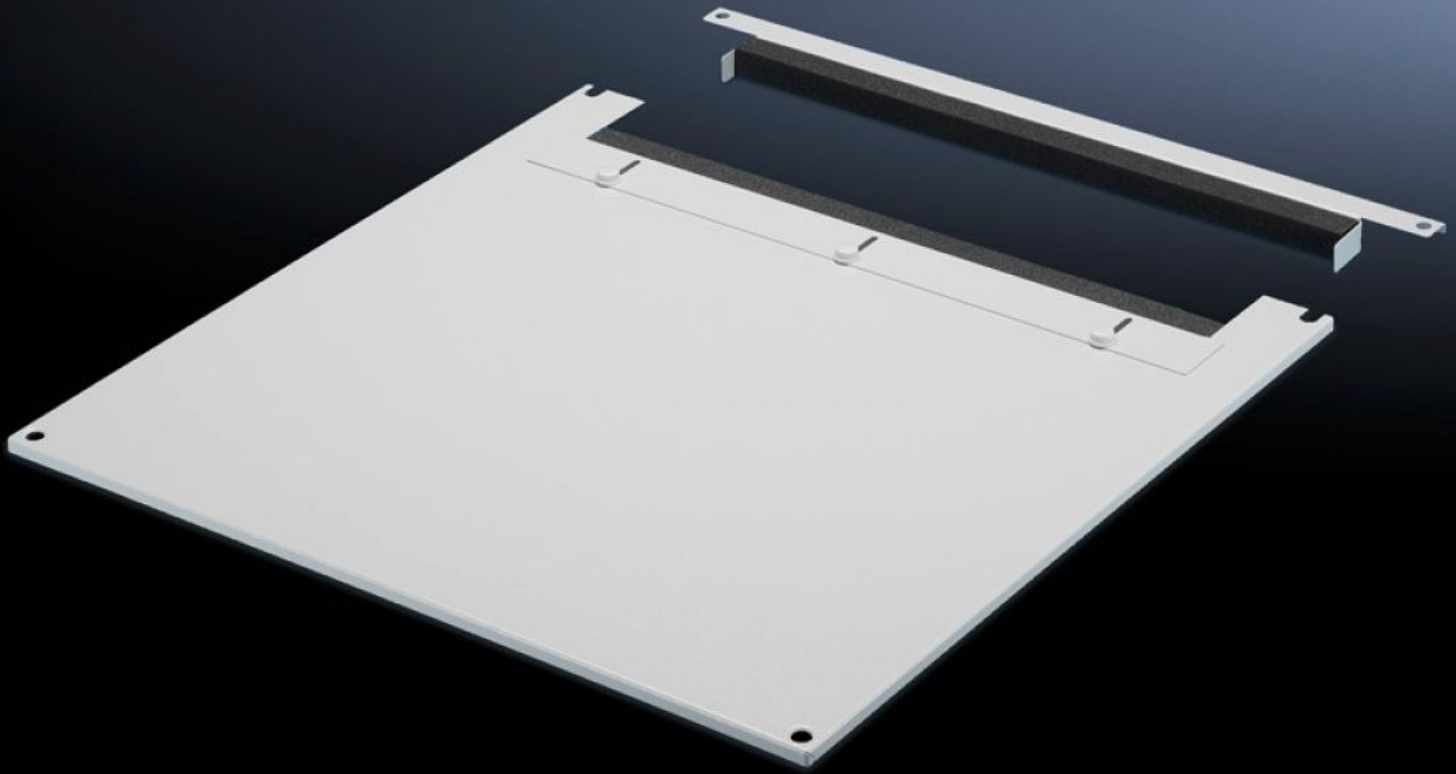


**Rittal – The System.**

Faster – better – everywhere.



**TS 7826.665**

**Roof plate for cable entry, two-piece**

State: 2024-10-19 (Source: [rittal.com/ca-en](https://www.rittal.com/ca-en))

ENCLOSURES

POWER DISTRIBUTION

CLIMATE CONTROL

IT INFRASTRUCTURE

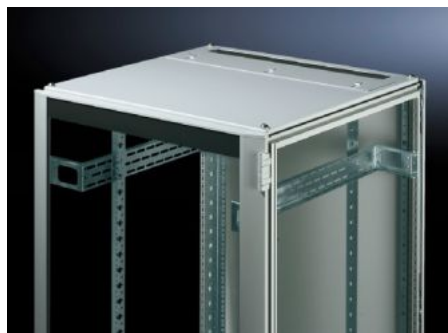
SOFTWARE & SERVICES

FRIEDHELM LOH GROUP



# TS 7826.665 - Roof plate for cable entry, two-piece for VX, VX IT, TS, TS IT

The two-piece design additionally allows for easy retro-fitting, by simply removing the front part of the plate for retrospective cable entry.



## Features

Model No.	TS 7826.665
Product description	To replace standard roof. Fitted with a sliding bracket at the rear. Rubber clamping profile on both sides to secure cable bundles and wiring harnesses. The symmetrical design of the frame allows for cable entry from the side by rotating the roof plate. The two-piece design allows for easy retro-fitting.
Material	Carbon steel
Color	RAL 7035
Suitable for	Width: 600 mm Depth: 600 mm
Packaging unit	1 pc(s).
Weight/packaging unit	5.406 kg
Net weight	5.136
Gross weight	5.38
Customs tariff number	94039910
EAN	4028177390225
E-Number Sweden	E7239737

# Features

---

ETIM 7.0	EC000744
----------	----------

---

ECLASS 8.0	27182405
------------	----------