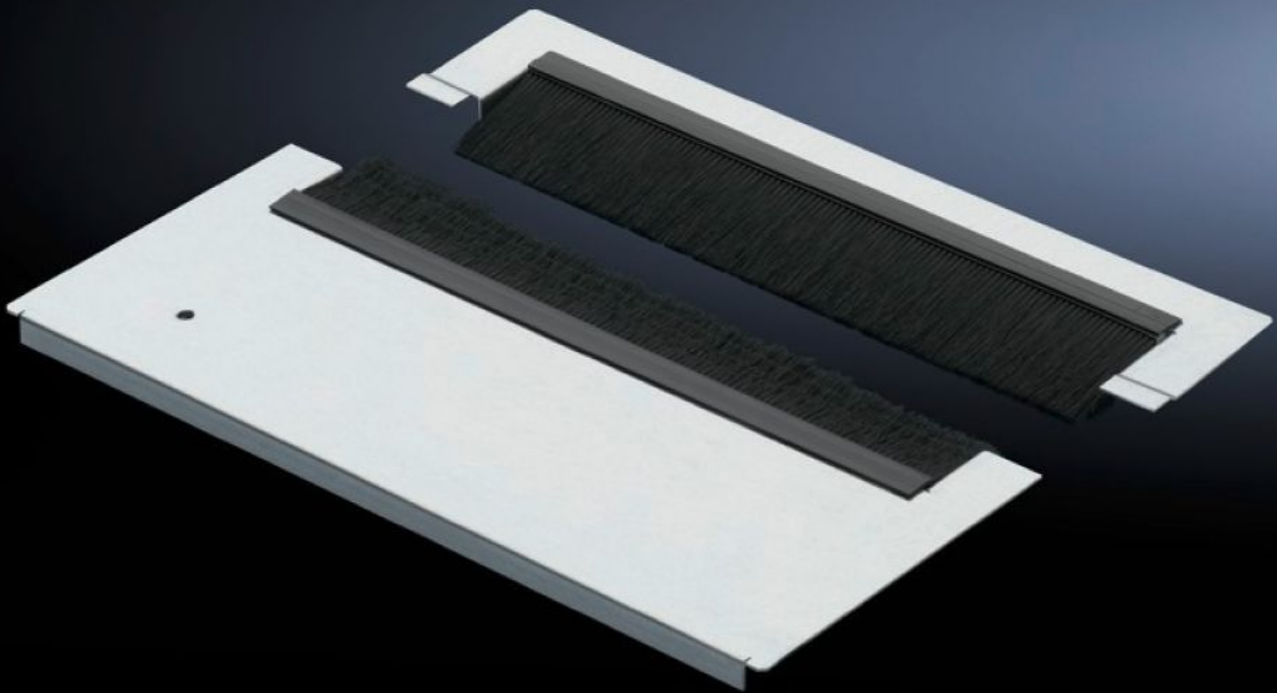


**Rittal – The System.**

Faster – better – everywhere.



**TS 7825.387**

**Base modules for cable entry**

State: 2024-10-19 (Source: [rittal.com/ca-en](https://www.rittal.com/ca-en))

ENCLOSURES

POWER DISTRIBUTION

CLIMATE CONTROL

IT INFRASTRUCTURE

SOFTWARE & SERVICES

FRIEDHELM LOH GROUP



# TS 7825.387 - Base modules for cable entry for TS, TS IT, VX SE

The two-part base module has a special cable entry with alternate offset brush strips, providing an excellent seal even with large numbers of cables.



## Features

Model No.	TS 7825.387
Version	Cable entry with brush strip, super-airtight
Product description	Special brush strips with alternate offset brushes for optimum protection of correct cable entry. The two-piece design even allows retrospective fitting of the base module with the cables already installed.
Material	Module plate: Carbon steel Brush strip: Plastic, UL 94-HB, halogen-free
Surface finish	Module plate: Zinc-plated
Supply includes	Assembly components Including clips
Note	Several base plate modules need to be combined to close off the base completely in the TS-IT
Dimensions	Depth: 237.5 mm
Suitable for	Enclosure type: TS TS IT SE Width: 800 mm
Packaging unit	1 pc(s).

# Features

---

Weight/packaging unit	2.011 kg
Net weight	1.811
Gross weight	1.9
Customs tariff number	73269098
EAN	4028177551169
ETIM 7.0	EC002620
ECLASS 8.0	27189261