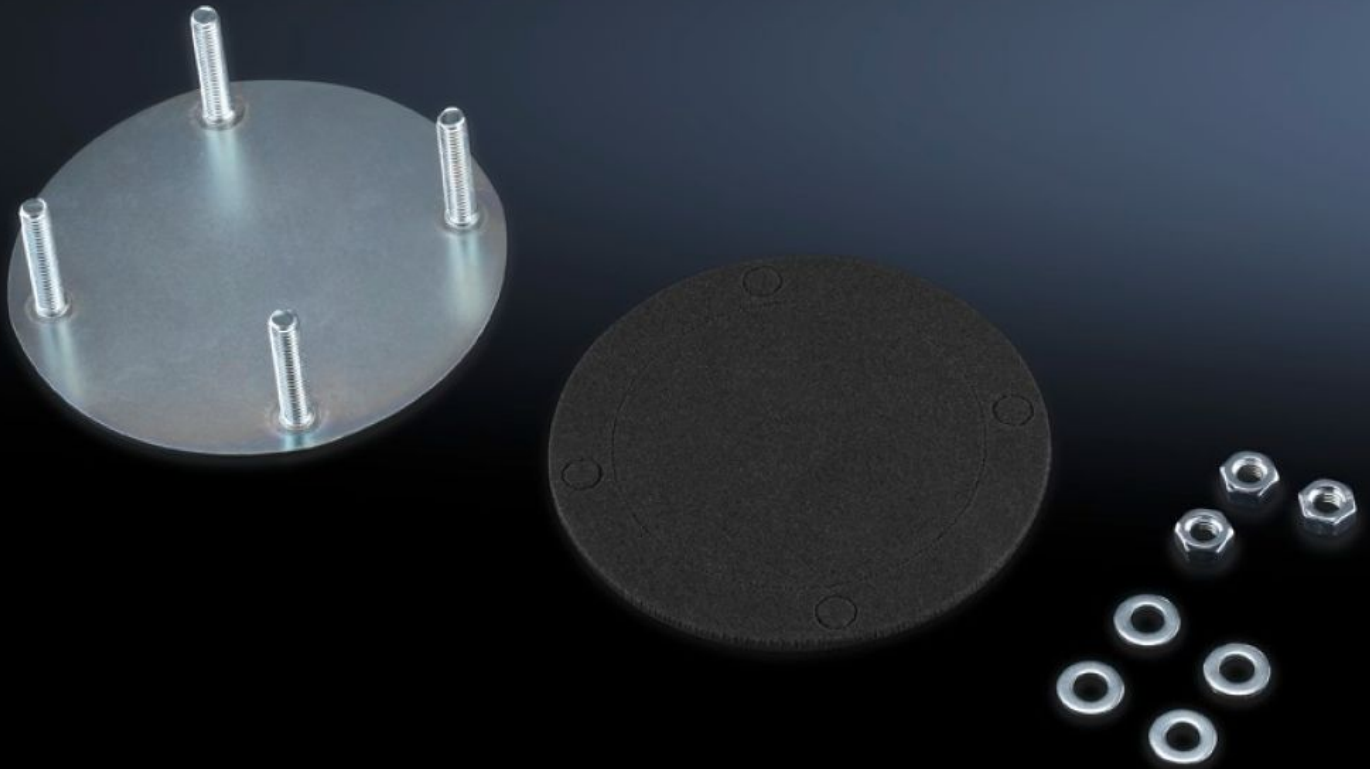


Rittal – The System.

Faster – better – everywhere.



CP 6505.500 Cover plate

State: 2024-10-19 (Source: [rittal.com/ca-en](https://www.rittal.com/ca-en))

ENCLOSURES

POWER DISTRIBUTION

CLIMATE CONTROL

IT INFRASTRUCTURE

SOFTWARE & SERVICES

FRIEDHELM LOH GROUP



CP 6505.500 - Cover plate for support arm connection

Features

Model No.	CP 6505.500
Product description	To securely lock an unused support arm connection in the housing
Material	Carbon steel
Surface finish	Zinc plated, clear-chromated
Supply includes	Seal and assembly components
Suitable for support arm connection	Ø 130 mm
Note	If there are already 2 support arm cut-outs provided with the Comfort Panel, Optipanel and Compact Panel command panels, a cover plate is included with the supply of the housing.
Packaging unit	1 pc(s).
Weight/packaging unit	0.14 kg
Net weight	0.13
Gross weight	0.133
PCF/PU (cradle-to-gate)	0.5 kg CO2 eq (Cat B)
Note on the PCF class	Category B: PCF value (cradle-to-gate) approximated based on product weight and self-declared
Customs tariff number	94039910
EAN	4028177205895
ETIM 7.0	EC000456
ECLASS 8.0	27189263