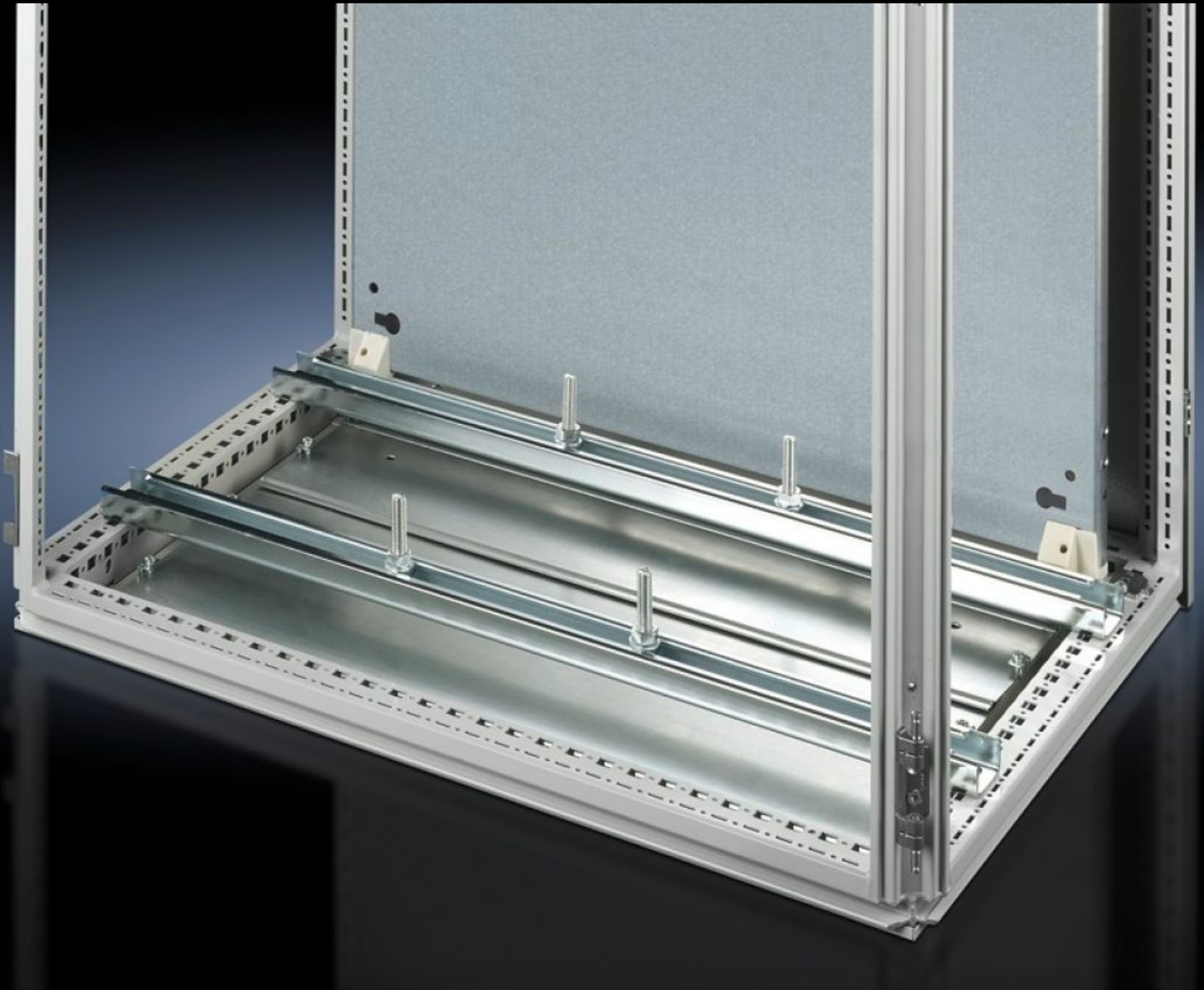


Rittal – The System.

Faster – better – everywhere.



SZ 4363.000

System Support Rails

State: 2024-09-27 (Source: [rittal.com/ca-en](https://www.rittal.com/ca-en))

ENCLOSURES

POWER DISTRIBUTION

CLIMATE CONTROL

IT INFRASTRUCTURE

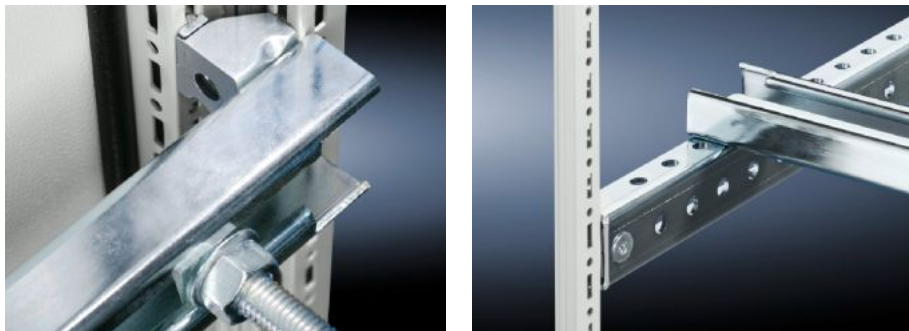
SOFTWARE & SERVICES

FRIEDHELM LOH GROUP



SZ 4363.000 - System Support Rails

For heavy installed equipment such as transformers. T-head screw and slot in the support rail accommodate all mounting dimensions.



Features

Model No.	SZ 4363.000
Product description	Utilized to support heavy components (transformers, motors, drives, pumps) that are mounted within the enclosure. T-head screw and slot in the support rail accommodate a wide range of mounting dimensions.
Material	Carbon steel
Surface finish	Zinc-plated
Supply includes	2 system support rails (45 x 25 mm) 4 T-head screws M12 x 60 mm Fasteners
Installation options	On the vertical TS enclosure section via snap-on nuts 8800.806 or via adapter rail for VX compatibility, offset in the height, via TS punched rail 25 x 38 mm On the horizontal VX SE enclosure section in the width at the bottom and top, or in the depth at the bottom and top (without mounting plate) using snap-on nut 8800.808 On the horizontal TS enclosure section: in the width, in the depth (without mounting plate) On base configuration rail for TP
Suitable for	Enclosure type: TS Width: = 1,200 mm
Packaging unit	2 pc(s).

Features

Weight/packaging unit	5.7 kg
Net weight	5.416
Gross weight	6.2
Customs tariff number	73269098
EAN	4028177099715
ETIM 8	EC001285
ETIM 7.0	EC001285
ECLASS 8.0	27189261