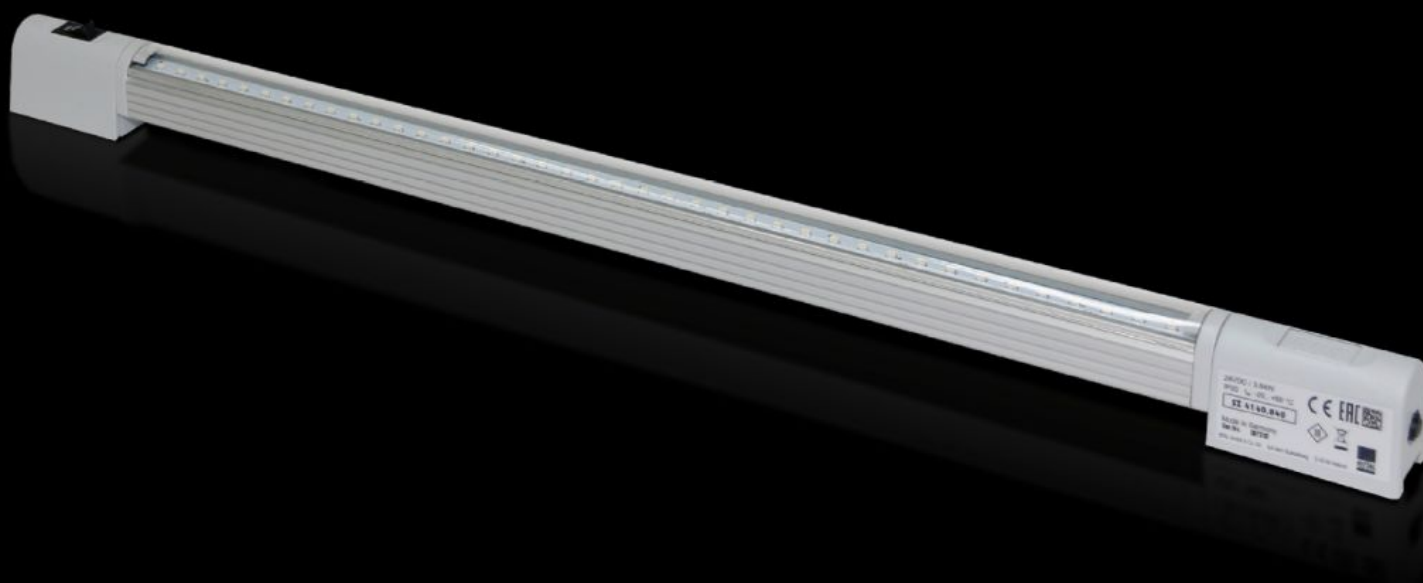
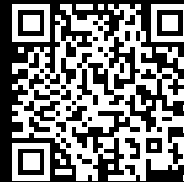


# Rittal – The System.

Faster – better – everywhere.



## SZ 4140.840 LED compact system light

State: 2025-04-26 (Source: [rittal.com/ca-en](https://www.rittal.com/ca-en))

ENCLOSURES

POWER DISTRIBUTION

CLIMATE CONTROL

IT INFRASTRUCTURE

SOFTWARE & SERVICES

FRIEDHELM LOH GROUP



# SZ 4140.840 - LED compact system light

Supply voltage: 24 V DC



## Features

Model No.	SZ 4140.840
Benefits	Max. EMC capacity. Protected with the safety extra-low voltage range Economical energy use. Low-maintenance with the use of LEDs. May be connected to a door-operated switch.
Function principle	Integral through-wiring. Universal attachment options. Vertically hinged light cone.
Material	Light body: Extruded aluminum Light cover: Polycarbonate (halogen-free) Light ends: PC-ABS
Color	Similar to RAL 7035
Supply includes	LED compact system light Light (bulb) Light cover Assembly components
Mounting distance screws	550 mm

# Features

Connection options	Power supply through connector Door-operated switch Through-wiring (configuration of row of luminaires)
Light (bulb)	LEDs, cool white
Protection category	III (SELV)
Switch (type)	Integrated on/off/door-operated switch mode
Light cover	Yes
Light – installation type	Screw fastening Clip fastening Magnetic fastener (accessories)
Rated impulse withstand voltage, phase to earth	Depending on the power supply
Rated impulse withstand voltage, phase to phase	Depending on the power supply
Rated insulation voltage	Depending on the power supply
Rated current max DC note	The maximum rated current when installing luminaires is 2 A
with DC	0.16 A
Number of LEDs	40
Mounting distance clip/magnet	475 mm
Installation options	Directly onto the enclosure section with 25 mm pitch pattern About magnet fastening kit AE: with rail for interior installation
Note	Only intended for use in enclosures and closed housings When using on customer-supplied power packs, it is important to obtain the requisite approvals depending on the application The maximum rated current when installing luminaires is 2 A
Light cone adjustment	Yes
Dimensions	Width: 530 mm Height: 32.8 mm Depth: 20.64 mm
Rated operating voltage	24 V (DC)

# Features

Protection category IP to IEC 60529	IP 20
Packaging unit	1 pc(s).
Net weight	0.43
Gross weight	0.434
Customs tariff number	94054990
EAN	4028177630154
E-Number Sweden	E4302508
ETIM 9	EC000321
ETIM 8	EC000321
ECLASS 8.0	27189241

# Approvals

Explanations	Declaration of conformity Declaration of conformity UK
--------------	---