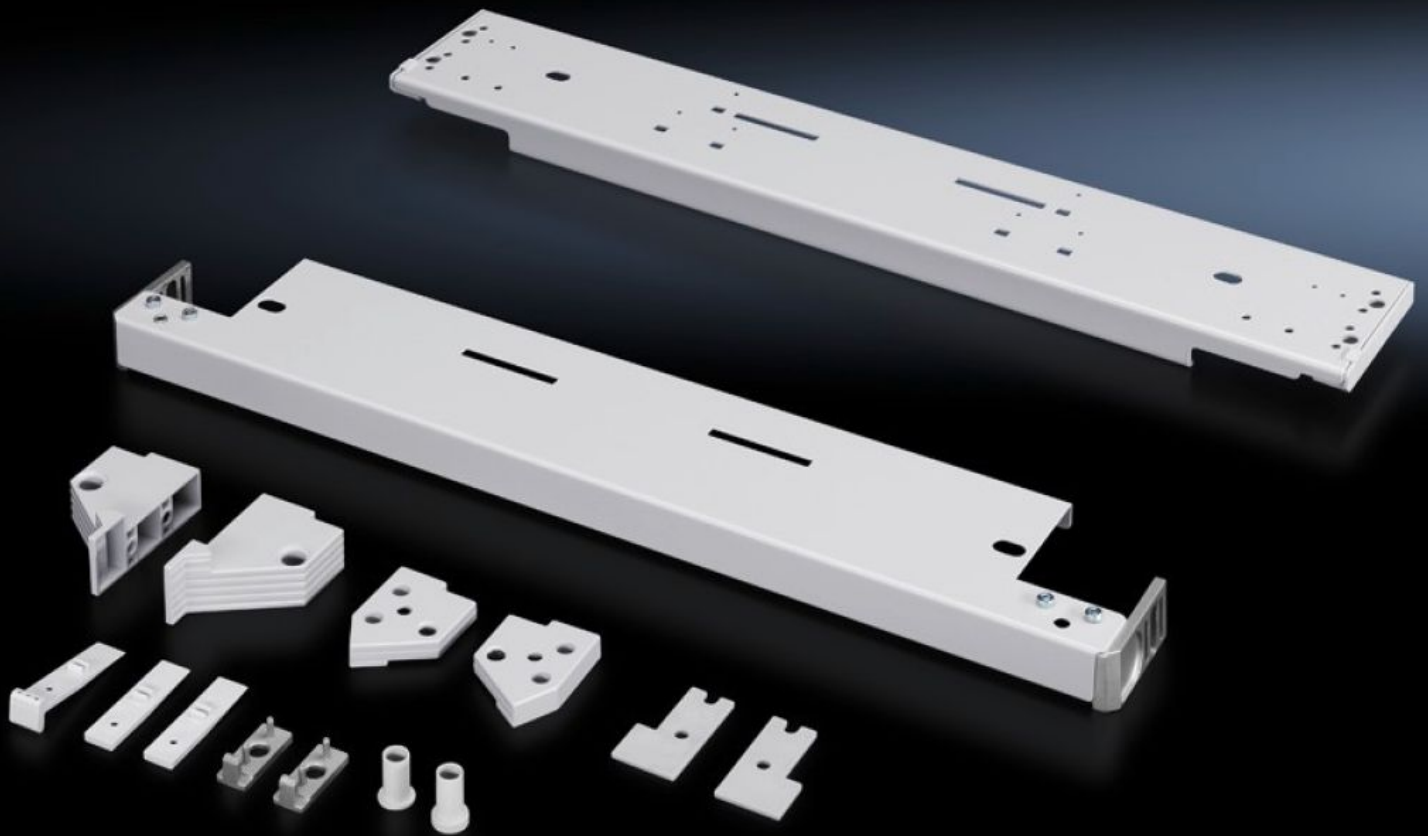


Rittal – The System.

Faster – better – everywhere.



SR 1997.835 Installation kit

State: 2024-10-19 (Source: [rittal.com/ca-en](https://www.rittal.com/ca-en))

ENCLOSURES

POWER DISTRIBUTION

CLIMATE CONTROL

IT INFRASTRUCTURE

SOFTWARE & SERVICES

FRIEDHELM LOH GROUP



SR 1997.835 - Installation kit for pivoting frame, large, with trim panel

Features

Model No.	SR 1997.835
Material	Carbon steel
Color	RAL 7035
Supply includes	Assembly components for mounting on the enclosure
Opening angle	180°
Installation options	On pivoting frame with 19" level, side On pivoting frame with 19" level, center
Load capacity, static	1,200 N
Note to permissible static load max.	Installation only possible with the mounting plate slide rail dismantled.
Suitable for	Enclosure type: TS SE Width: = 800 mm
Suitable for enclosure type	TS SE
Packaging unit	1 pc(s).
Weight/packaging unit	6.25 kg
Net weight	5.855
Gross weight	6.32
Customs tariff number	83024900
EAN	4028177343542
ETIM 8	EC002625
ETIM 7.0	EC002625
ECLASS 8.0	27189234