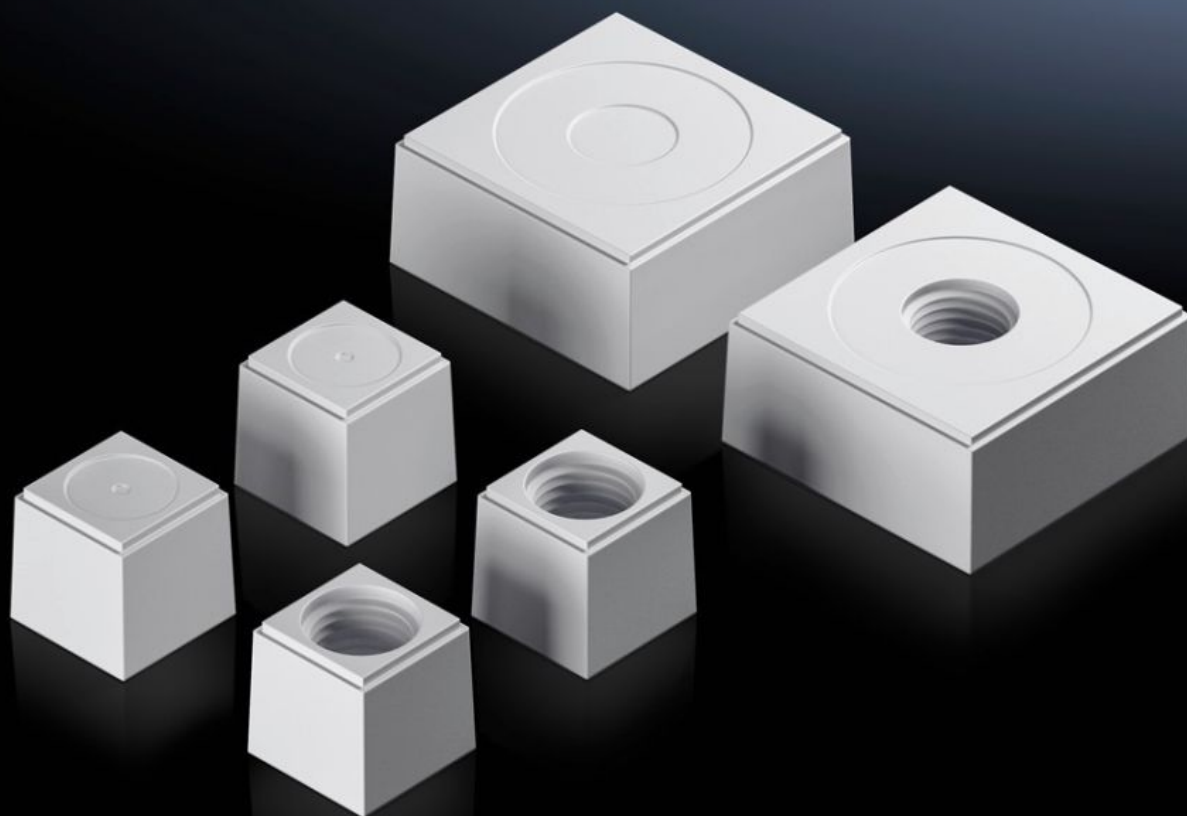
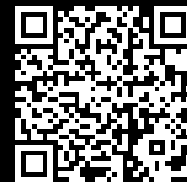


# Rittal – The System.

Faster – better – everywhere.



## AX 2580.123 Seal insert

State: 04.04.2025 (Source: [rittal.com/bg-bg](http://rittal.com/bg-bg))

ENCLOSURES

POWER DISTRIBUTION

CLIMATE CONTROL

IT INFRASTRUCTURE

SOFTWARE & SERVICES

FRIEDHELM LOH GROUP



# AX 2580.123 - Seal insert For plastic gland plate, modular and sealing frame, modular

The slotted seal inserts, in conjunction with the inlays, allow individual cable entry, even with preassembled cables.

## Features

Model No.	AX 2580.123
Design	Seal insert, large
Product description	The slotted seal inserts, in conjunction with the inlays, allow individual cable entry, even with preassembled cables.
Material	Plastic
Colour	RAL 7035
Type rating to UL 50E	Type 1 Type 12 Type 4X indoor use only
For cable diameter	23 mm
Packs of	5 pc(s).
Net weight	0.12
Gross weight	0.134
Customs tariff number	40082900
EAN	4028177939837
ETIM 9	EC000441
ETIM 8	EC000441
ECLASS 8.0	27149109

## Approvals

# Approvals

---

Approvals

UR + C-UR (recognized)