

Rittal – The System.

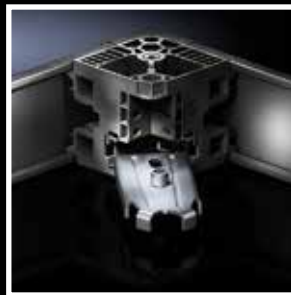
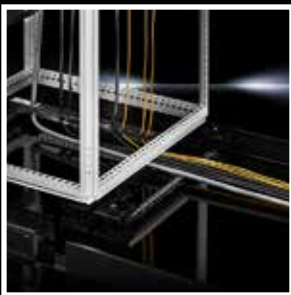
Faster – better – worldwide.

Flex-Block

The new Flex-Block plinth/base assembly is designed specifically for Rittal's lineup of free-standing enclosures, including its TS IT, TS8, SE8, CM, TP and PC units as well as the latest generation of liquid cooling packages. The new base/plinth system comprises four symmetrical corner modules and covers made of plastic, plus sheet steel side trim panels. The modular design and increased assembly space allow the four corner pieces, which support the entire weight of the enclosure, to be quickly and easily fitted underneath the enclosure right from the start. The 4-inch (100 mm) high plastic corner modules are designed for loads of more than 3,100 pounds. There's a space-saving cable routing design in the base/plinth that leaves more space for interior installation of the enclosure. When configured with a punched rail, cable management pieces can be clipped into position from outside or inside.



- Fast, tool-free assembly – can be completed in as few as 30 seconds
- Quick, convenient transportation of enclosures
- Rails can be clipped into place
- Units can be bayed with a simple clip application
- Flex-Block may be retrofit to existing installations
- Flexible installation options for cable management
- A load capacity of more than 3,100 pounds
- UV resistant and UL flame rated material



ENCLOSURES

POWER DISTRIBUTION

CLIMATE CONTROL

IT INFRASTRUCTURE

SOFTWARE & SERVICES



Note: Imperial measurements are approximate, metric measurements are exact.

Base, closed

W x D Dimensions inches (mm)	Height 4" (100 mm)			Height 8" (200 mm)		
	Part No.			Part No.		
	Side ¹⁾	Front/Rear ¹⁾	Corner Pieces ²⁾	Side ¹⁾	Front/Rear ¹⁾	Corner Pieces ²⁾
16 x 20 (400 x 500)	8100.500	8100.400	8100.000	8200.500	8200.400	8200.000
16 x 24 (400 x 600)	8100.600			8200.600		
24 x 20 (600 x 500)	8100.500	8100.600		8200.500	8200.600	
24 x 24 (600 x 600)	8100.600			8200.600		
24 x 32 (600 x 800)	8100.800			8200.800		
32 x 16 (800 x 400)	8100.400	8100.800		8200.400	8200.800	
32 x 20 (800 x 500)	8100.500			8200.500		
32 x 32 (800 x 800)	8100.800			8200.800		
32 x 39 (800 x 1000)	8100.010	8100.010		8200.010	8200.010	
39 x 12 (1000 x 300)	8100.300			8200.300		
39 x 24 (1000 x 400)	8100.400			8200.400		
39 x 20 (1000 x 500)	8100.500	8100.120		8200.500	8200.120	
39 x 24 (1000 x 600)	8100.600			8200.600		
47 x 12 (1200 x 300)	8100.300			8200.300		
47 x 16 (1200 x 400)	8100.400	8100.160		8200.400	2 x 8100.160	
47 x 20 (1200 x 500)	8100.500			8200.500		
47 x 24 (1200 x 600)	8100.600			8200.600		
47 x 32 (1200 x 800)	8100.800	8100.180		8200.800	2 x 8100.180	
63 x 16 (1600 x 400)	8100.400			8200.400		
71 x 20 (1800 x 500)	8100.500	8100.180		8200.500	2 x 8100.180	

¹⁾PU = 2 ²⁾PU = 4

Base, vented

W x D Dimensions inches (mm)	Height 4" (100 mm)			
	Part No.			
	Side ¹⁾	Front/Rear ¹⁾	Corner Pieces ²⁾	Vent Filter Mat ²⁾
24 x 24 (600 x 600)	8100.600	8100.602	8100.000	7583.500
24 x 32 (600 x 800)	8100.800			
24 x 39 (600 x 1000)	8100.010			
24 x 47 (600 x 1200)	8100.120			
32 x 24 (800 x 600)	8100.600	8100.802		
32 x 32 (800 x 800)	8100.800			
32 x 39 (800 x 1000)	8100.010			
32 x 47 (800 x 1200)	8100.120			

¹⁾PU = 2 ²⁾PU = 4

Additional Accessories

Description	Length	For width/depth inches (mm)	Packs of	Part No.
Punched rail, 23 x 23 mm, for the installation of cable clamp rails	10 (245)	16 (400)	12	4169.500
	14 (345)	20 (500)	12	4170.500
	18 (445)	24 (600)	12	4171.500
	25 (645)	32 (800)	12	4172.500
Baying clip for baying the Flex-Block corner pieces	-	-	12	8000.100
Adaptor sleeve for levelling feet (4612.000) and twin castors (7495.000, 6184.000)	-	-	12	8000.500

Rittal Corporation

Urbana, Ohio • Schaumburg, Illinois • Houston, Texas • Sparks, Nevada • USA
Toll-free: 800-477-4000 • Fax: 800-477-4003 • Email: rittal@rittal.us • Online: www.rittal.us