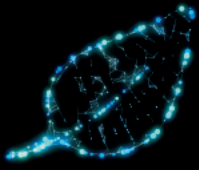


**Rittal – The System.**

Faster – better – everywhere.



# Sustainability that works

Minimising CO<sub>2</sub> emissions – the Blue e+ way



ENCLOSURES

POWER DISTRIBUTION

CLIMATE CONTROL

IT INFRASTRUCTURE

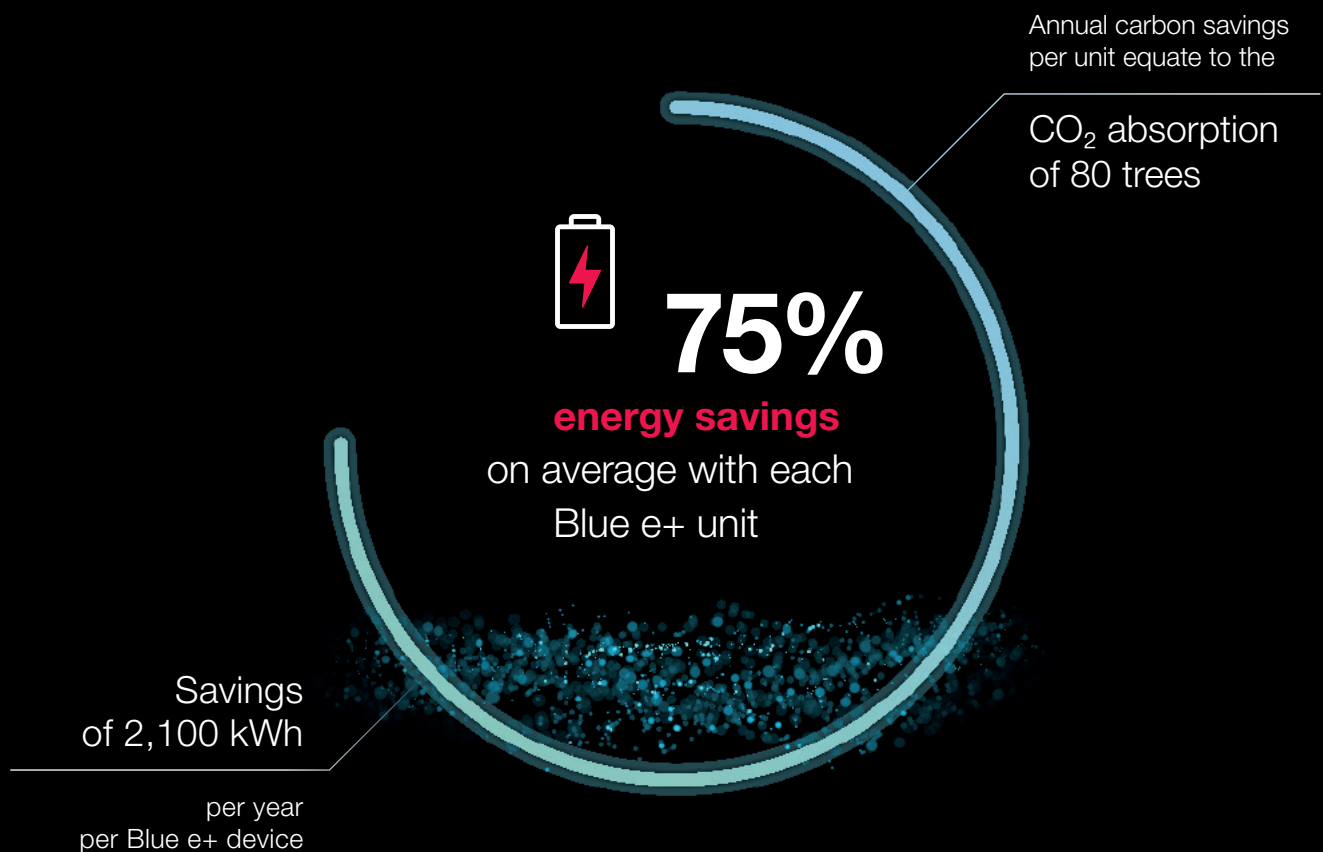
SOFTWARE & SERVICES



FRIEDHELM LOH GROUP

# Sustainability is our priority. Yours too?

---



In 2015, Rittal launched the world's most efficient range of enclosure cooling units: Blue e+. Since then, it has been continuously refined and upgraded. Average energy savings compared with conventional cooling units are in the region of 75%, which translates into a significantly reduced carbon footprint.

Alongside digitalisation, sustainability is high on the global agenda. Companies need to find solutions that really work, in order to reconcile political requirements and objectives with rising electricity prices as well as our growing energy needs.

Increasingly, customers are making purchase decision based on a company's sustainability credentials.

Now is the time to take action. We're ready. Are you?

# Sustainability that works.

## Blue e+ technology

---

What's more, Blue e+ boasts one-of-a-kind technology, an extended service life for installed components thanks to reduced temperature fluctuations, as well as global usability and integration into the IoT. Its revolutionary energy efficiency is achieved with ingenious hybrid technology, featuring two parallel cooling circuits that can operate independently or in tandem, depending on the temperature difference.

The uniqueness of the Blue e+ technology uses the symbiotic power of passive and active cooling circuits. Two circuits operating in perfect harmony and adapting to the ambient conditions for maximum efficiency.

**Further information  
can be found at:**

[www.rittal.com/CO2Footprint](http://www.rittal.com/CO2Footprint)

Passive cooling circuit:  
The heat pipe dissipates heat from the enclosure as soon as the ambient temperature drops below the setpoint



Active cooling circuit:  
Speed-controlled components for demand-based cooling

### Your benefits:



- Greater efficiency: Average energy savings of 75% per Blue e+ unit
- More flexibility: For any application, location or output range
- Enhanced reliability: Maximum reliability, less maintenance-intensive and ready to use at short notice
- Added simplicity: Effortless planning, operation and installation

# New: Blue e+ S: Sustainability for outputs of up to 1,000 W



The new Blue e+ S cooling units: Now even more sustainable power for output categories from 300 – 1,000 W. In a brand new design with smart functions and even faster processes, thanks to the Smart Service concept.



Now more sustainable, thanks to a world-beating energy efficiency rating and minimal Global Warming Potential



Now even better, with digital connection via smart monitoring, IoT interface and our Scan & Service app



Now more versatile, with multi-voltage capability for global use



Now more convenient, with fast, easy maintenance and servicing access



Now faster, with optimised handling and easier assembly



Now more reliable, because changes to the system status are indicated by LED optical fibres

**Further information  
can be found at:**


[www.rittal.com/blue\\_e\\_plus\\_s](http://www.rittal.com/blue_e_plus_s)



# Blue e+: Sustainable technology for all applications

A cooling unit that's at home in any environment. Blue e+ units are ideal for all industries and environments. Choose from a range of efficient solutions covering all requirements and applications:

- A wide output range covering all cooling requirements from 0.3 – 5.8 kW
- Sheet steel version for all typical industry applications
- Stainless steel & chemical versions for challenging ambient conditions
- Robust outdoor version with anti-vandalism features
- International approvals and multi-voltage capability for worldwide use
- Maritime versions for applications that can move e.g. on board ships

**1t**  **CO<sub>2</sub>**  
**savings**  
per unit/year –  
the amount of **CO<sub>2</sub>**  
absorbed by a beech  
tree in **80 years**



# Services and digital tools for greater efficiency

## Further information can be found at:

[www.rittal.com/Efficiency-analyses](http://www.rittal.com/Efficiency-analyses)

Rittal's efficiency and service check can speed up your path to carbon-neutral production!

Rittal can help you convert your production to cooling units based on Blue e+ technology. Get a bespoke efficiency and service audit of your installed enclosure cooling units.



## Efficiency and service check:

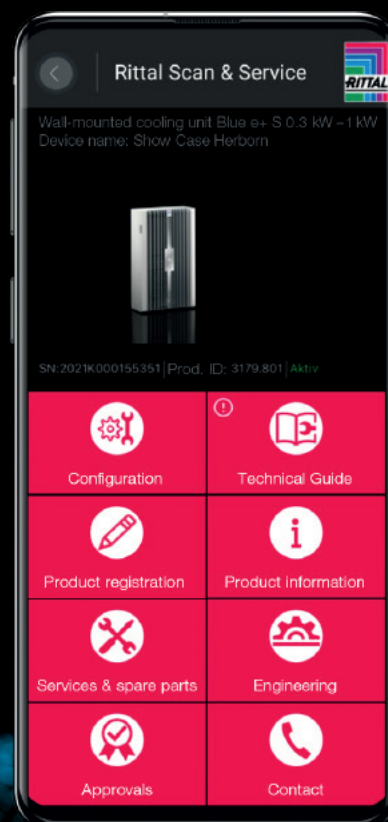


- Review of the current performance levels of your units
- Energy-saving ideas for energy audits to DIN EN 16247-1
- Recommendations for reducing unscheduled production stoppages, down-time and the associated costs
- Advice on government subsidies and potential tax savings
- Identification of potential savings, improvements and upgrades

## Digital tools and data: Rittal Scan & Service app

Direct access to all cooling unit information, simple operation of the equipment and efficient communication in the event of any faults.

## Available from the App Store and Google Play



| Model No.   | Total cooling output<br>L35 L35 | Rated voltage,<br>50/60 Hz         | Dimensions [mm] |        |       | Installation type |                           |                        |
|---|---------------------------------|------------------------------------|-----------------|--------|-------|-------------------|---------------------------|------------------------|
|   |                                 |                                    | Width           | Height | Depth | External mounting | Partial internal mounting | Full internal mounting |
| <b>Blue e+ S, sheet steel*</b>                              |                                 |                                    |                 |        |       |                   |                           |                        |
| 3178.800  | 300 W                           | 110 - 240 V, 1~                    | 300             | 570    | 159   | ■                 |                           | ■                      |
| 3178.801  | 300 W                           | 110 - 240 V, 1~                    | 300             | 570    | 159   | ■                 |                           | ■                      |
| 3179.800  | 520 W                           | 110 - 240 V, 1~                    | 300             | 570    | 199   | ■                 |                           | ■                      |
| 3179.801  | 520 W                           | 110 - 240 V, 1~                    | 300             | 570    | 199   | ■                 |                           | ■                      |
| 3180.800  | 780 W                           | 110 - 240 V, 1~                    | 300             | 570    | 250   | ■                 |                           | ■                      |
| 3184.800  | 1,000 W                         | 110 - 240 V, 1~                    | 400             | 950    | 196   | ■                 |                           | ■                      |
| 3184.840  | 1,000 W                         | 380 - 480 V, 2~                    | 400             | 950    | 196   | ■                 |                           | ■                      |
| <b>Blue e+, sheet steel*</b>                                |                                 |                                    |                 |        |       |                   |                           |                        |
| 3185.830  | 1,600 W                         | 110 - 240 V, 1~<br>380 - 480 V, 3~ | 400             | 950    | 310   | ■                 | ■                         | ■                      |
| 3186.930  | 2,000 W                         | 110 - 240 V, 1~<br>380 - 480 V, 3~ | 450             | 1600   | 294   | ■                 | ■                         | ■                      |
| 3187.930  | 2,600 W                         | 110 - 240 V, 1~<br>380 - 480 V, 3~ | 450             | 1600   | 294   | ■                 | ■                         | ■                      |
| 3188.940  | 4,200 W                         | 380 - 480 V, 3~                    | 450             | 1600   | 393   | ■                 | ■                         |                        |
| 3189.940  | 5,800 W                         | 380 - 480 V, 3~                    | 450             | 1600   | 393   | ■                 | ■                         |                        |
| <b>Blue e+ for maritime and other dynamic applications*</b> |                                 |                                    |                 |        |       |                   |                           |                        |
| 3184.837  | 1,000 W                         | 110 - 240 V, 1~<br>380 - 480 V, 3~ | 400             | 950    | 310   | ■                 |                           | ■                      |
| 3185.837  | 1,600 W                         | 110 - 240 V, 1~<br>380 - 480 V, 3~ | 400             | 950    | 310   | ■                 |                           | ■                      |
| 3186.937  | 2,000 W                         | 110 - 240 V, 1~<br>380 - 480 V, 3~ | 450             | 1600   | 294   | ■                 |                           | ■                      |
| 3187.937  | 2,600 W                         | 110 - 240 V, 1~<br>380 - 480 V, 3~ | 450             | 1600   | 294   | ■                 |                           | ■                      |
| <b>Blue e+, stainless steel*</b>                            |                                 |                                    |                 |        |       |                   |                           |                        |
| 3185.530  | 1,600 W                         | 110 - 240 V, 1~<br>380 - 480 V, 3~ | 400             | 950    | 310   | ■                 | ■                         | ■                      |
| 3186.630  | 2,000 W                         | 110 - 240 V, 1~<br>380 - 480 V, 3~ | 450             | 1600   | 294   | ■                 | ■                         | ■                      |
| 3187.630  | 2,600 W                         | 110 - 240 V, 1~<br>380 - 480 V, 3~ | 450             | 1600   | 294   | ■                 | ■                         | ■                      |
| 3188.640  | 4,200 W                         | 380 - 480 V, 3~                    | 450             | 1600   | 393   | ■                 | ■                         |                        |
| 3189.640  | 5,800 W                         | 380 - 480 V, 3~                    | 450             | 1600   | 393   | ■                 | ■                         |                        |
| <b>Blue e+, chemical*</b>                                   |                                 |                                    |                 |        |       |                   |                           |                        |
| 3185.835  | 1,600 W                         | 110 - 240 V, 1~<br>380 - 480 V, 3~ | 400             | 950    | 310   | ■                 | ■                         | ■                      |
| 3186.935  | 2,000 W                         | 110 - 240 V, 1~<br>380 - 480 V, 3~ | 450             | 1600   | 294   | ■                 | ■                         | ■                      |
| 3187.935  | 2,600 W                         | 110 - 240 V, 1~<br>380 - 480 V, 3~ | 450             | 1600   | 294   | ■                 | ■                         | ■                      |
| 3188.945  | 4,200 W                         | 380 - 480 V, 3~                    | 450             | 1600   | 393   | ■                 | ■                         |                        |
| 3189.945  | 5,800 W                         | 380 - 480 V, 3~                    | 450             | 1600   | 393   | ■                 | ■                         |                        |
| <b>Blue e+ outdoor**</b>                                    |                                 |                                    |                 |        |       |                   |                           |                        |
| 3185.330  | 1,500 W                         | 110 - 240 V, 1~<br>380 - 480 V, 3~ | 467             | 1042   | 280   | ■                 | ■                         | ■                      |
| 3186.330  | 2,000 W                         | 110 - 240 V, 1~<br>380 - 480 V, 3~ | 517             | 1692   | 260   | ■                 | ■                         | ■                      |
| 3187.330  | 2,500 W                         | 110 - 240 V, 1~<br>380 - 480 V, 3~ | 517             | 1692   | 260   | ■                 | ■                         | ■                      |
| 3188.340  | 3,800 W                         | 380 - 480 V, 3~                    | 517             | 1692   | 360   | ■                 | ■                         | ■                      |
| 3189.340  | 5,000 W                         | 380 - 480 V, 3~                    | 517             | 1692   | 360   | ■                 | ■                         | ■                      |
| <b>Blue e+, roof-mounted***</b>                             |                                 |                                    |                 |        |       |                   |                           |                        |
| 3185.730  | 1,300 W                         | 110 - 240 V, 1~<br>380 - 480 V, 3~ | 700             | 308    | 560   | ■                 |                           |                        |

\* Operating temperature range: -20 °C to +60 °C | IP protection category and UL Type: IP55, UL Type 12 and 3R | Integrated condensate evaporation except for 3178.801 and 3179.801

\*\* Operating temperature range: -30 °C to +60 °C | IP protection category and UL Type: IP56, UL Type 12, 3R and 4 | Integrated condensate evaporation

\*\*\* Operating temperature range: -20 °C to +55 °C | IP protection category and UL Type: IP54, UL Type 12 | Condensate evaporation optionally available as an accessory

Technical specifications: [www.rittal.com/wallmounting](http://www.rittal.com/wallmounting) | Design software: [www.rittal.com/ritherm](http://www.rittal.com/ritherm) | Configuration: [www.rittal.com/configurators](http://www.rittal.com/configurators)

# Rittal – The System.

Faster – better – everywhere.

- Enclosures
- Power Distribution
- Climate Control
- IT Infrastructure
- Software & Services

You can find the contact details of all Rittal companies throughout the world here.



[www.rittal.com/contact](http://www.rittal.com/contact)

X1WW00246EN2305

ENCLOSURES

POWER DISTRIBUTION

CLIMATE CONTROL

IT INFRASTRUCTURE

SOFTWARE & SERVICES



FRIEDHELM LOH GROUP