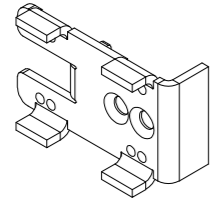


1x

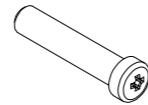


2x



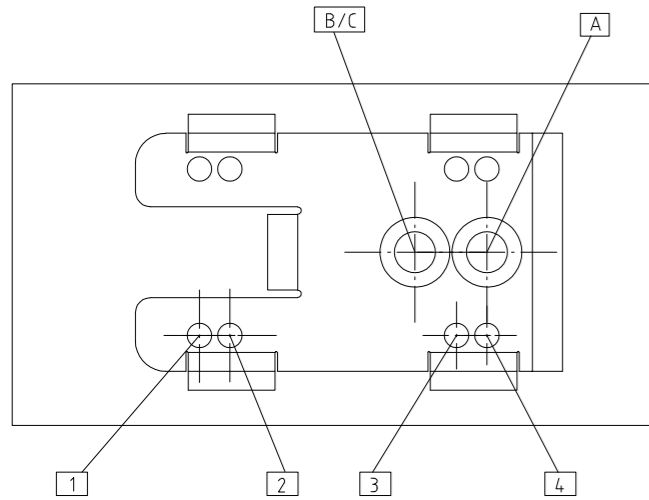
4,3

2x



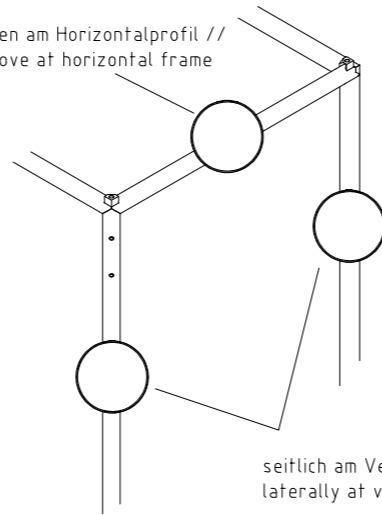
M4x28

No.:



Schalterposition im Schrank //
position of switch in enclosure

oben am Horizontalprofil //
above at horizontal frame



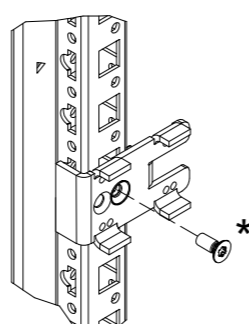
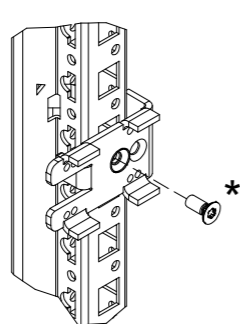
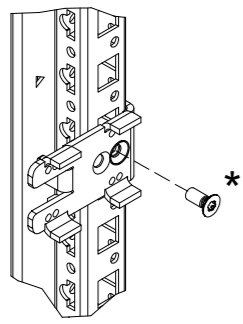
seitlich am Vertikalprofil //
laterally at vertical frame

mögl. Einbaulagen // possible mounting positions

Pos. A

Pos. B

Pos. C

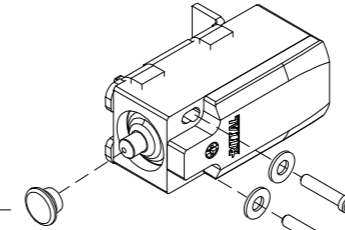


$M_A = 4 \text{ Nm}$

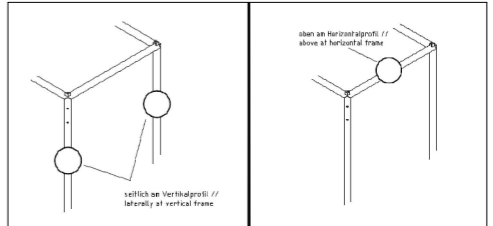
* M5x12 aus VE des Türpositionsschalters // M5x12 included in EA of door-operated switch

Montage Schalter auf Halteplatte //
mounting of switch on mounting plate

Top cover:
aus VE des
Türpositionsschalters;
siehe Tabelle // included
in EA of door-operated
switch; see table



$M_A = \text{max. 1Nm}$



| | | Pos. | No. | top cover | Pos. | No. | top cover |
|--|--|------|-----|-----------|------|-----|-----------|
| VX IT Aluminium Fronttür // VX IT aluminium front door | | B | 2 | Nein / No | A | 1 | Ja/Yes |
| VX IT geteilte Rücktür // VX IT divided back door | | X | | | B | 2 | Nein / No |
| VX25 Stahlblechtür // VX25 door sheet steel | | C | 3 | Nein / No | C | 3 | Ja / Yes |
| VX IT Stahlblechtür mit Sichtscheibe // VX IT door sheet steel with viewing glass | | C | 3 | Ja / Yes | C | 3 | Ja / Yes |
| VX IT geteilte Stahlblechtür mit Sichtscheibe // VX IT divided door sheet steel with viewing glass | | | | | | | |
| VX IT Stahlblechtür // VX IT door sheet steel | | C | 3 | Nein / No | C | 3 | Ja/Yes |
| VX 25 Aluminium Sichttür // VX 25 aluminium glazed door | | C | 4 | Nein / No | C | 4 | Ja/Yes |
| VX IT einteilige Tür Aluminium Automatic Door Opening (ADO) // VX IT divided door aluminium Automatic Door Opening (ADO) | | B | 2 | Ja / Yes | A | 1 | Nein / No |
| VX IT einteilige Tür Stahl Automatic Door Opening (ADO) // VX IT single door sheet steel Automatic Door Opening (ADO) | | C | 3 | Nein / No | C | 3 | Ja / Yes |
| VX IT geteilte Tür Automatic Door Opening (ADO) // VX IT divided door Automatic Door Opening (ADO) | | B | 2 | Nein / No | B | 2 | Nein / No |